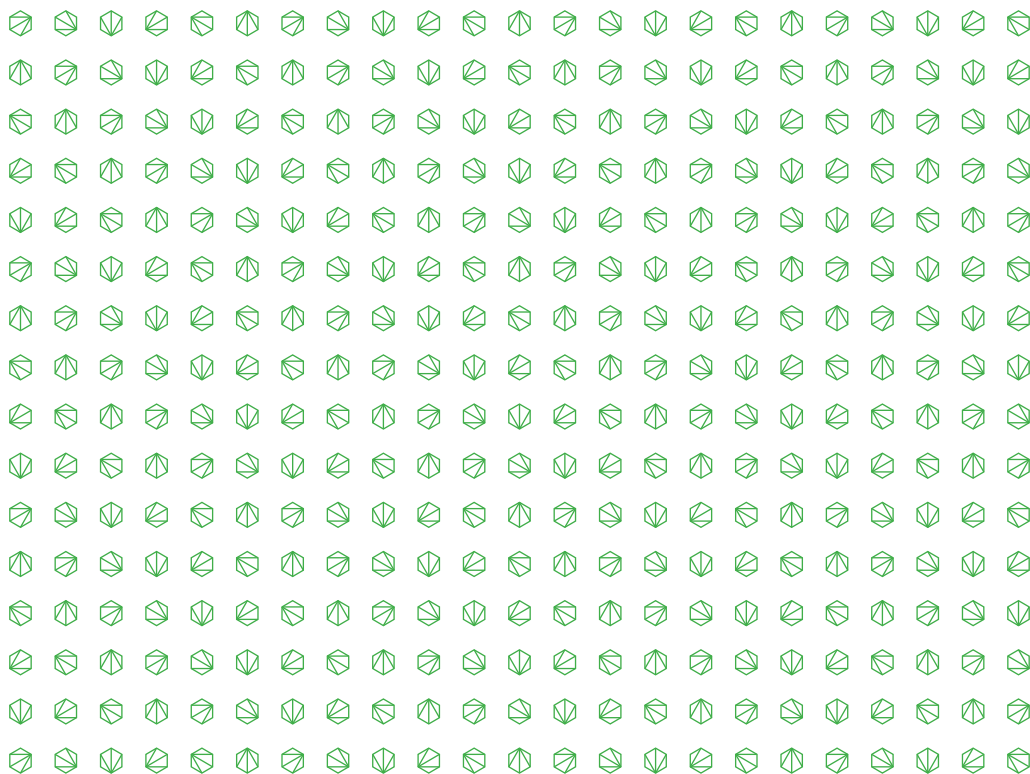


Piet Eckert

E2A



host institution



support

indexnewspaper



sponsors



PANORAM**AH!**®





Piet Eckert

Rita Leite

Nicole Wurzenberger

Etienne Gilly

Petra Simões

Love Di Marco

Wojciech Hryszkiewicz

Taavi Henttonen

Meriem Khaldoun

Arya Arabsbahi

Ivan Franic

Giulia Gorgo

Benjamin Sjöberg

Katarzyna Zaczek

Magdalena Cwik

Elena Guidetti

Szymon Olber

Burak Kalkan

David Wasel

Hazar Çamtepe

Mila Jovic

Grégory dos Santos

2016

www.portoacademy.info

COMBINING SINGULARITIES

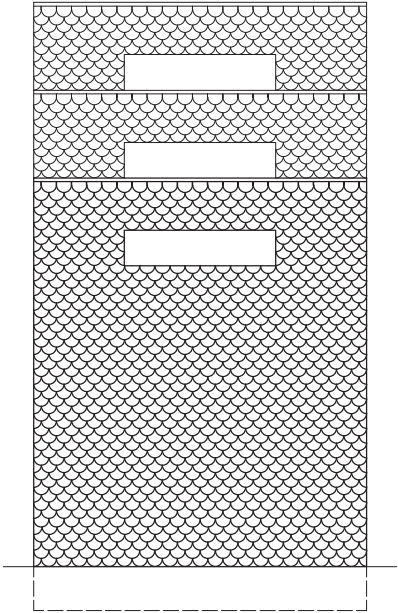
The studio investigates formal and spatial generative specificities of Oporto and engages such discoveries in an interpreted form of architecture. A discovered specificity encounters the normative expression of form; it becomes an ingredient to inform a standard, a building typology, a generic condition. Ingredient and standard generate a hybrid relation. They casually relate to each other and are more than the sum of all its parts. Mix, assembly, arrangement and composition of the known and the discovered obtain a new singularity, in which the parts are recognisable, but no longer restorable.

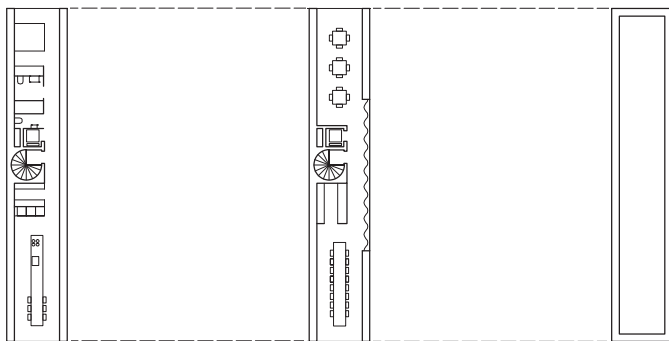
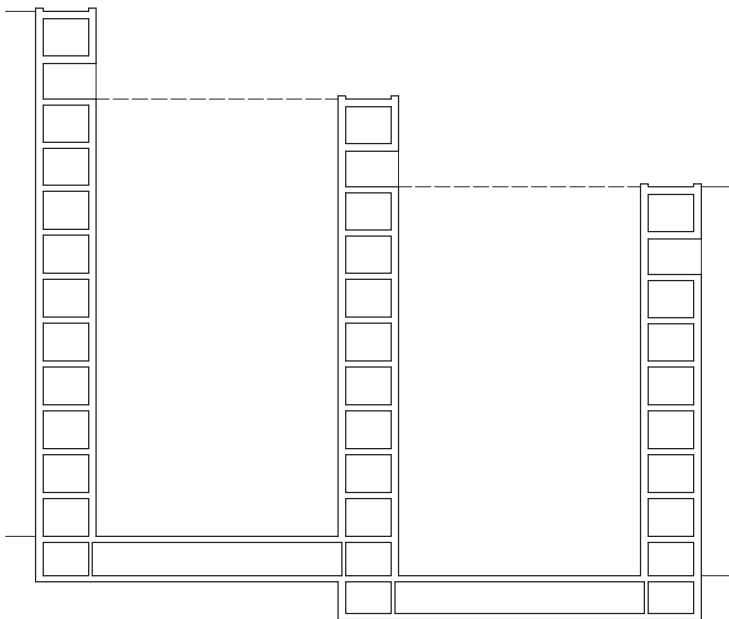
We develop an architectural body that results from a concept of duality. The work reflects the relation and the conditions how former individual singularities become indispensable components.

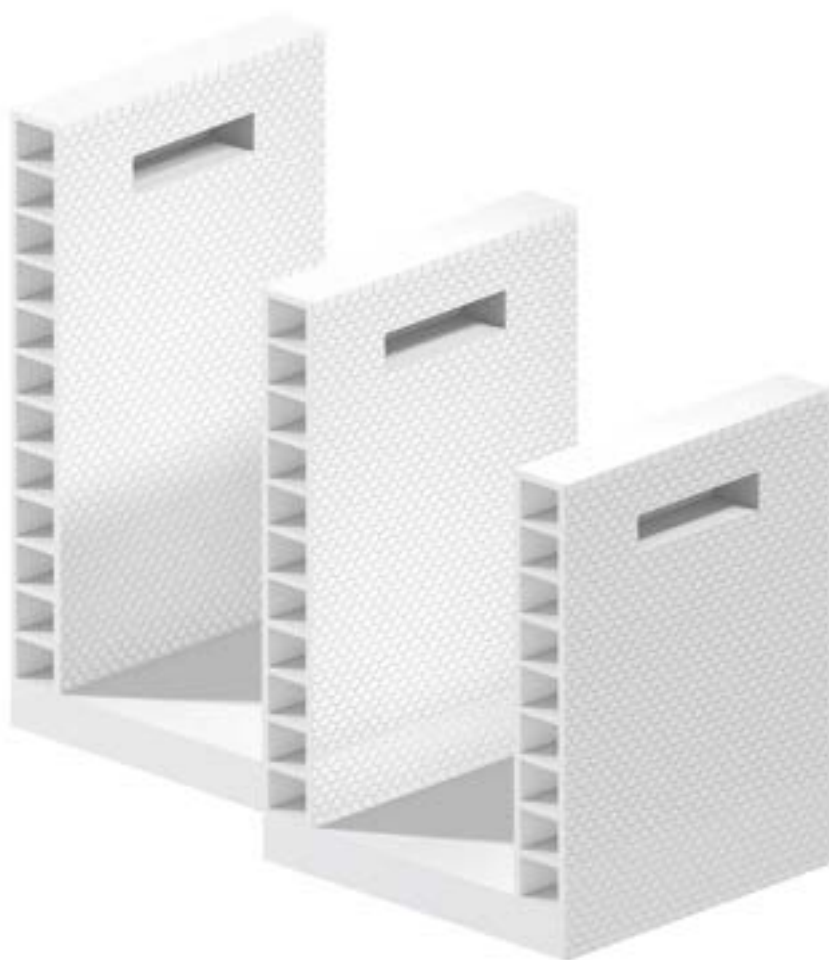


Expectation wall

The expectation wall separates the present from the future; the ancient possibility from an aspiration to come. Its unexpected visibility indicates the urban topography, the terraced and stepped progression of space. The project rediscovers throughout the applied material of concrete canvas and solidifies it into an architecture of the partition.





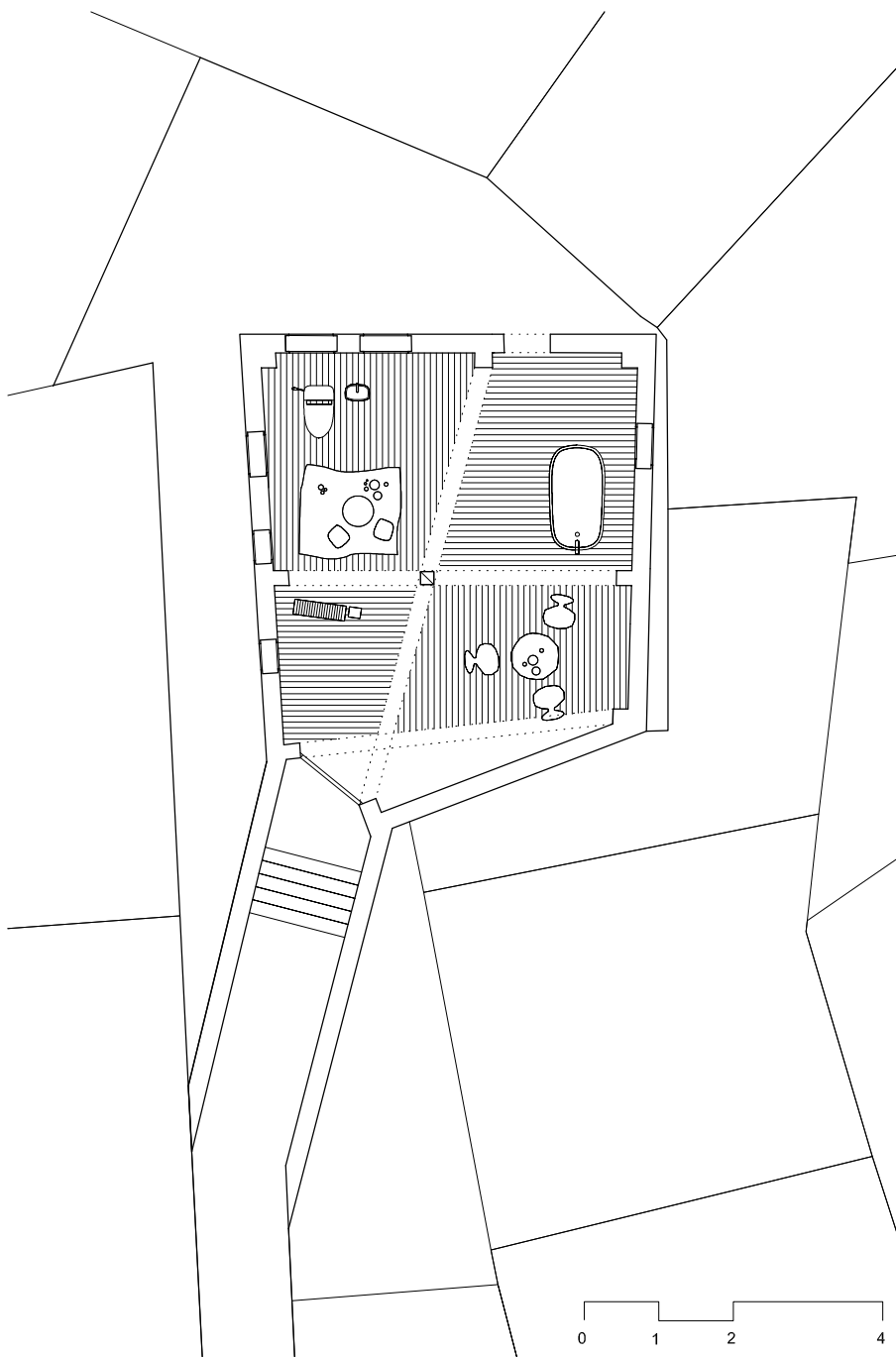


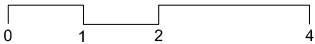
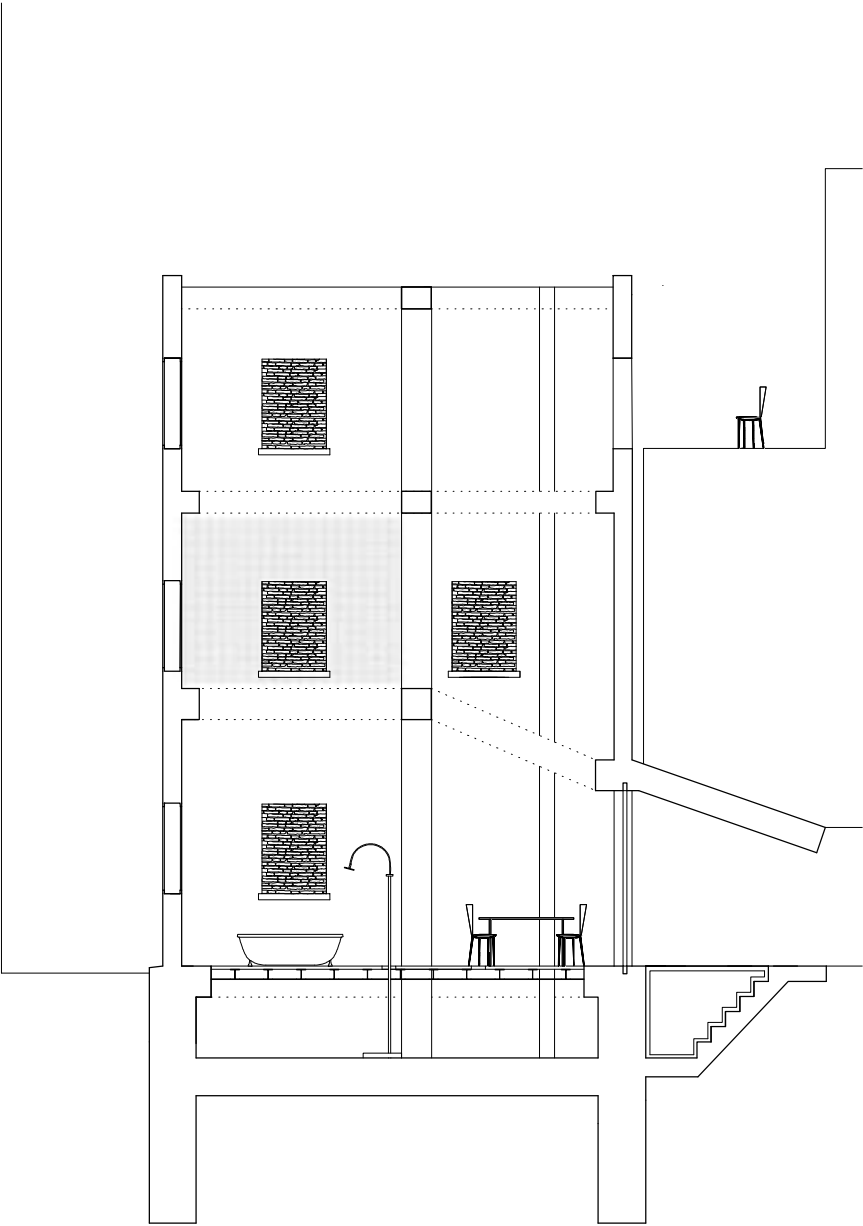


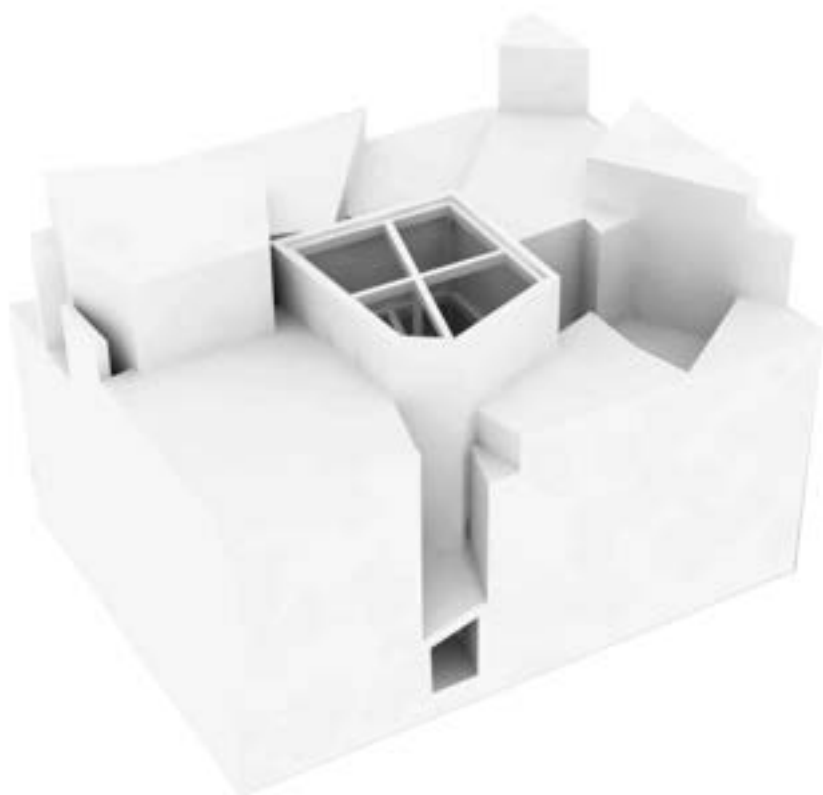
Pause and memory

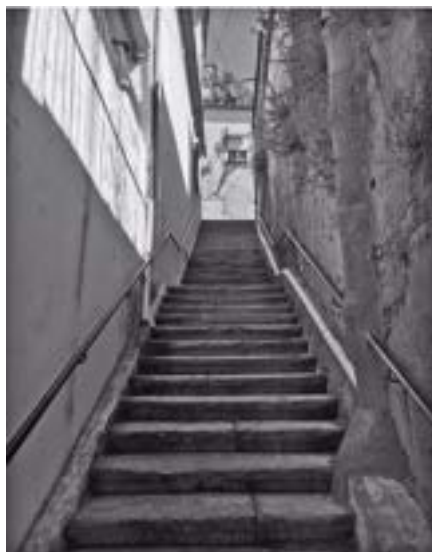
The medieval old town of Oporto is a Unesco World Heritage site. The spatial complexity and the imminent contact of property produce an incredible dense set of obligations. Many redundant and abandoned houses result from this condition of complexity. The project claims an added value by introducing bracing and infill. The new perforation gives access to a pocket garden: a moment of pause and memory.





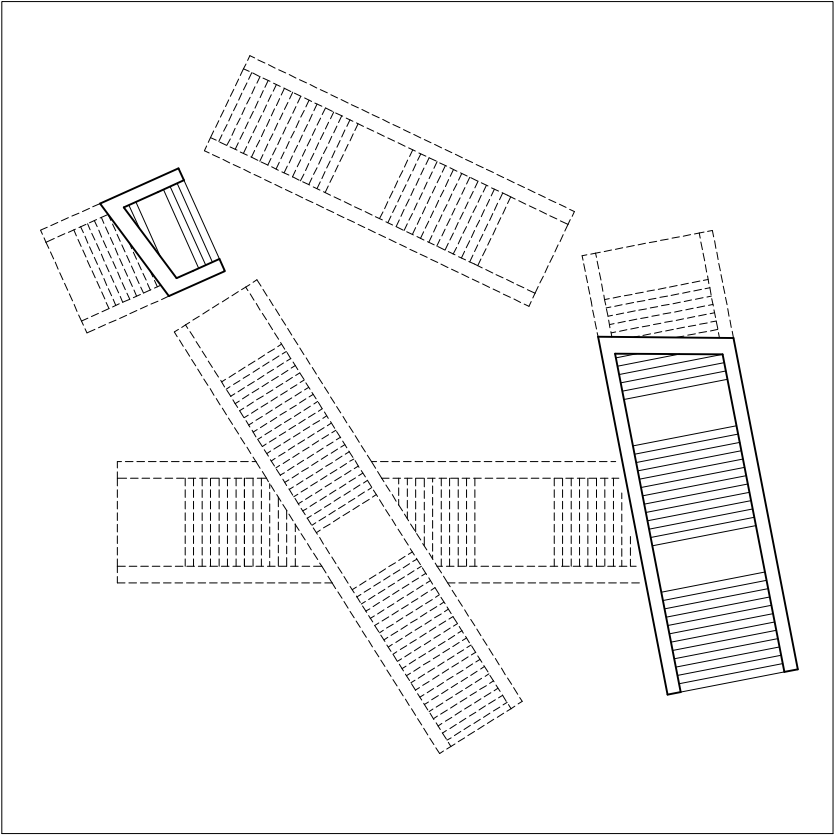


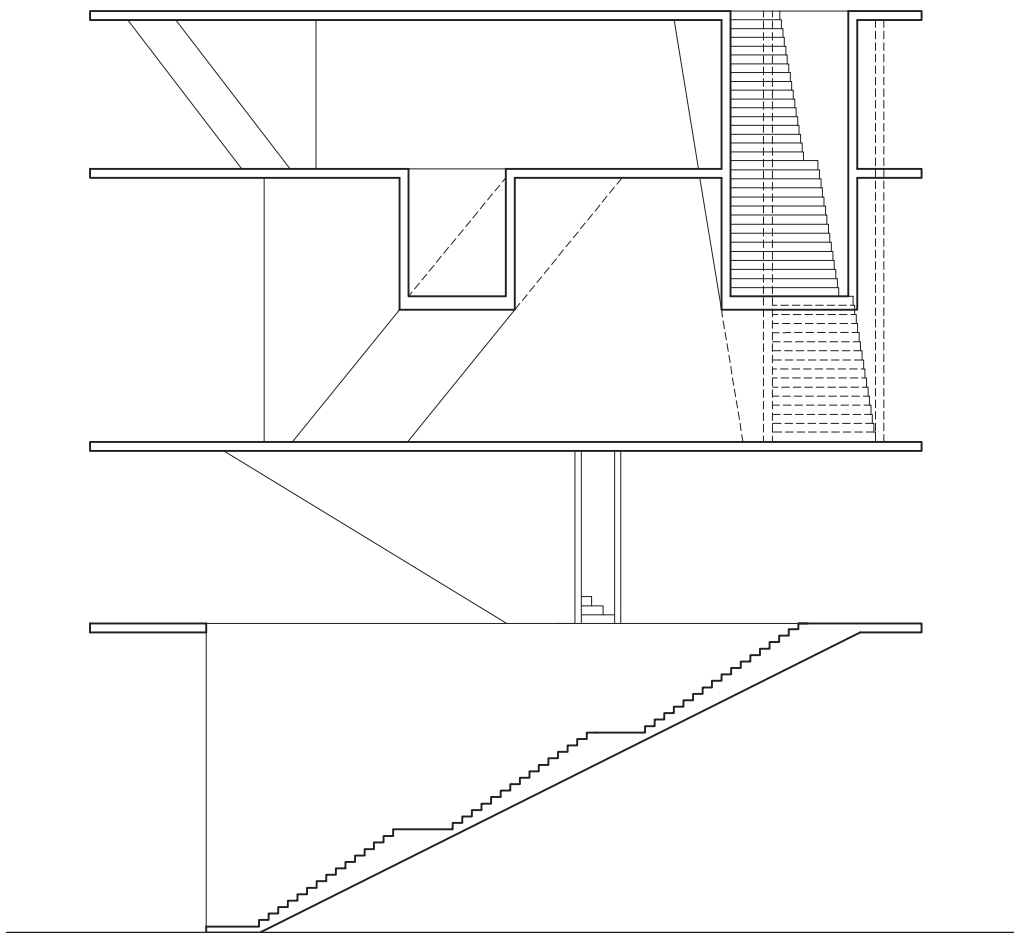


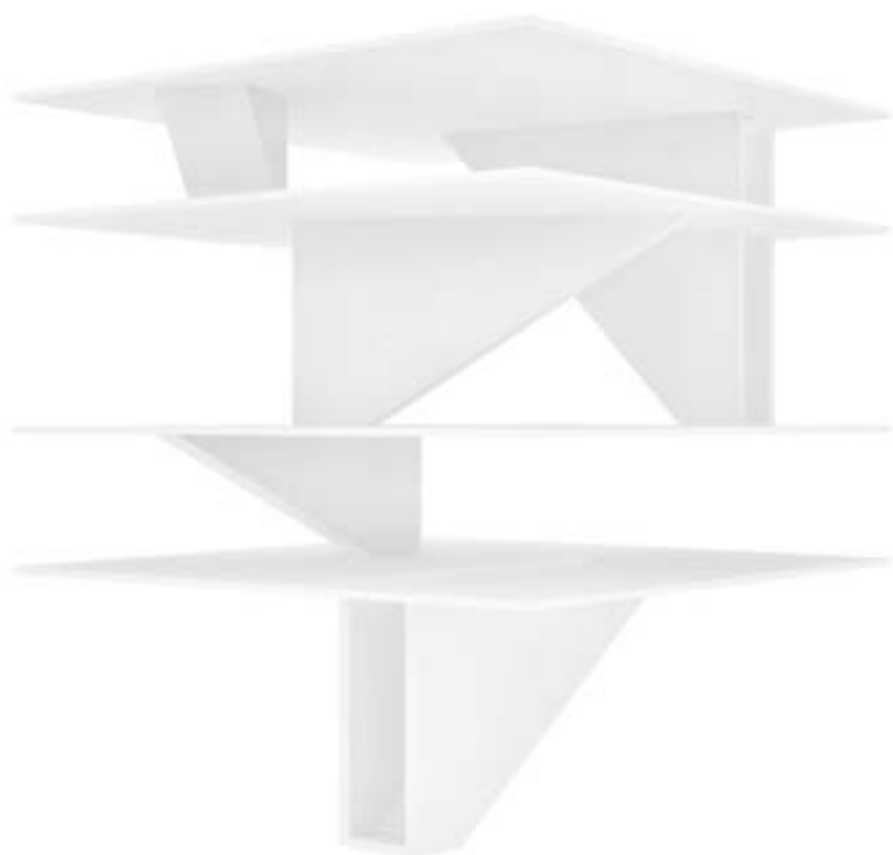


Cascade

The dimensions of space are indicative for a degree of public realm. The long and narrow cascades transgress the deep body of the city. Though being publicly accessible they appear as an intimate, “interior” outdoor spaces. The project develops a cascadian space of interrelations and connections.



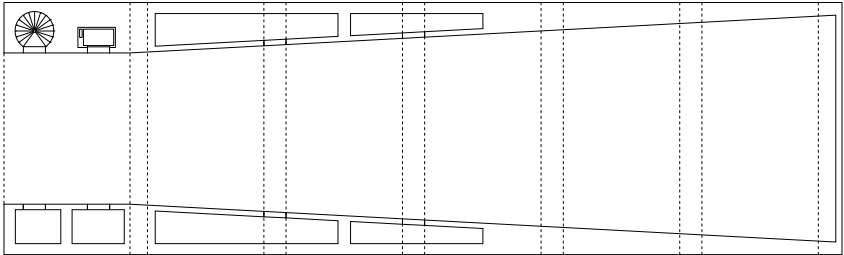


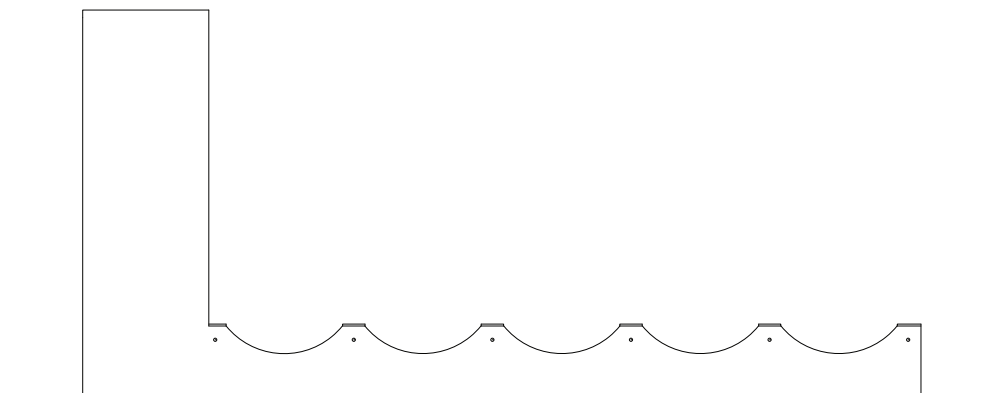
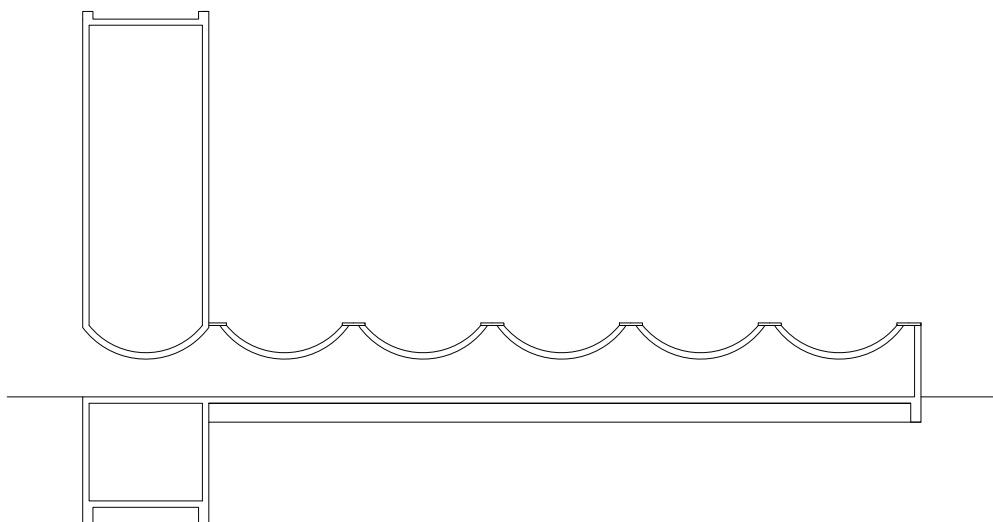


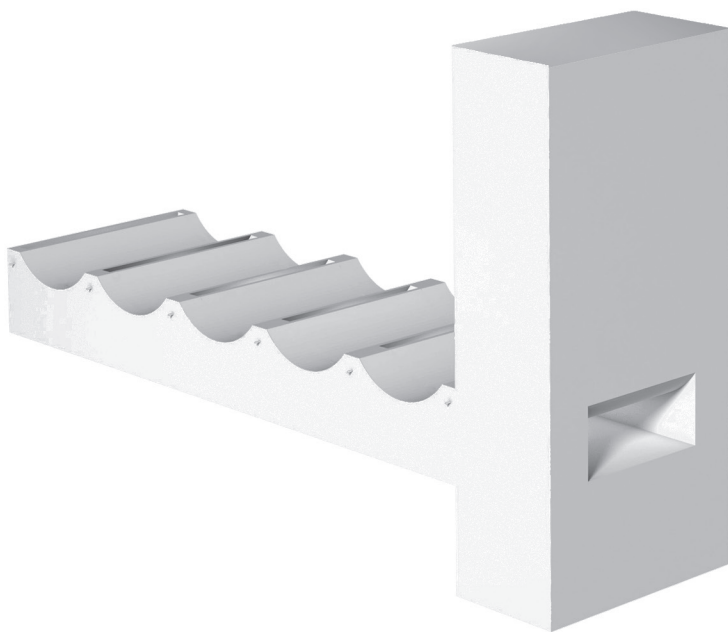


Deep space

The land of Oporto is structured with deep parcels. The horizontal development of space has fundamentally different obligations than the vertically stacked. The depth of space encounters a diverse and complementary program and accomplishes the vertically repeated spaces. In consequence, two different typologies of space meet and unify, therefor form the idea of the typical.





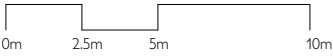
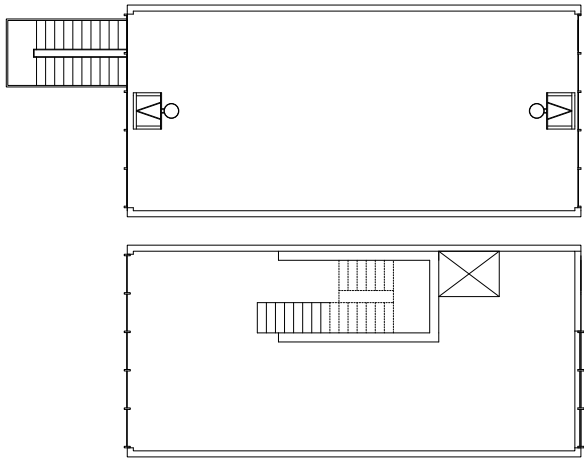


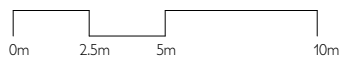
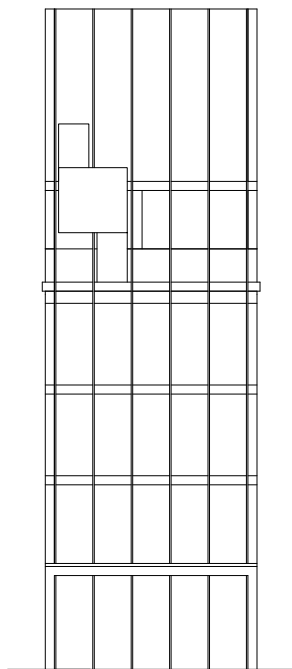
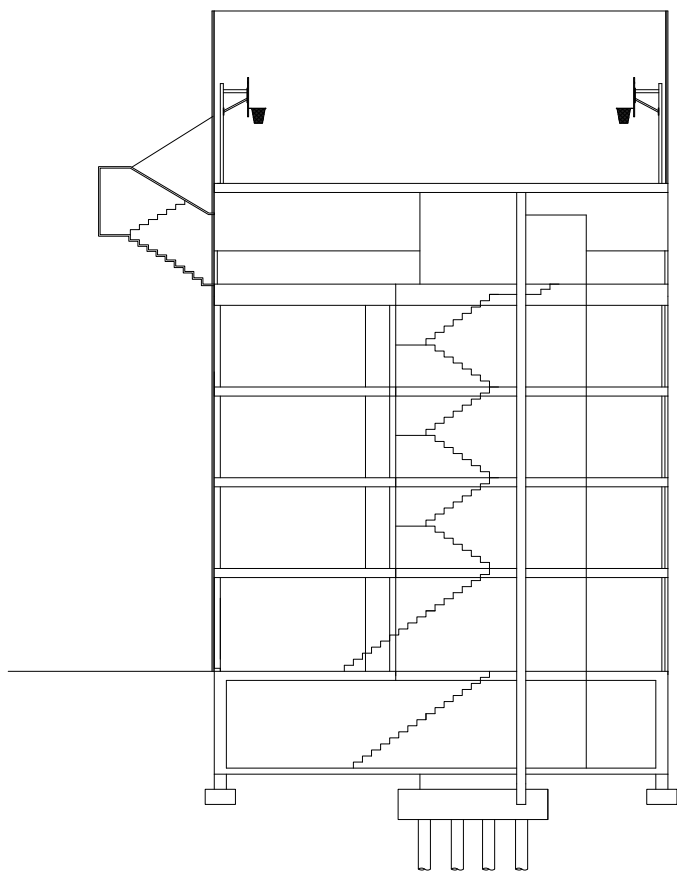


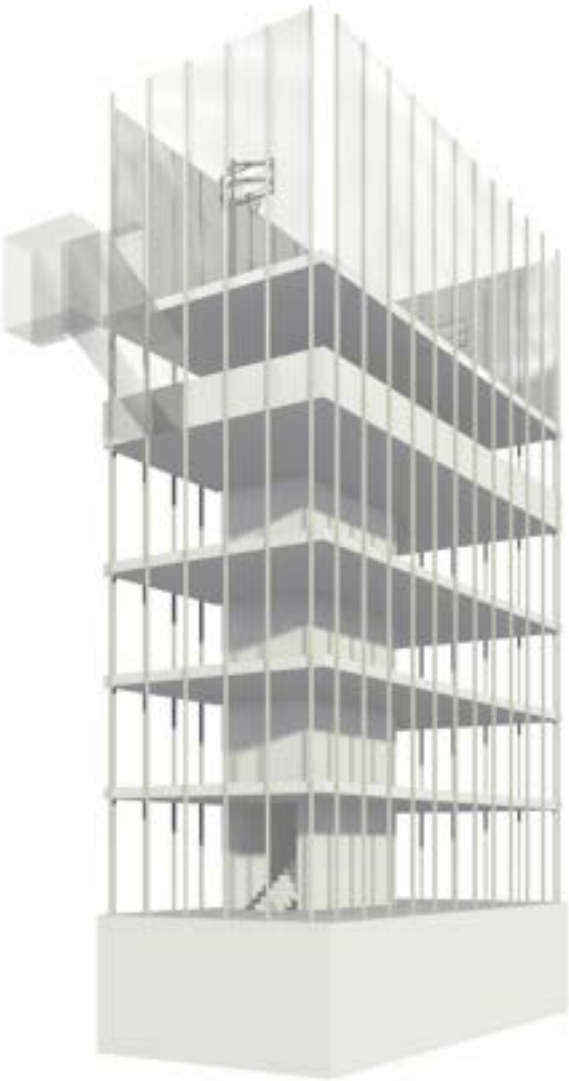
Crown

The typology of the Oporto townhouse includes a rich inventory of different roof expressions.

The additive, the completed, the refined and the juxtaposed ending of the house dominates the appearances of its silhouette and indicates the history of its accretions. The project elaborates a dependency of the normal and the celebratory. The crowning of the building is no longer individual but makes a collective and shared space for the inhabitants of the house available.





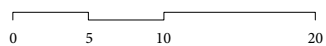
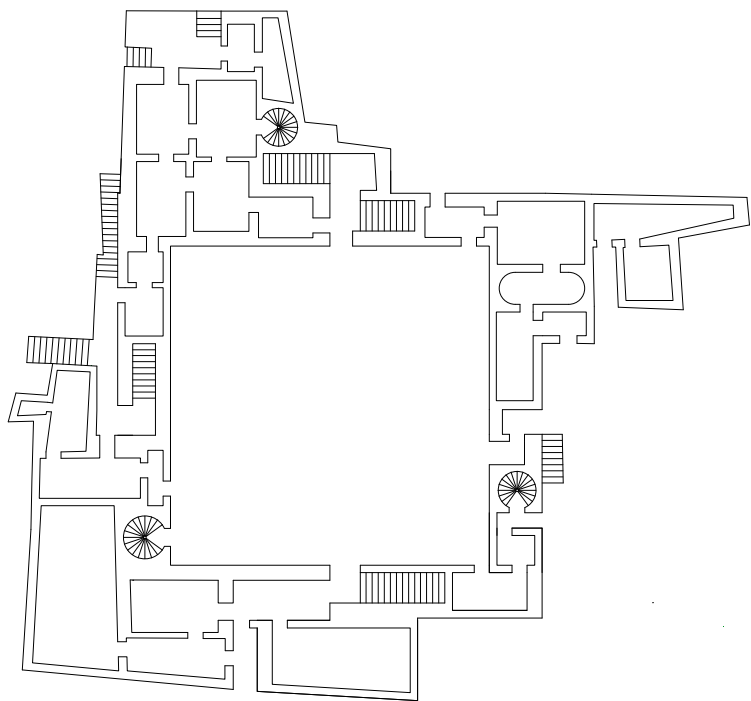


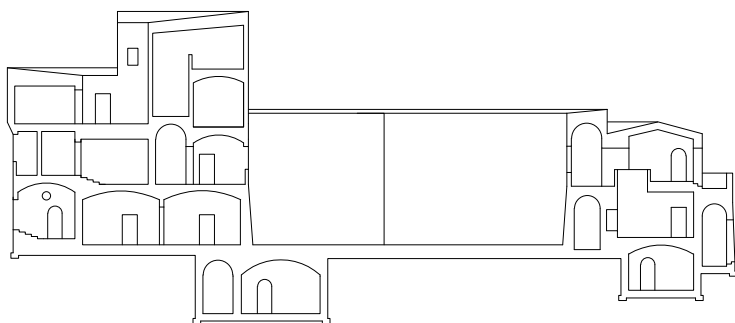


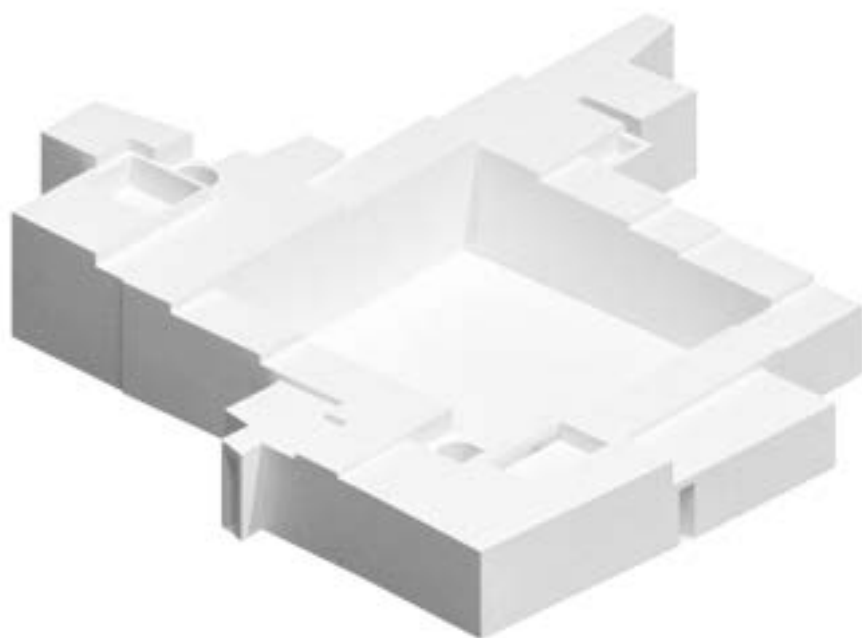
Interlocked paradise

In Porto, walls define the territorial edge. Placement and offset of walls allow access to the steep topography. Wall and plateau accomplish the topographic organisation of space. They correlate with the idea of place and street. Interlocked paradise is a project that differentiates the adaptiveness of the edge condition, the capacity to react and respond to a complex locality in order to introduce a moment of freedom.





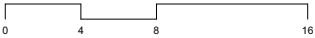
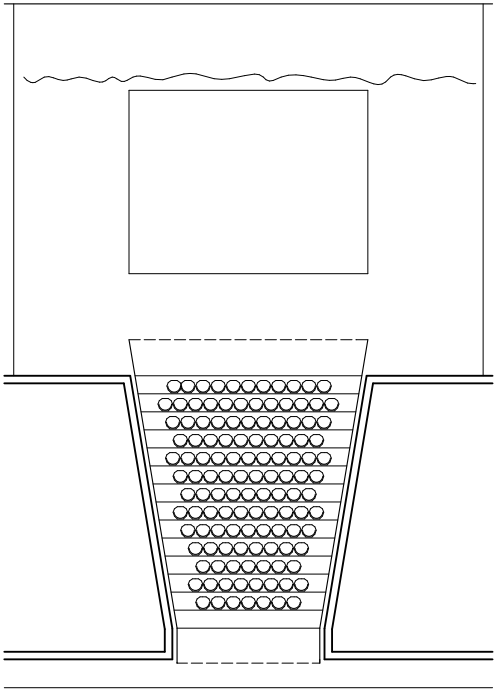


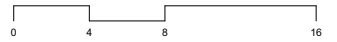
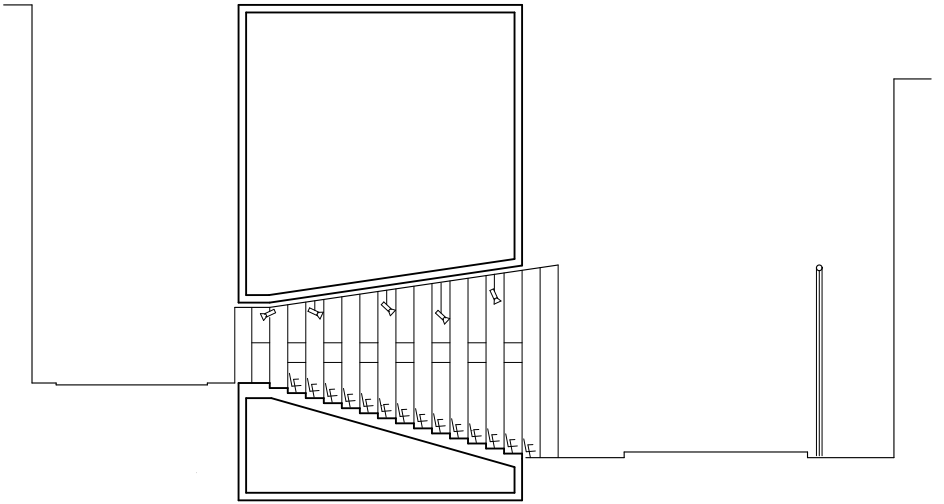


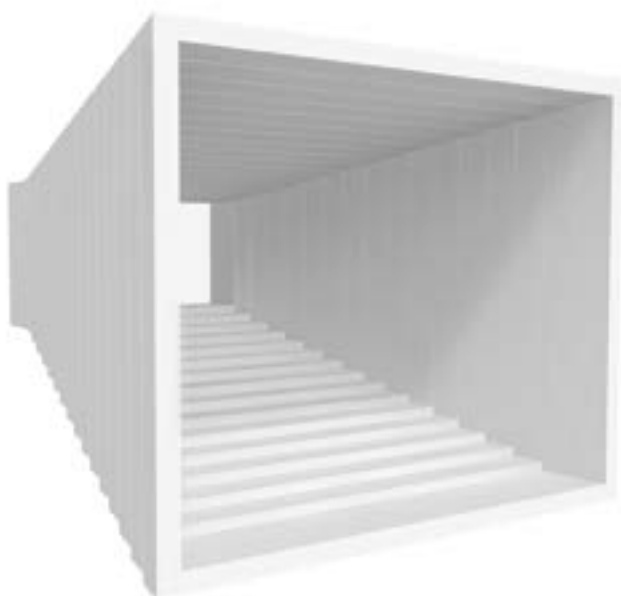


Garage

In town, garage accesses have their own logic and their own expression. A slope connects the urban street level with a lower court. The project is an incision into masses and makes the split of the urban level available. The result is a spatial in-between that acts as an inducement for the programme of the street.



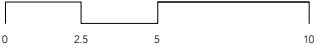
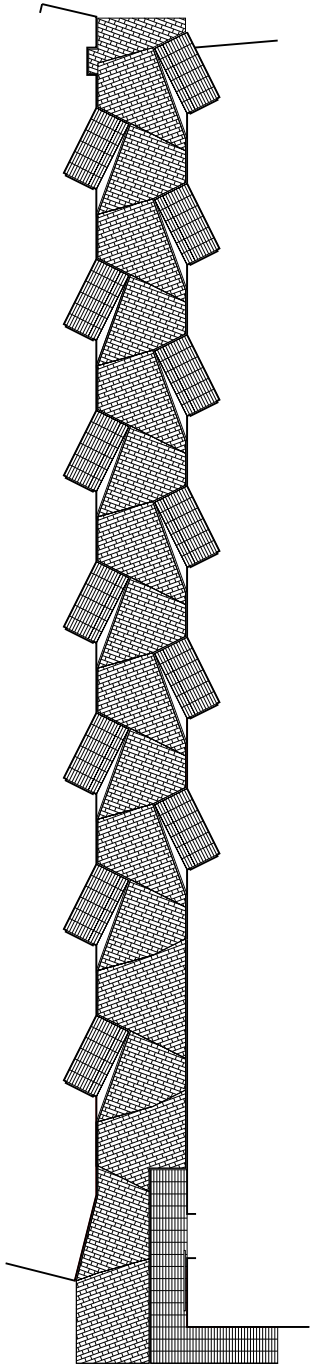


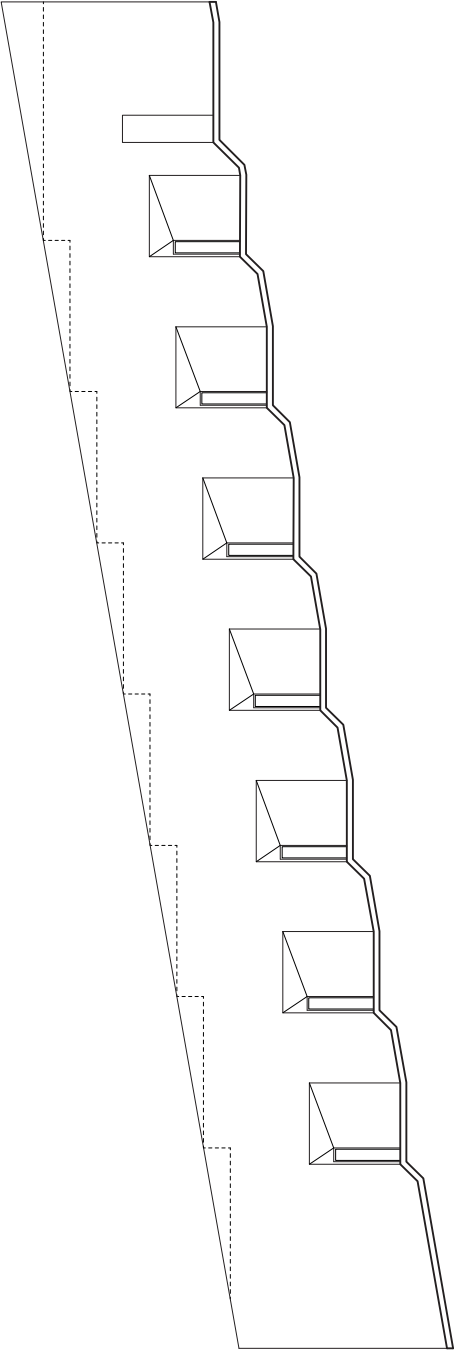


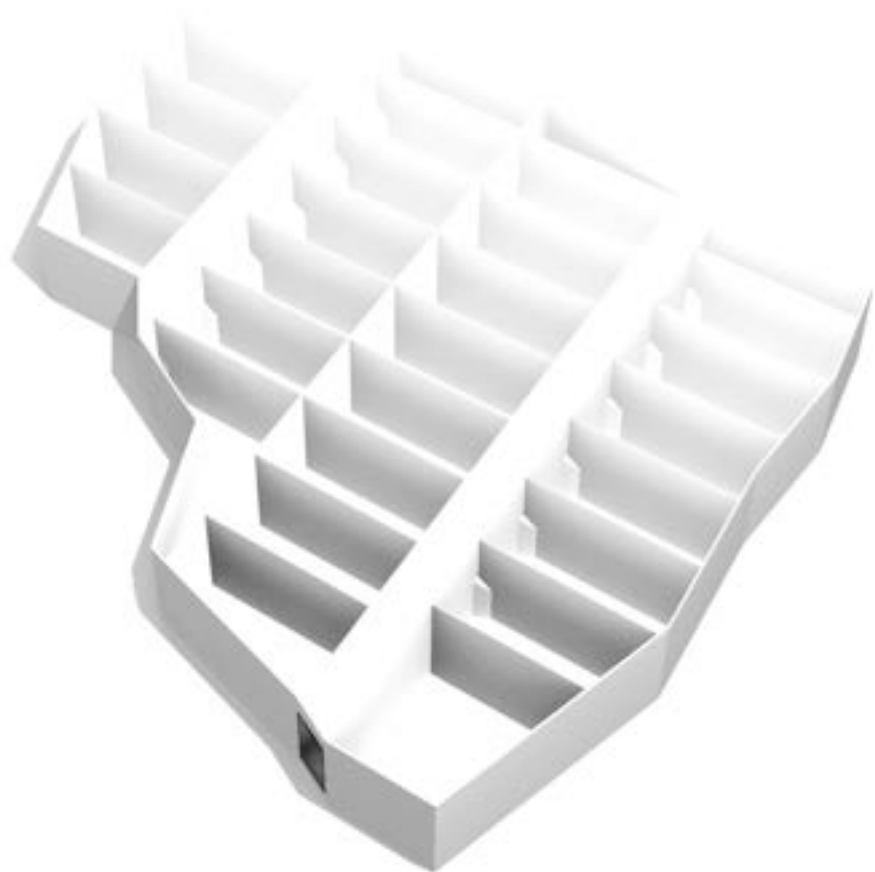


Podium

On a slope, the access for a house requires a specific architectural expression, a solution of how horizontal meets the “transitarian” slope. In this project, the architecture of a front-end; of a porch, defines the specific architectural agenda, our attention that gives access to a normal house.



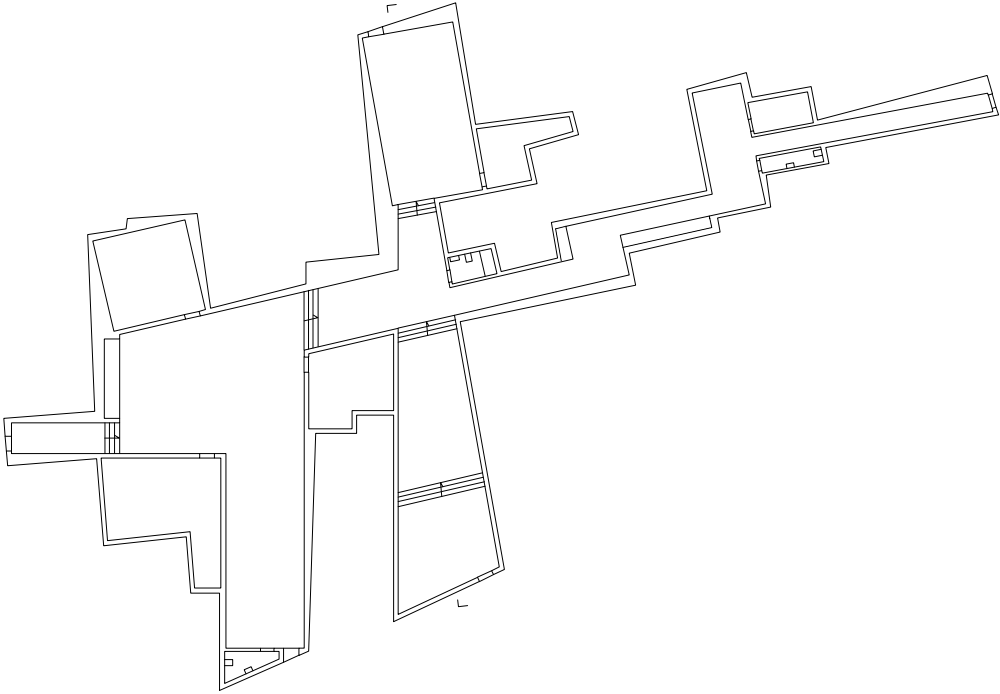


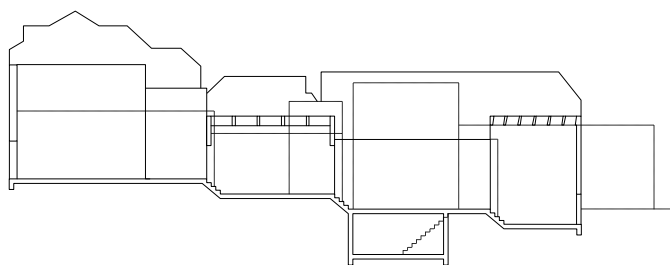


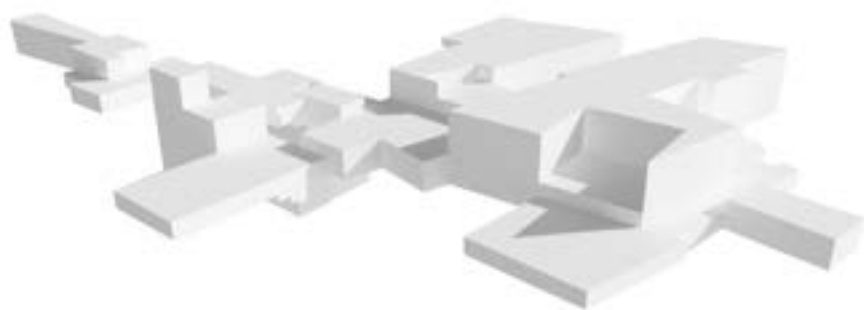


Tentacle

The mapping of derelict houses offers a possibility for a subtle connection among their spaces. The inherently cellular conditions of space expands and connects towards an own formless expression of a house.





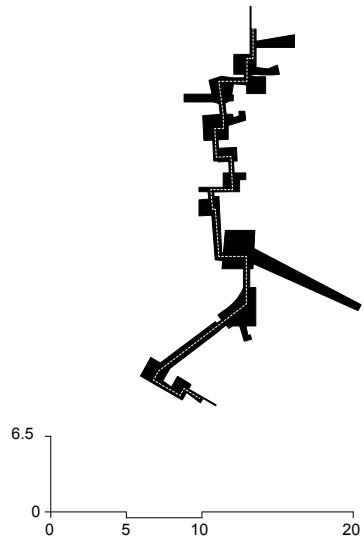
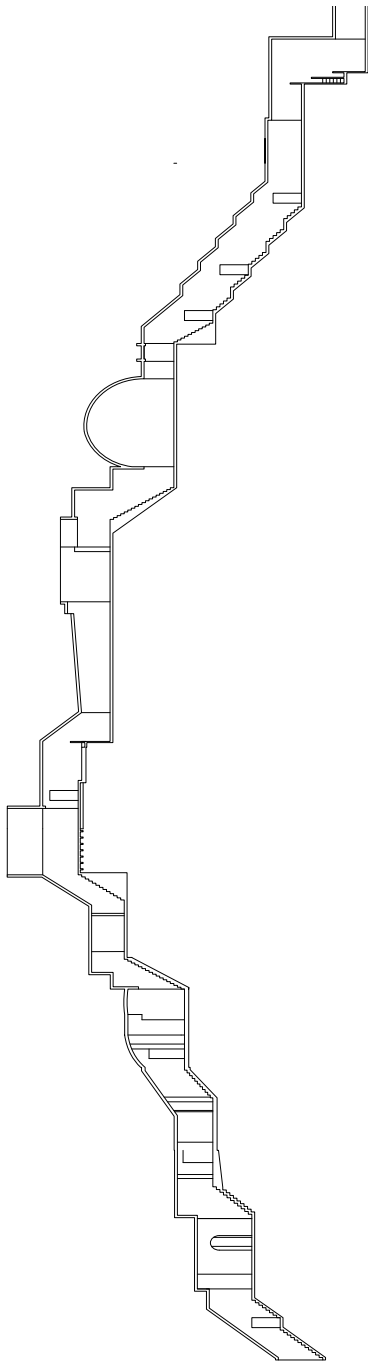




Social formality

In the medieval town, the access to an individual house is defined by a three-dimensional pattern, overlapping and crossing other properties. In fact, it is a complex easement, as an expression of rights and duties, allowing access to such a spatial depth. The proposed project learns from such a possibility of access and introduces such a socially induced formality into a plan.

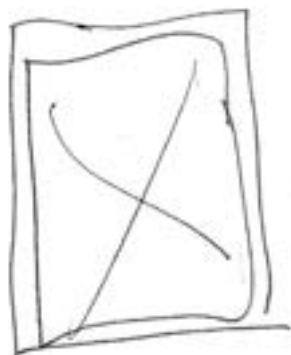
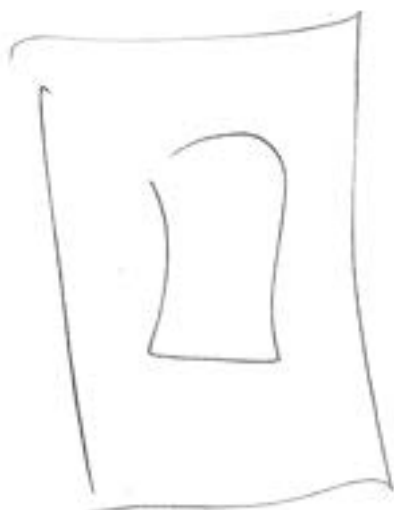


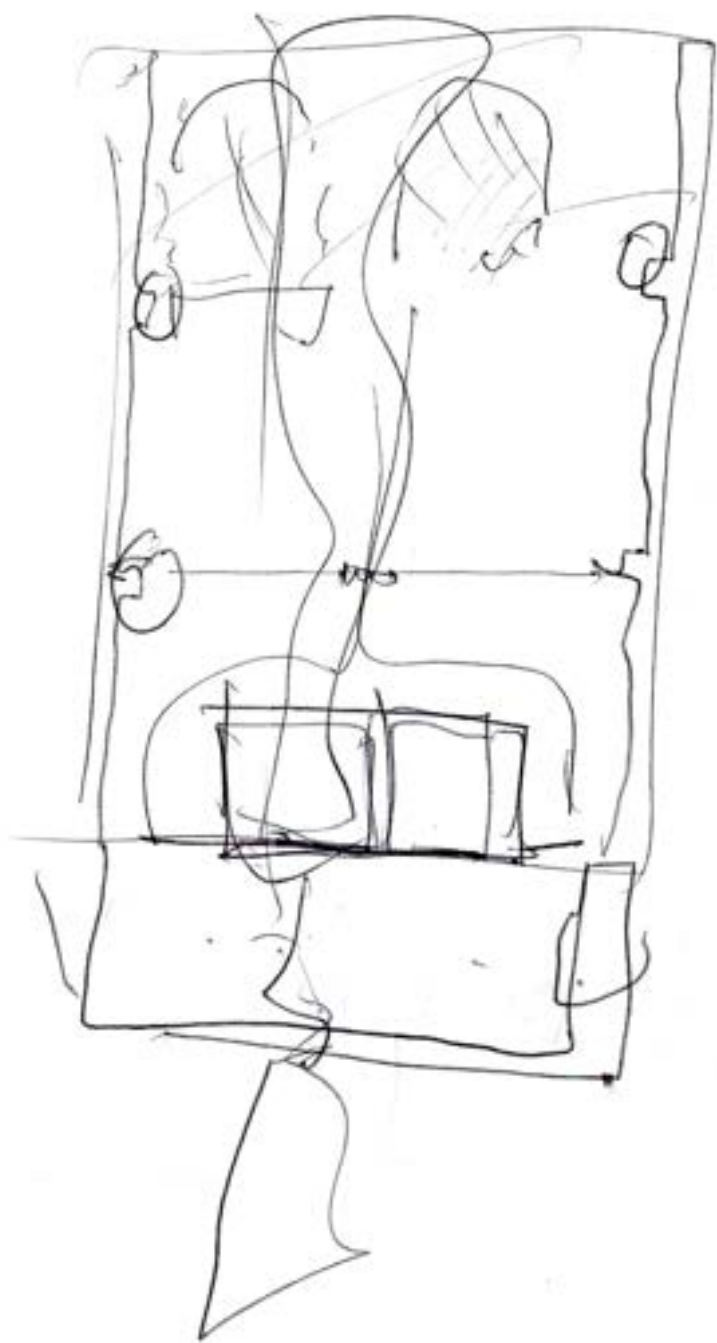


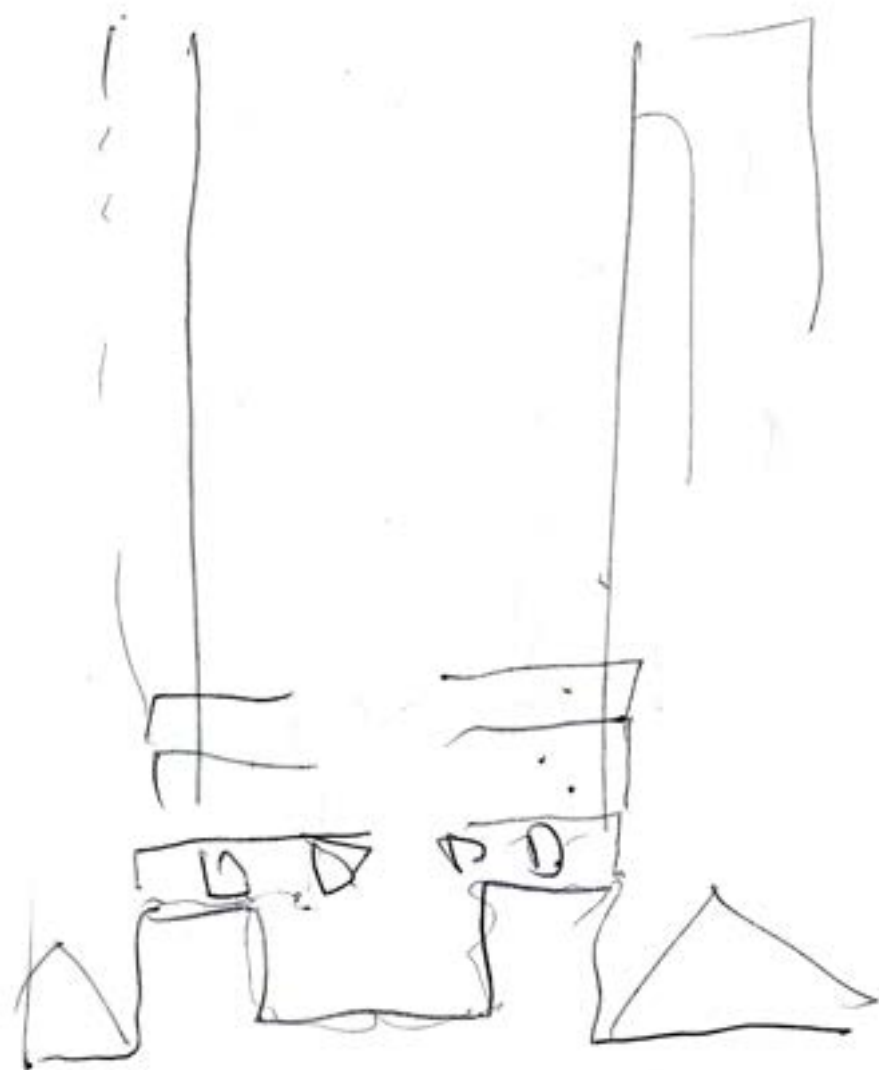


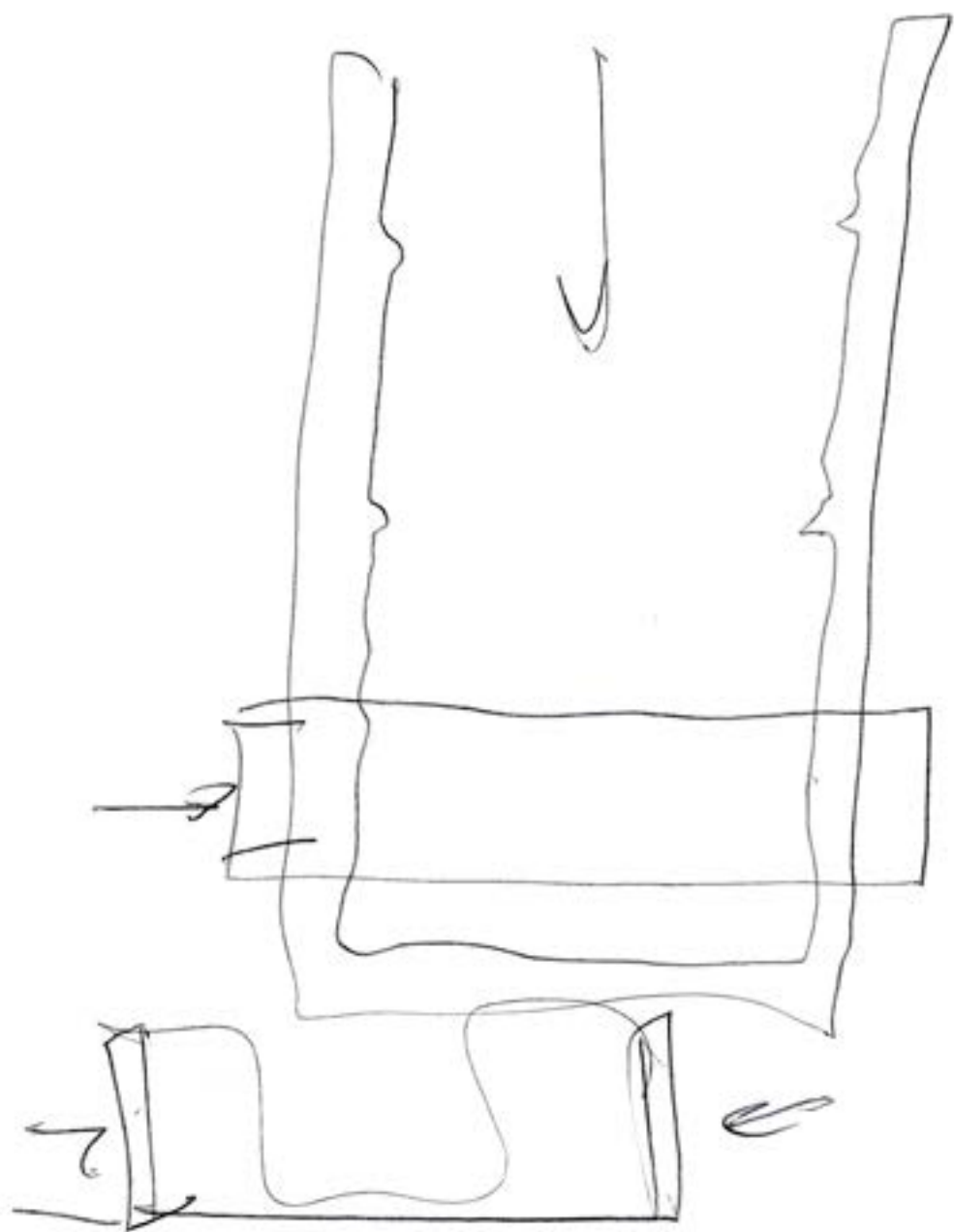
APPENDIX

Parse and Memory \Rightarrow Piling



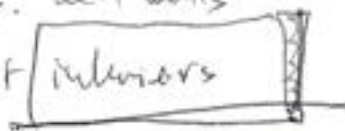




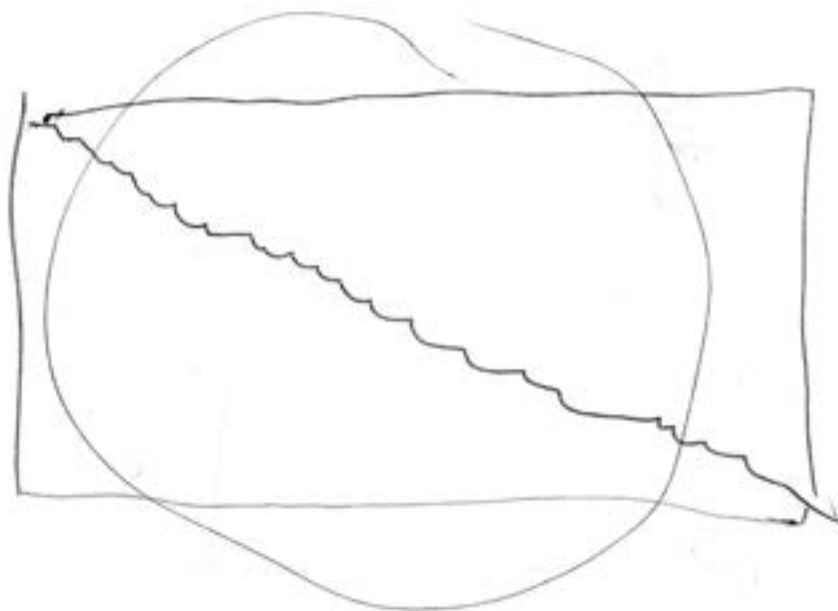
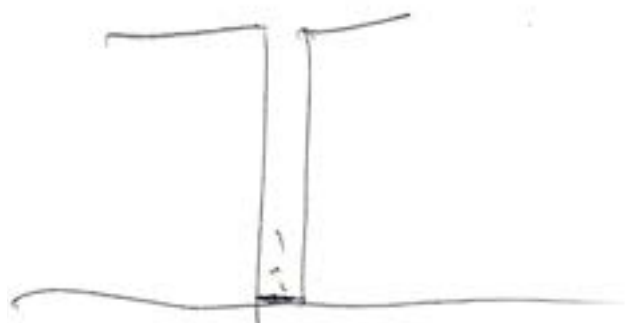


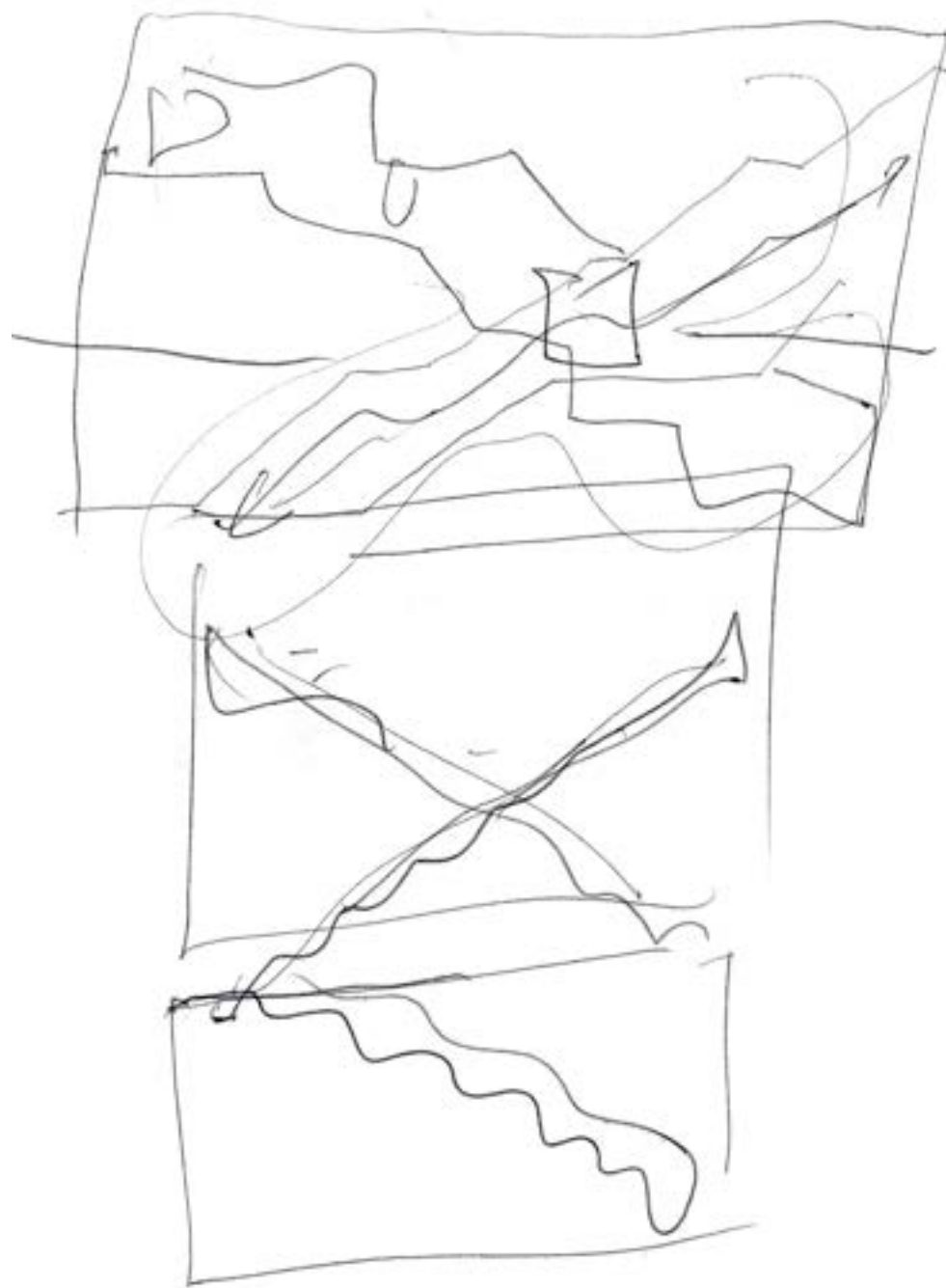
Stairs. and walls

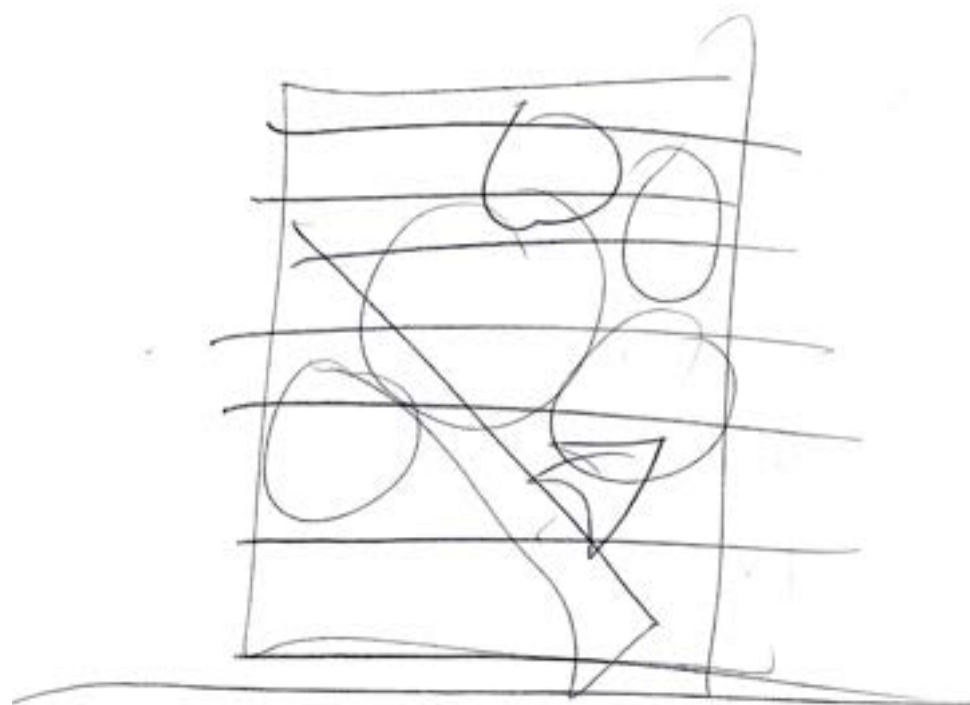
City of interiors

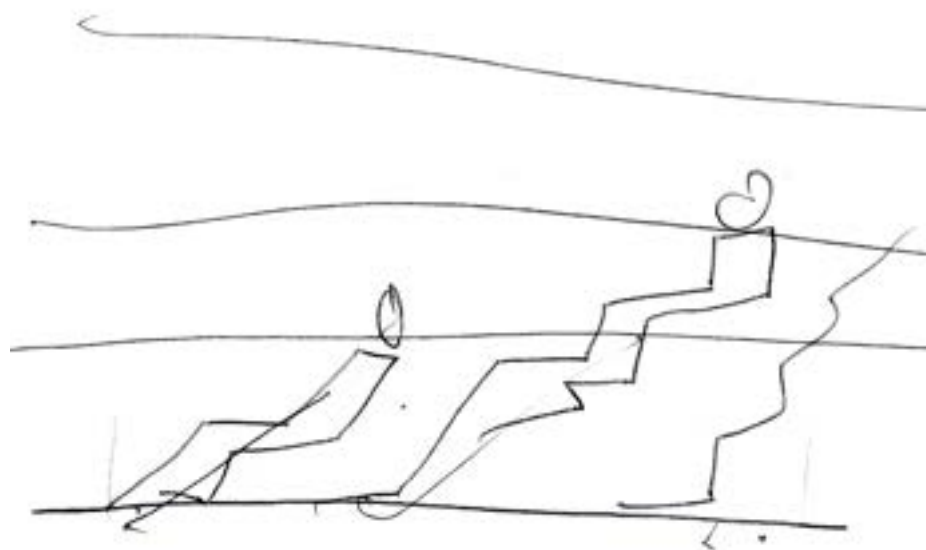


Cascadian

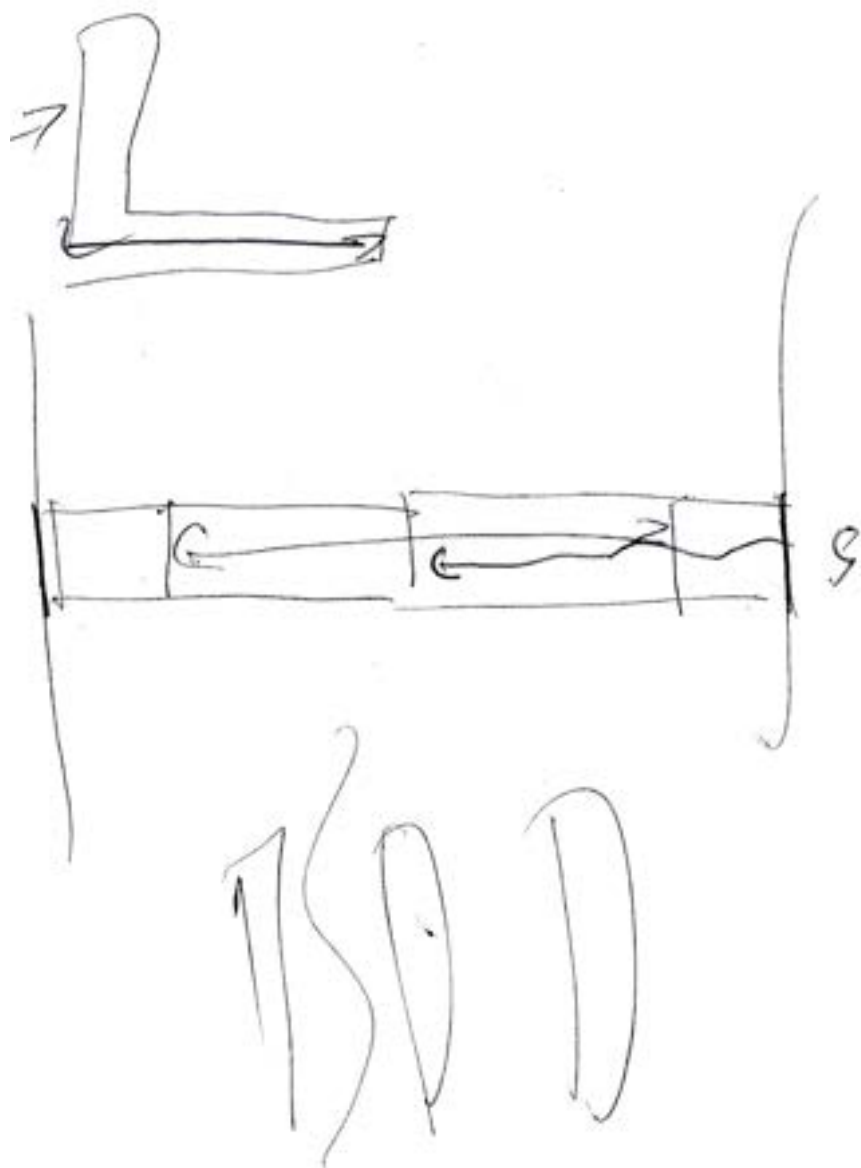


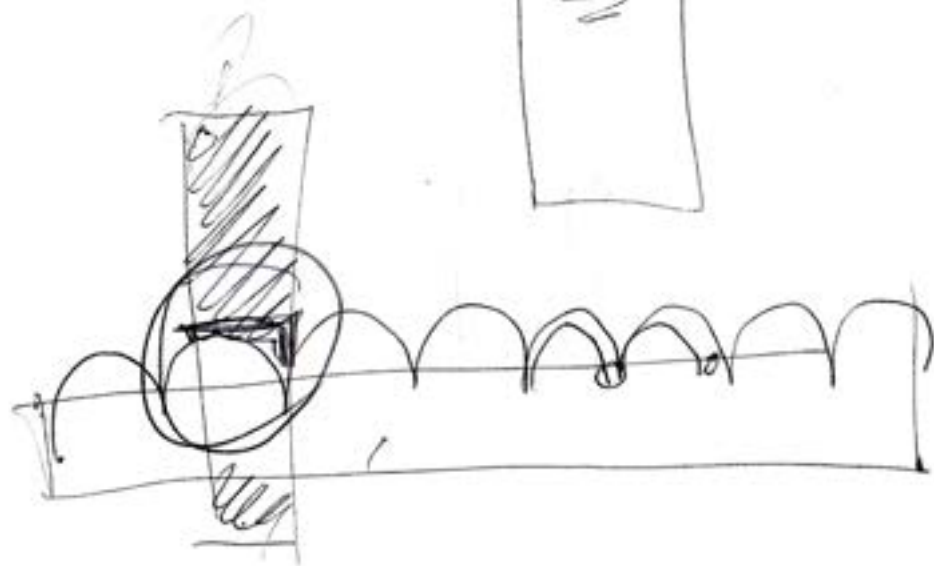
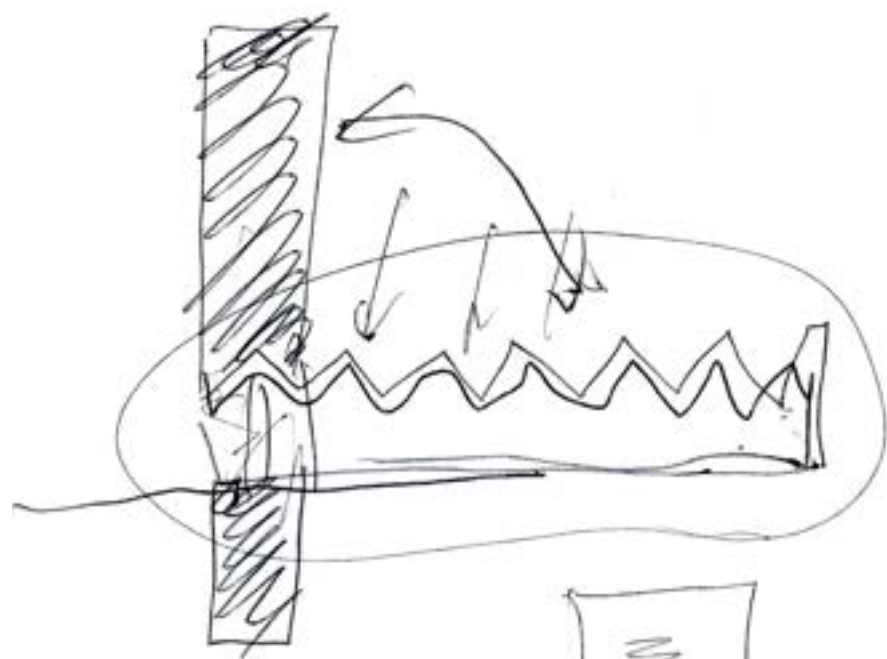


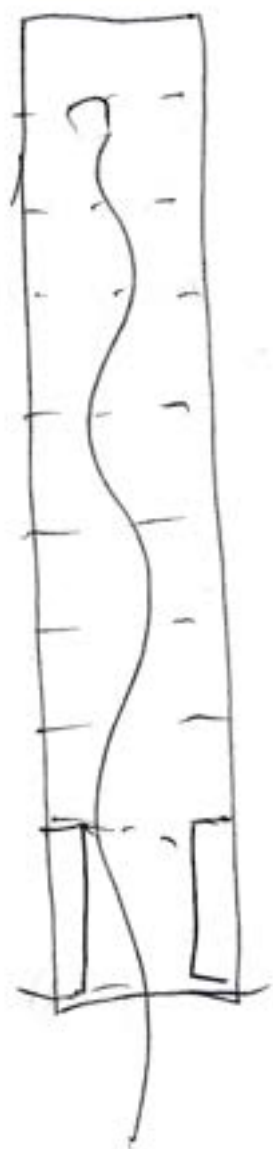


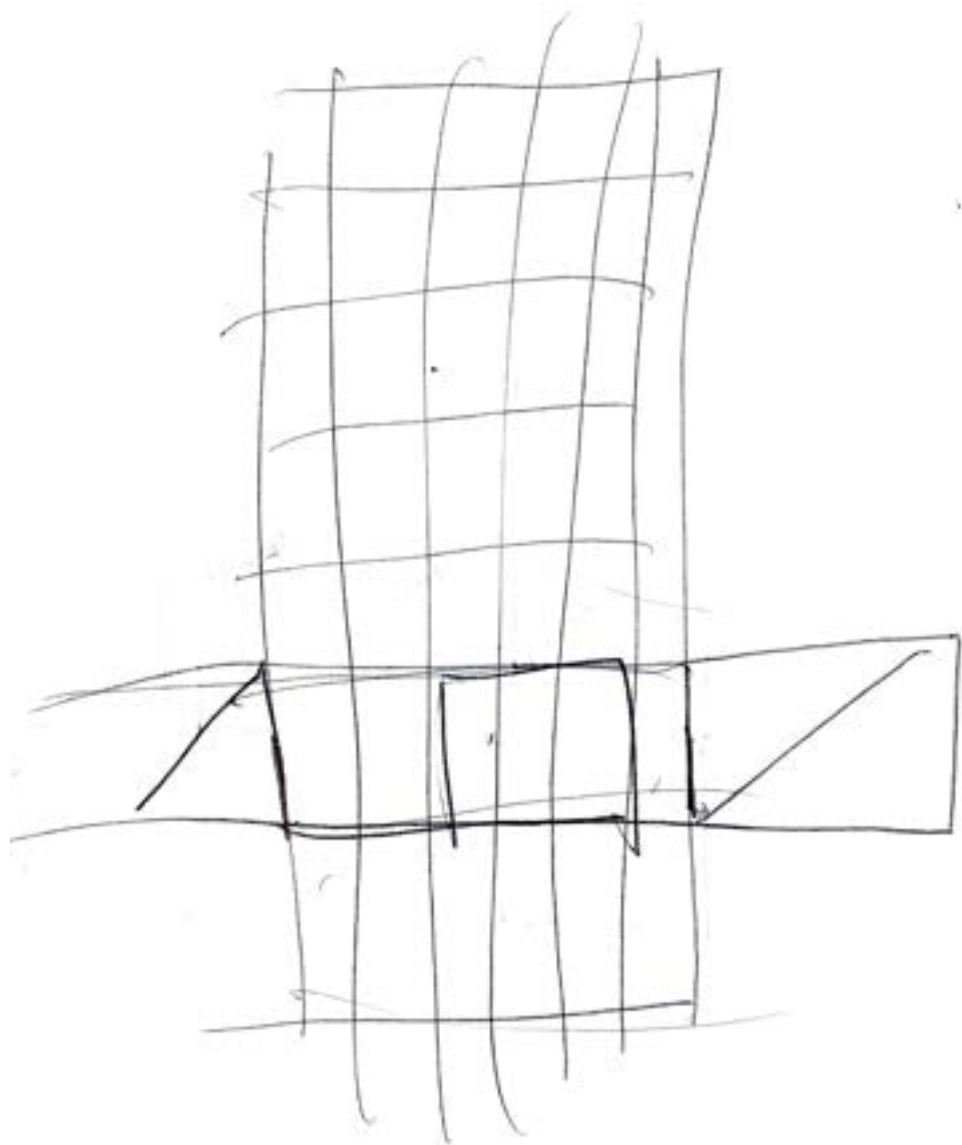


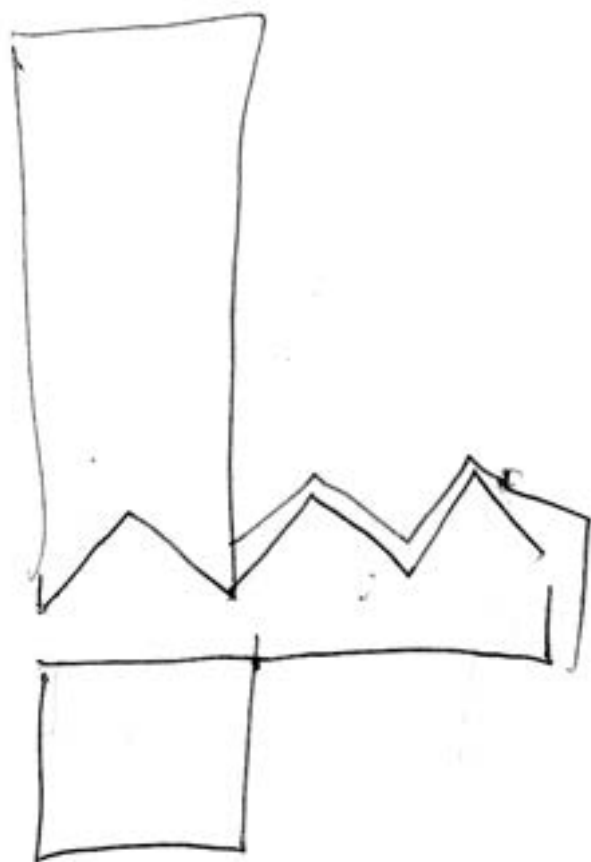
corridor and depth
"deep space"

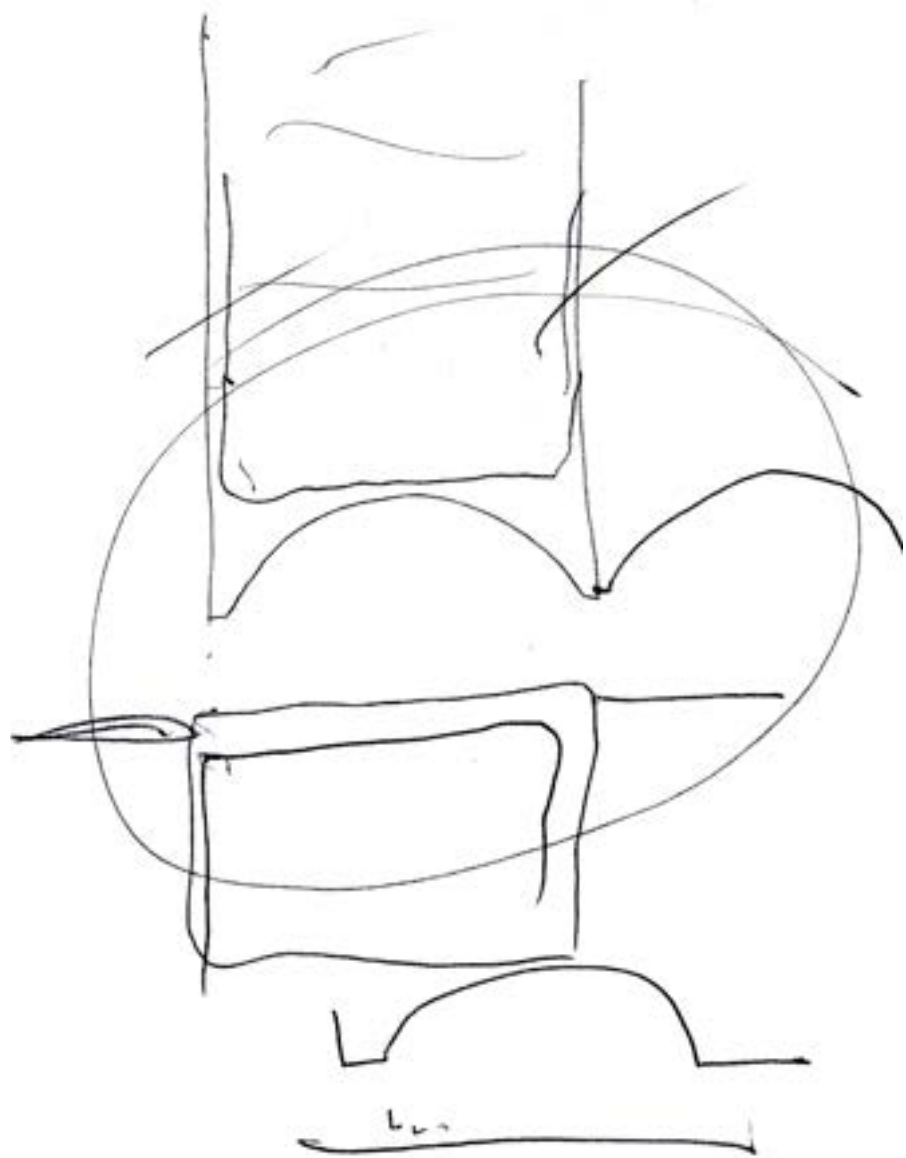








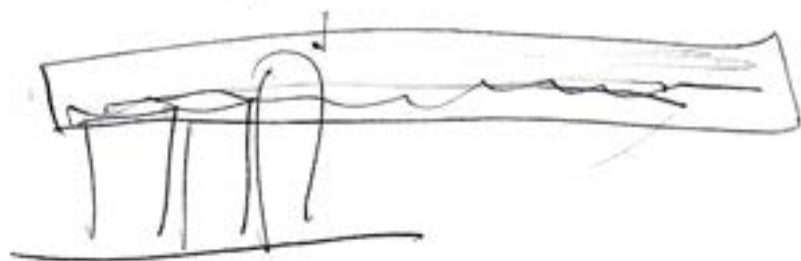


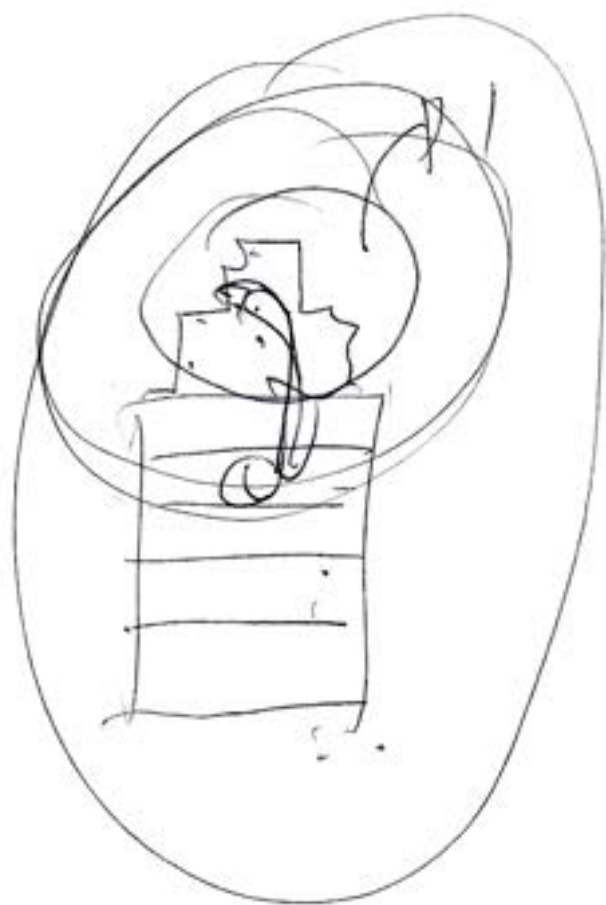


Crown

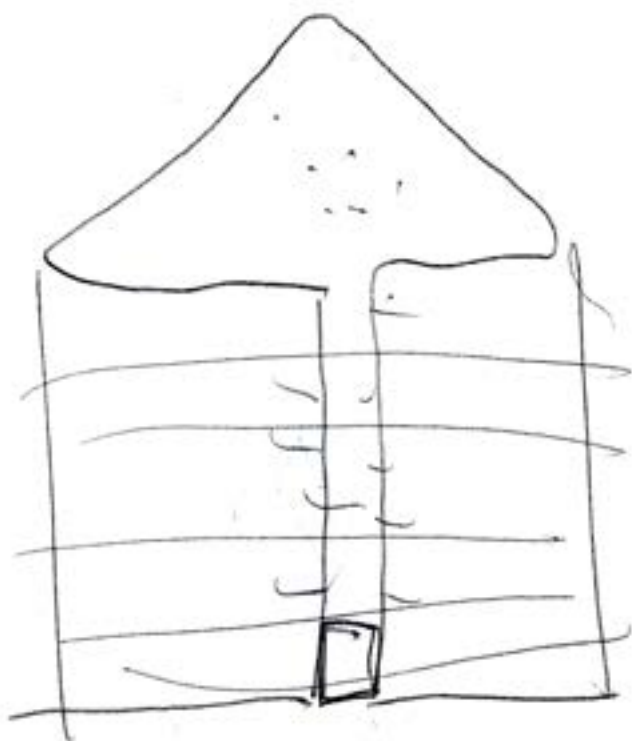
superior parent

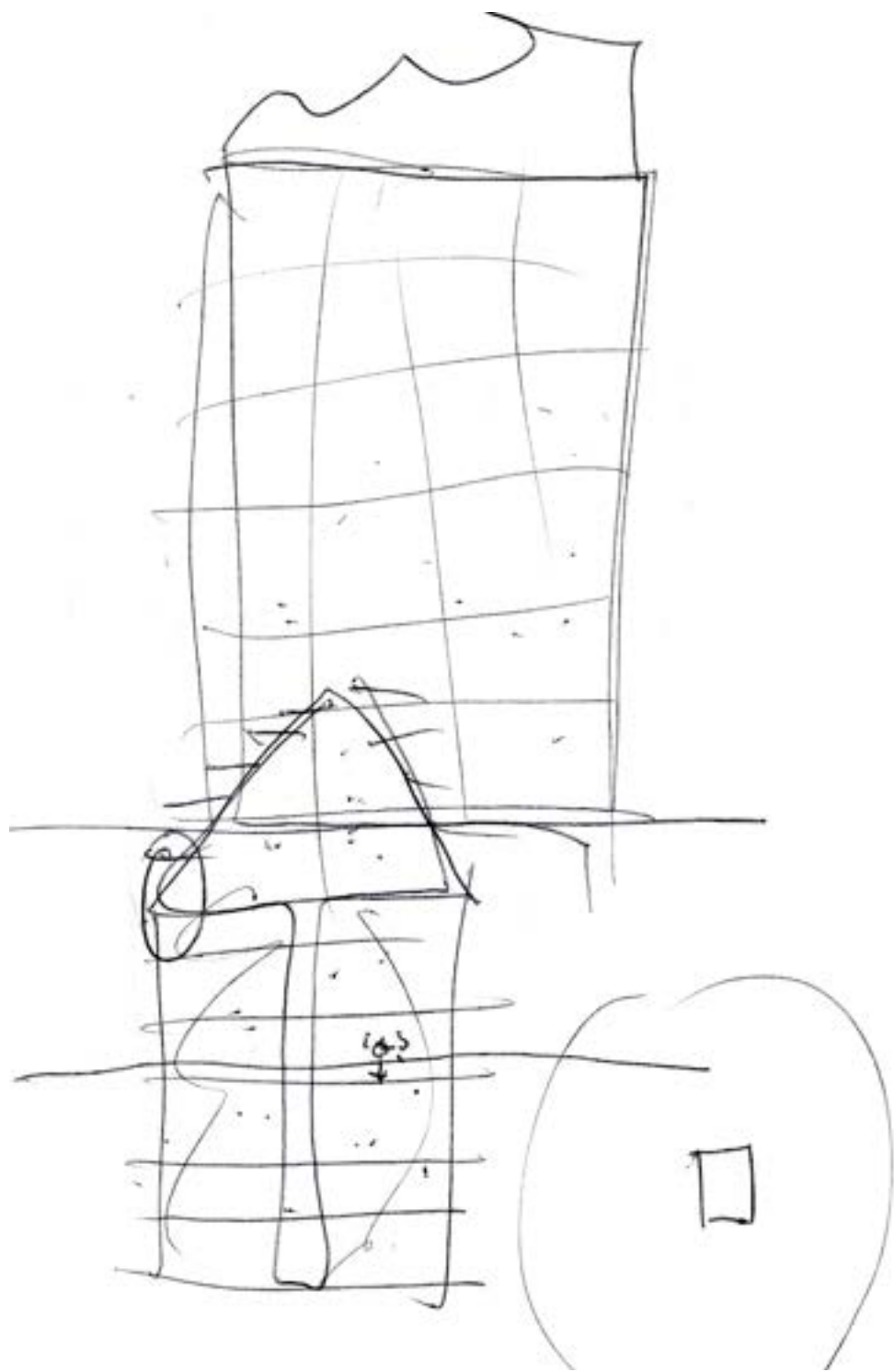
Overarching roof.



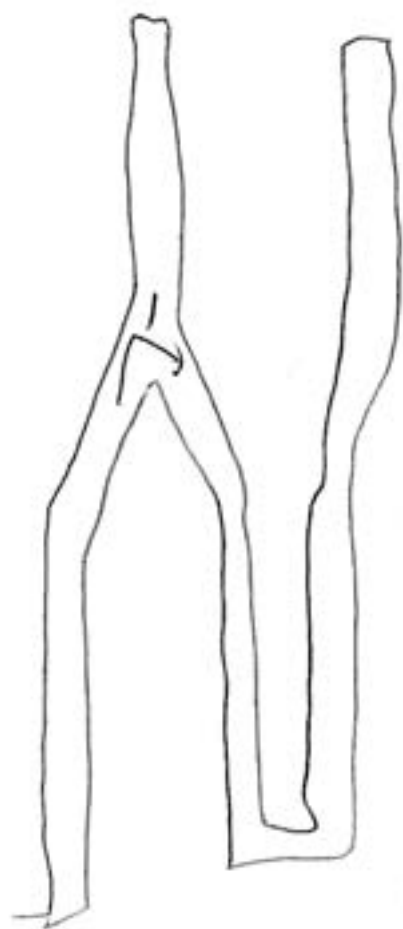


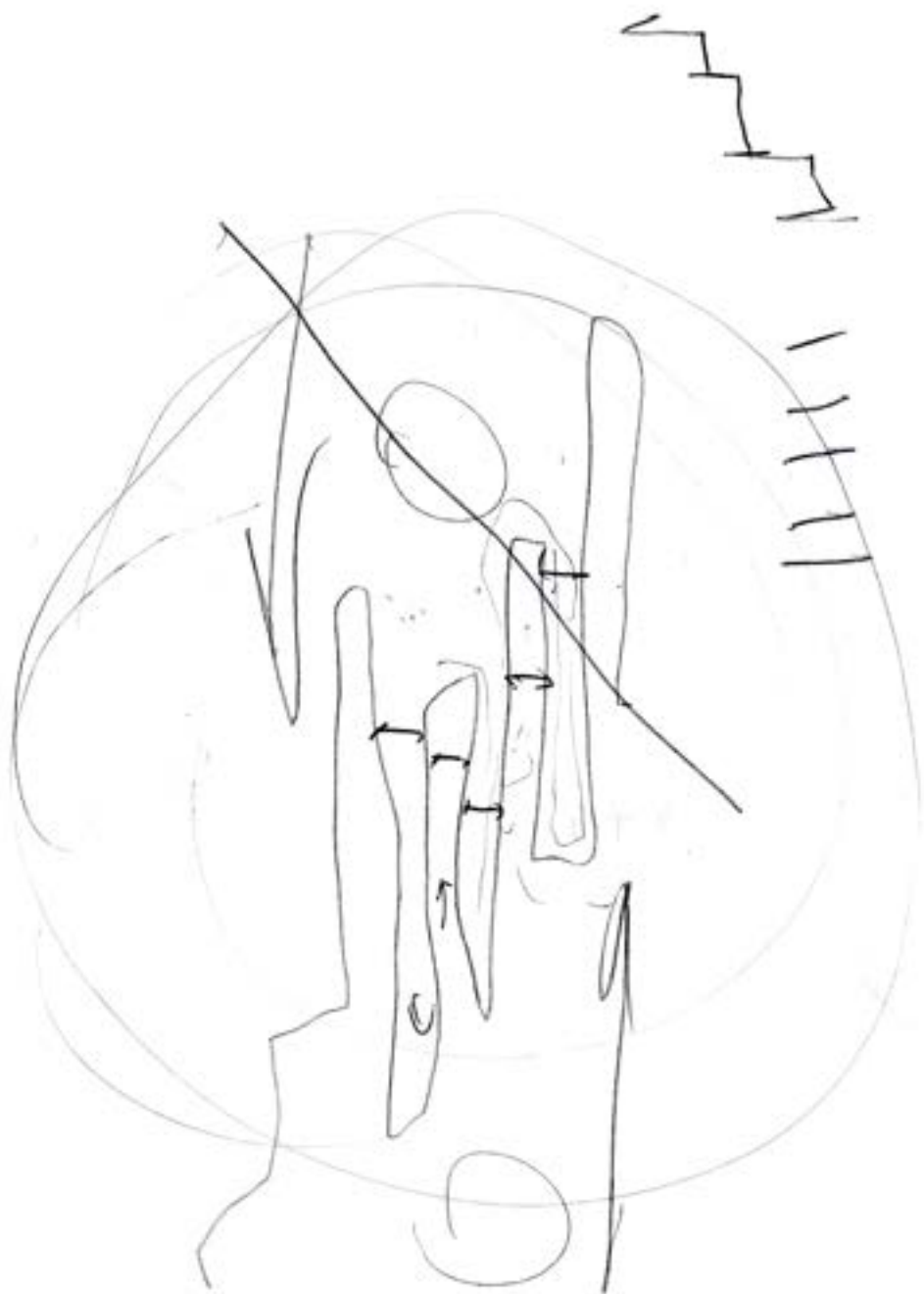
会

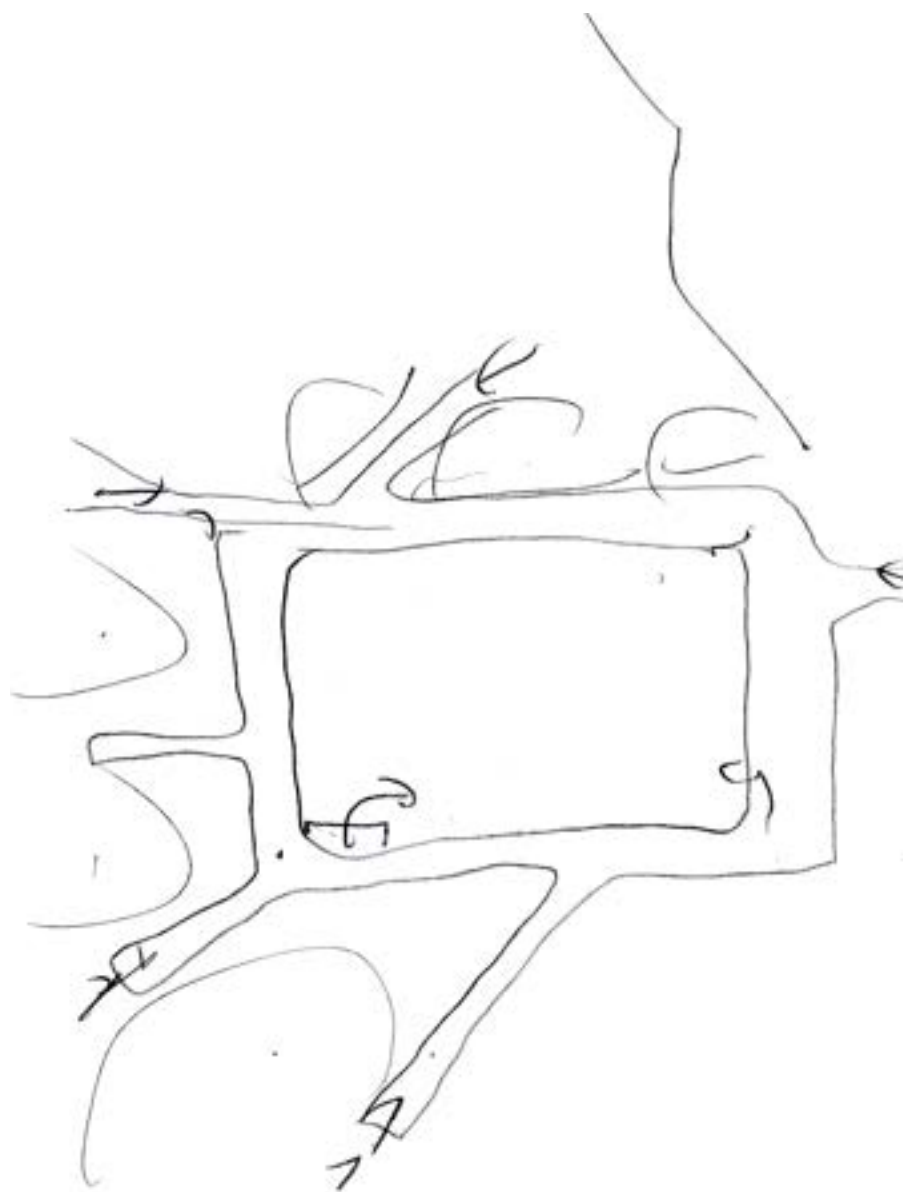




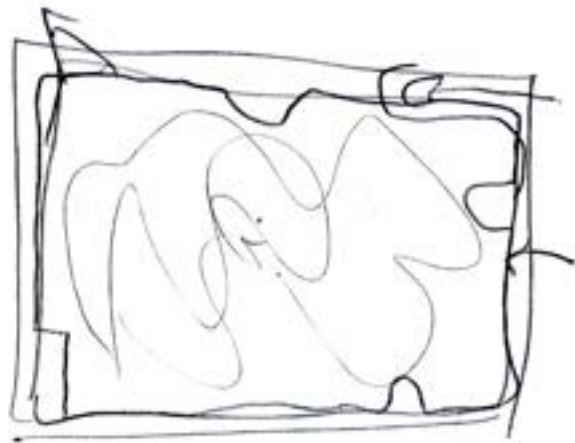
territorial edge

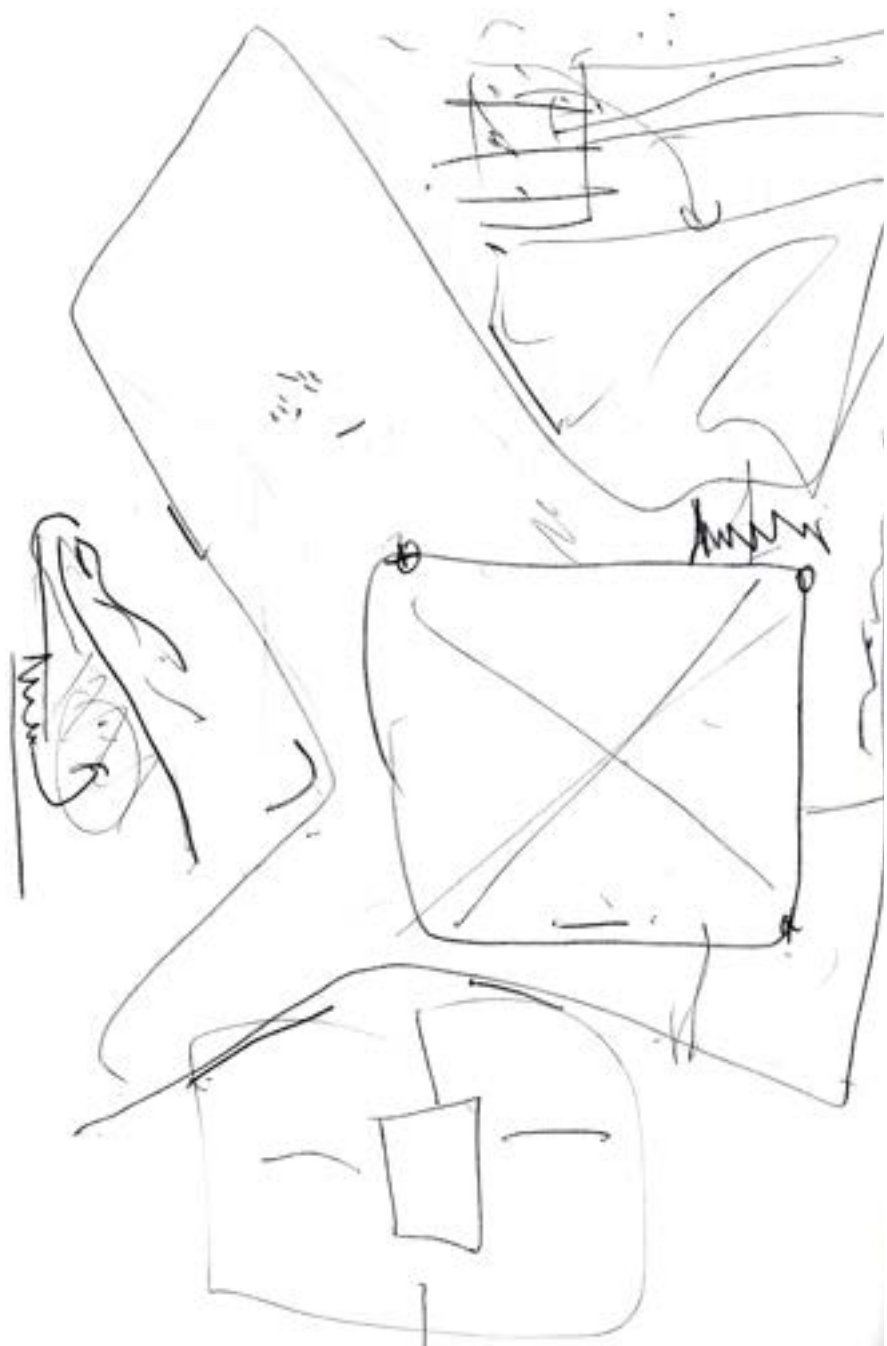


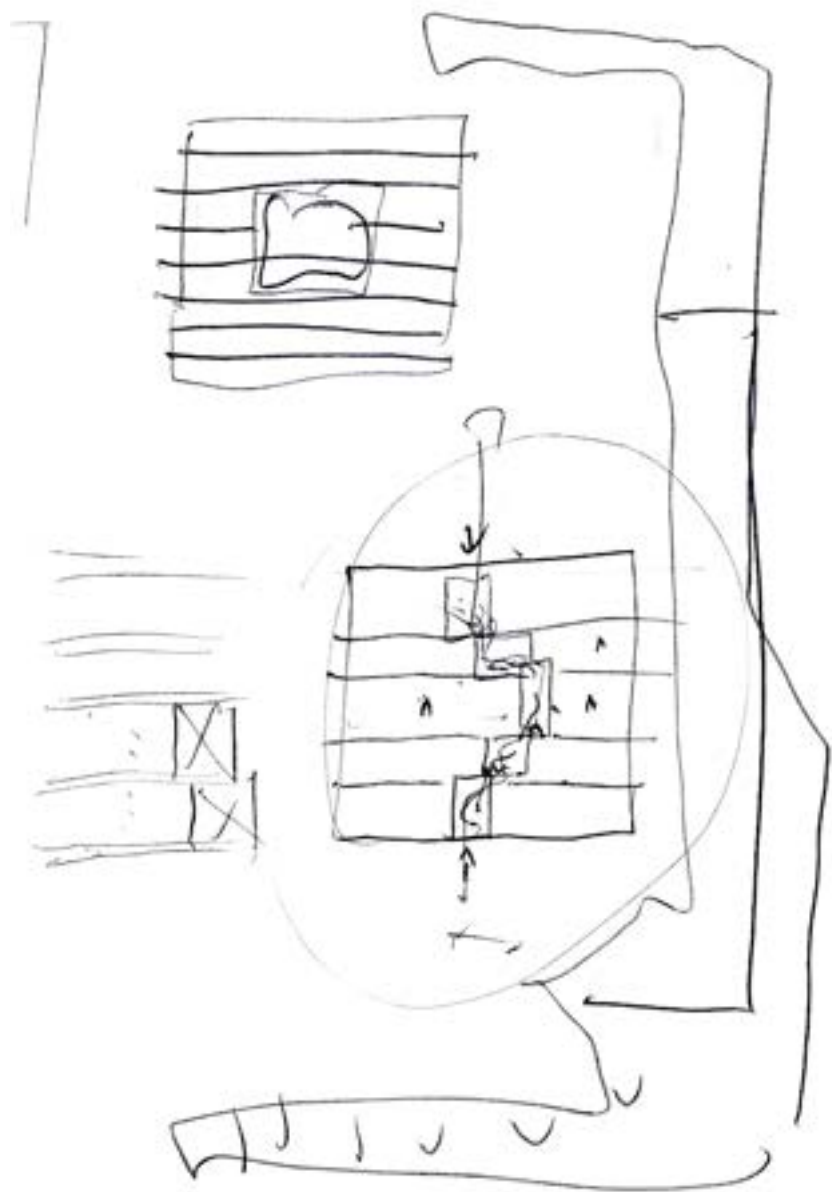




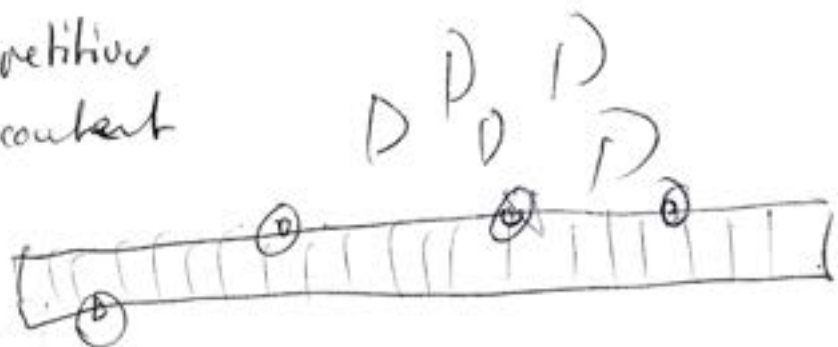
Paradise



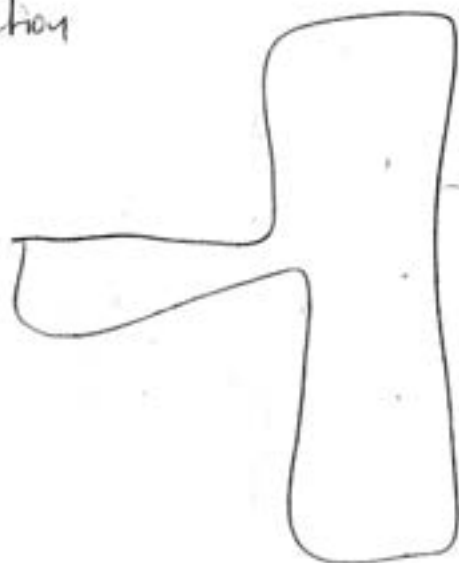




Repetitive
discontent

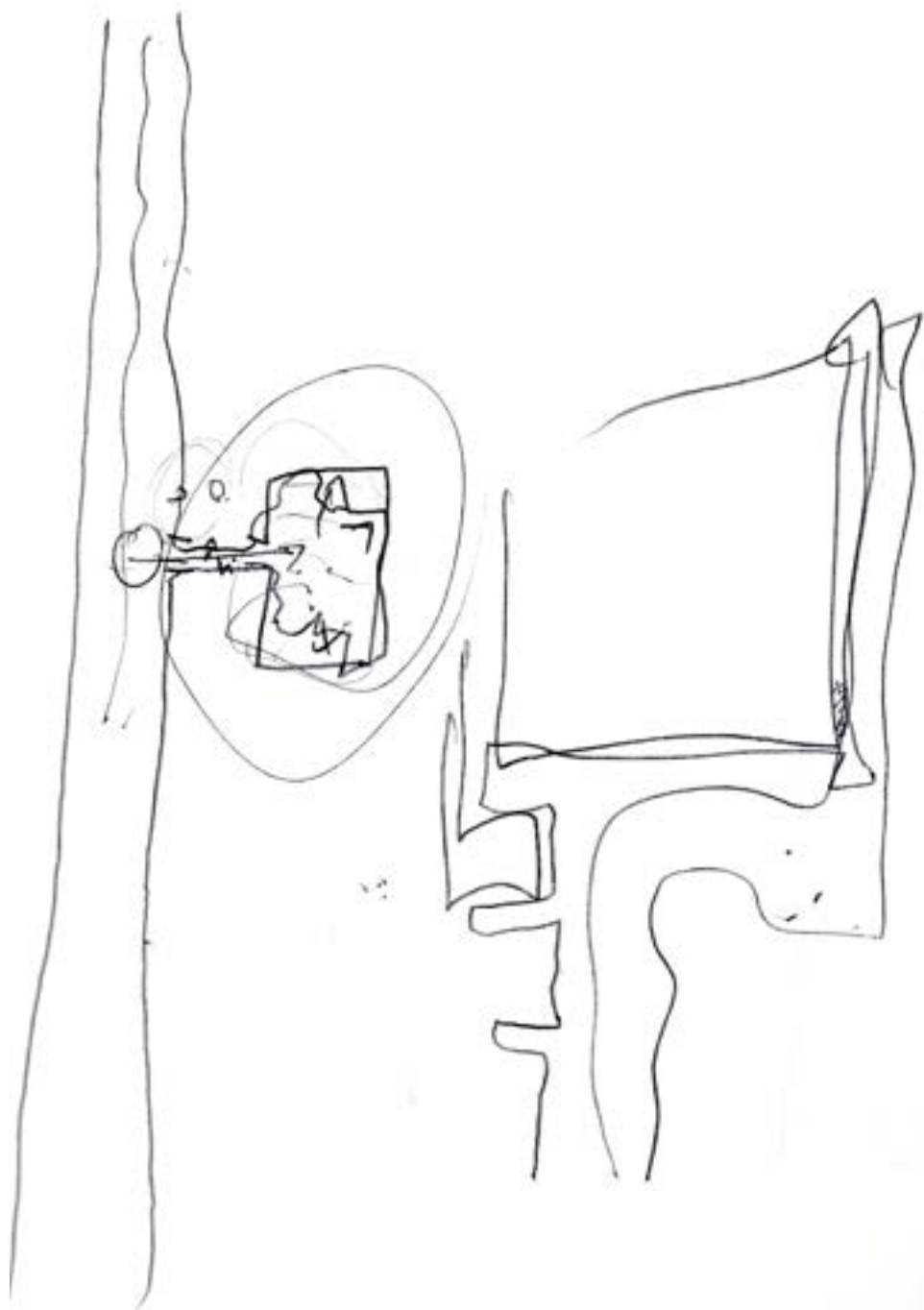


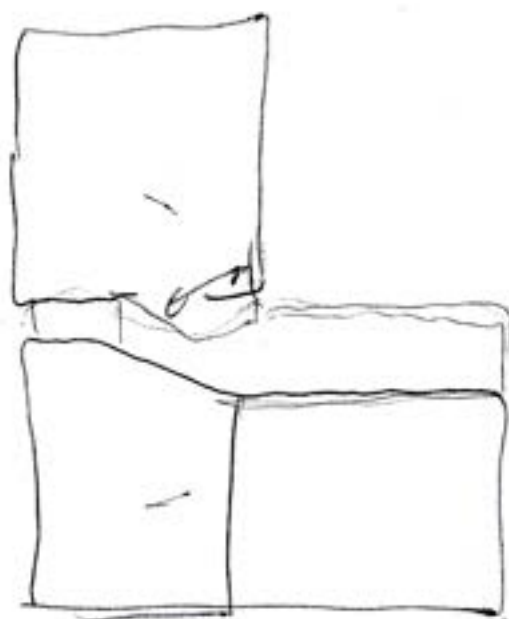
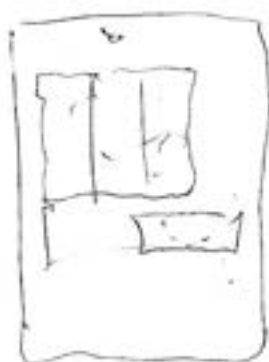
Preservation

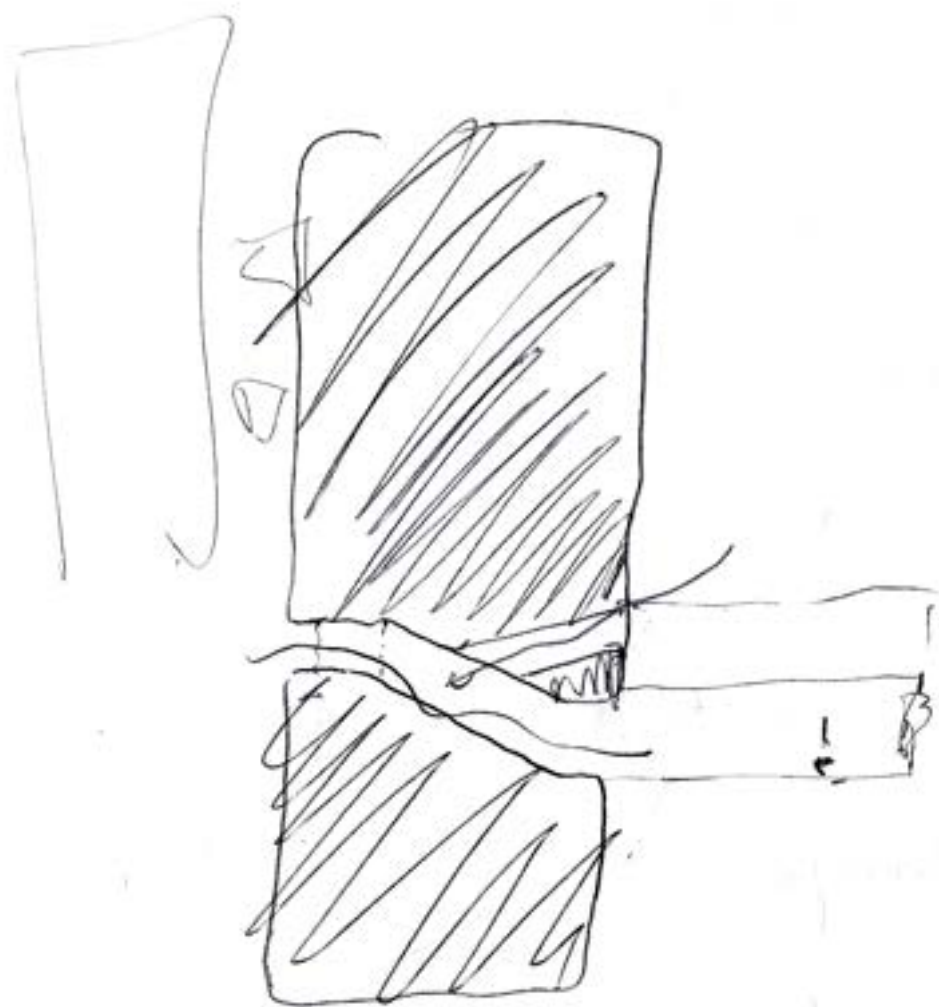


Conglomerate Informal

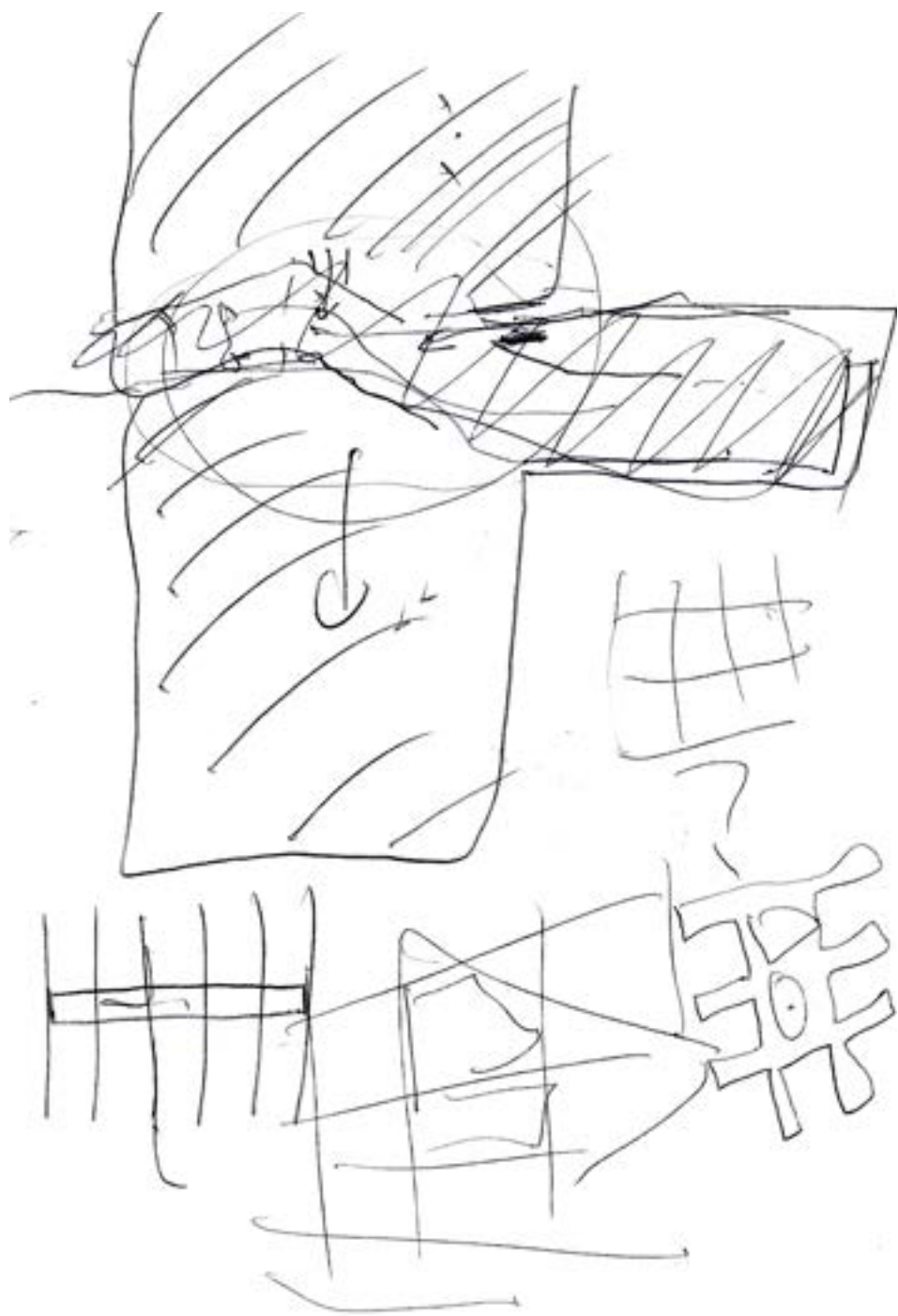
realms of the informal



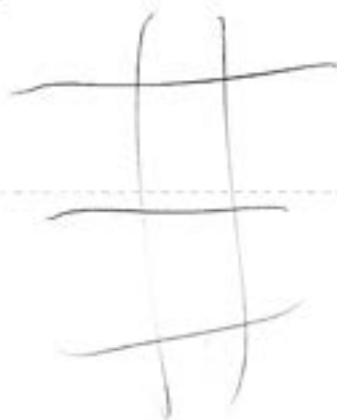
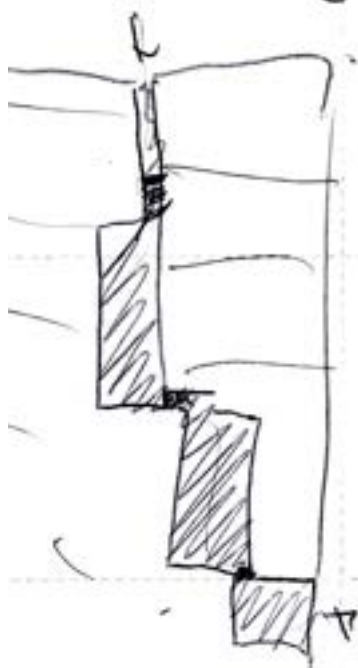
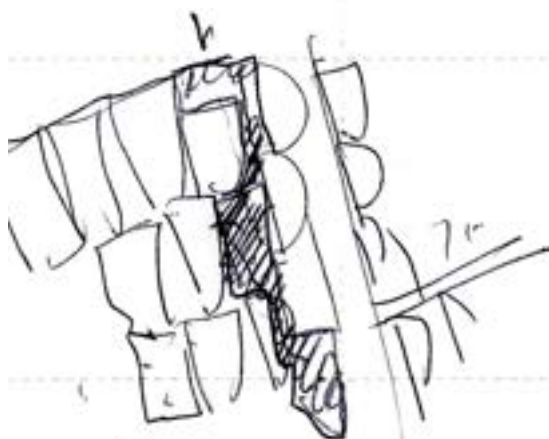
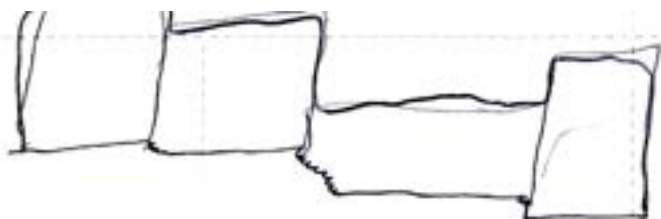


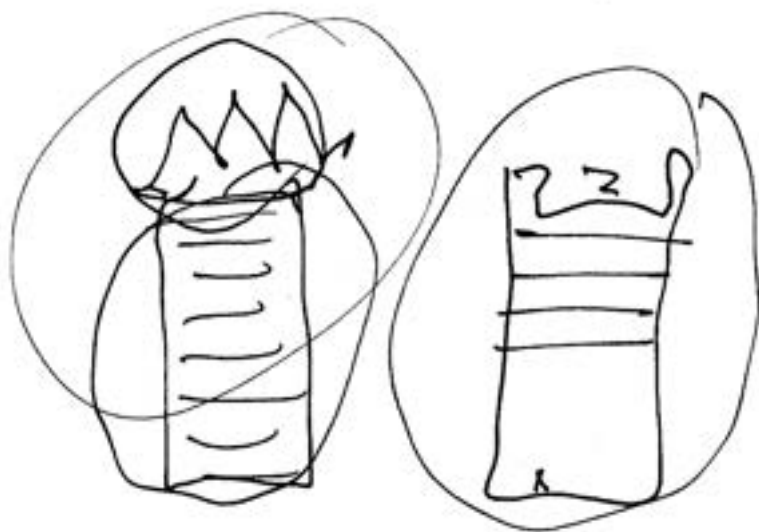




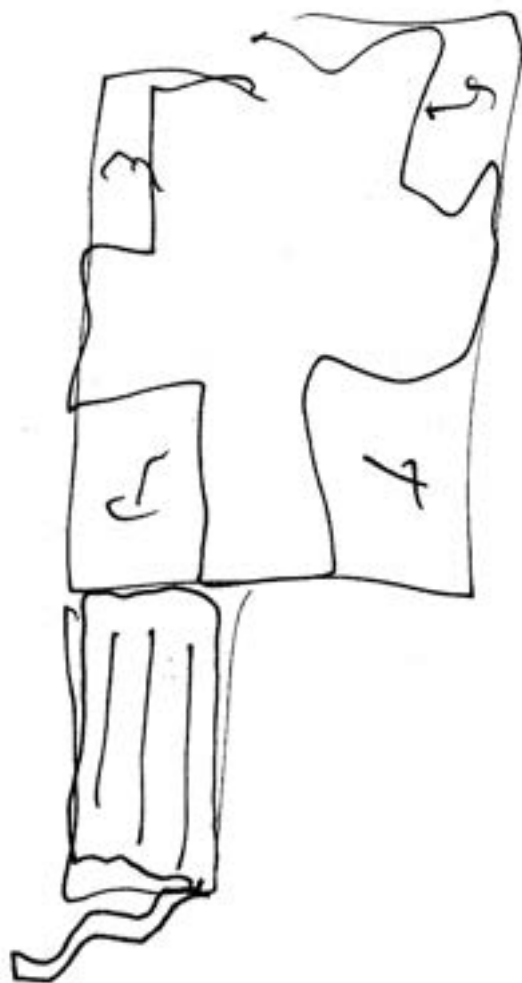


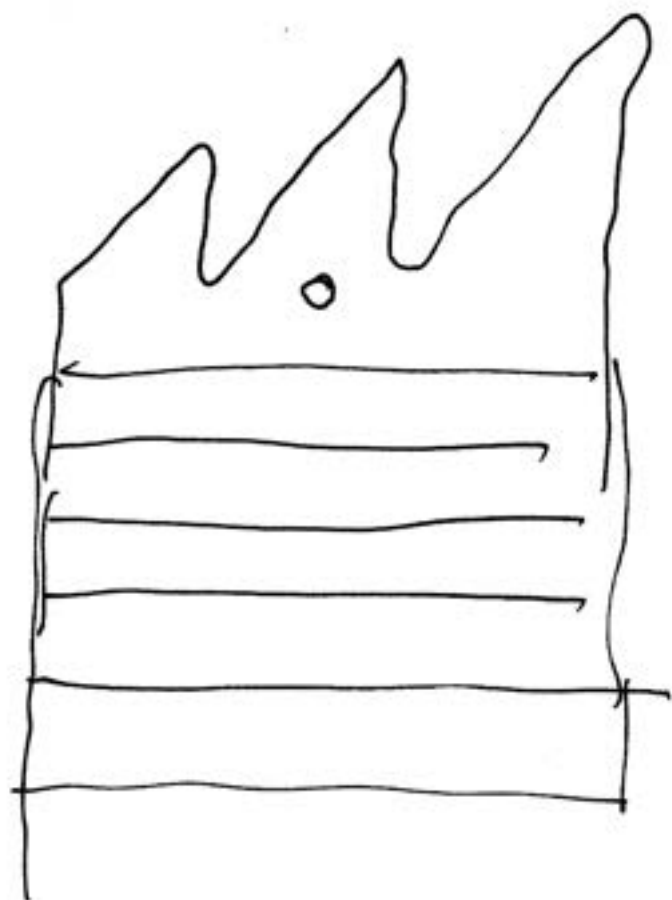
135
600
1/1





- Garage / Path / corner





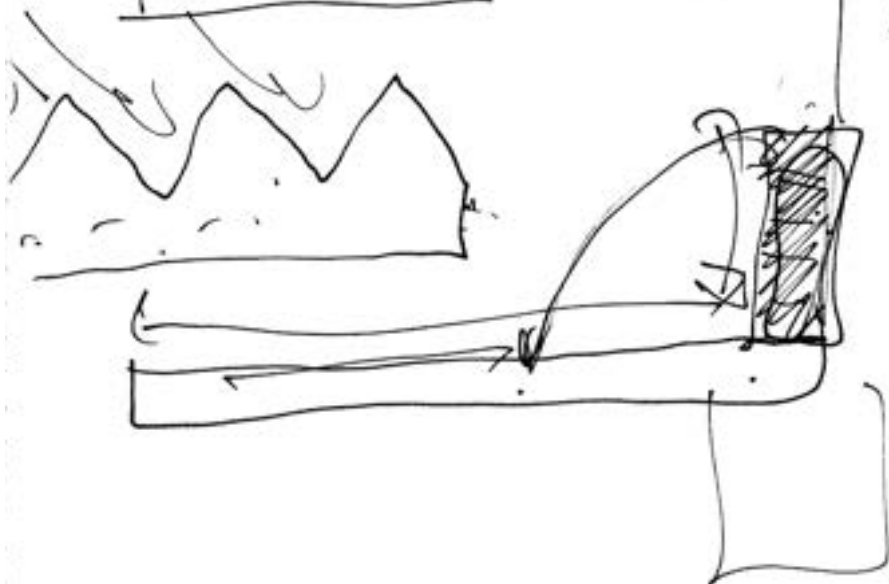


Half → Empty stone

→ Passage : porto-plot.



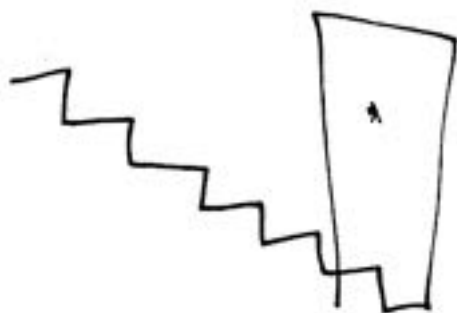
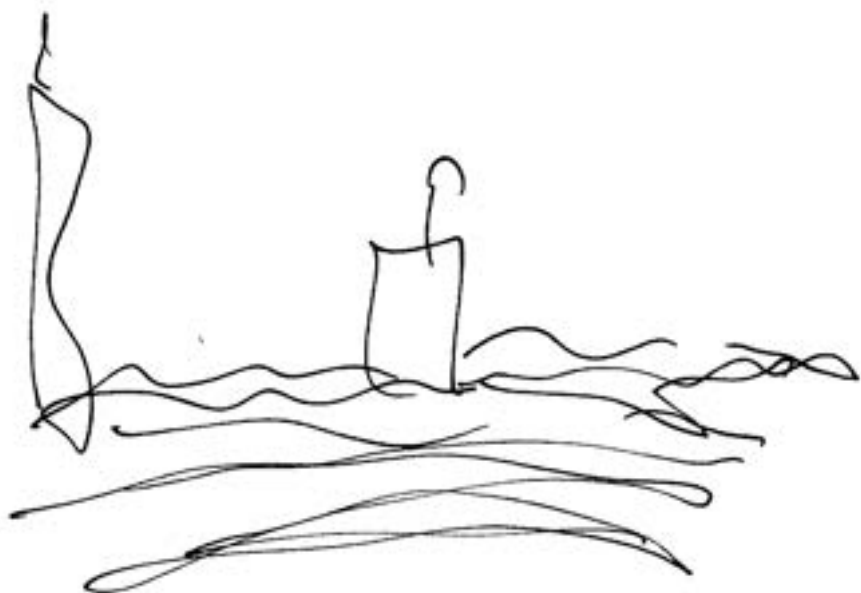
porto. dead. end

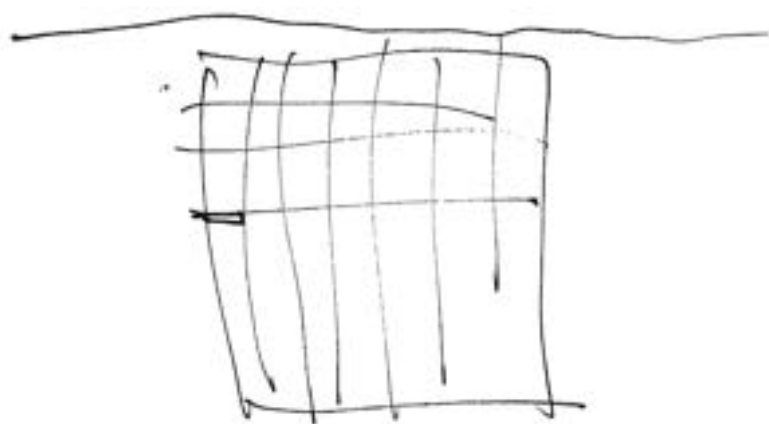
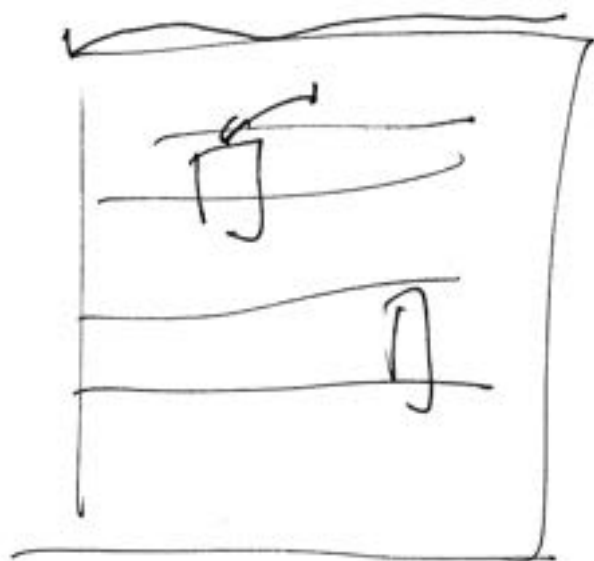


Conjuncture



no
structural economy

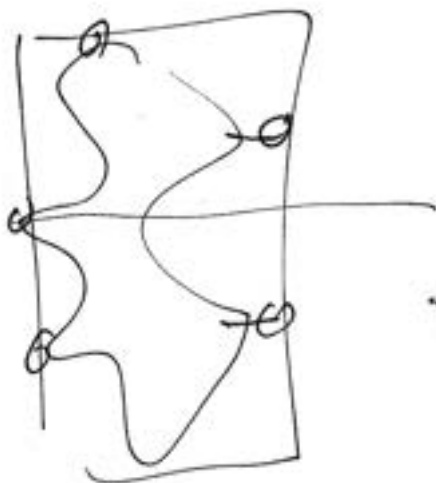


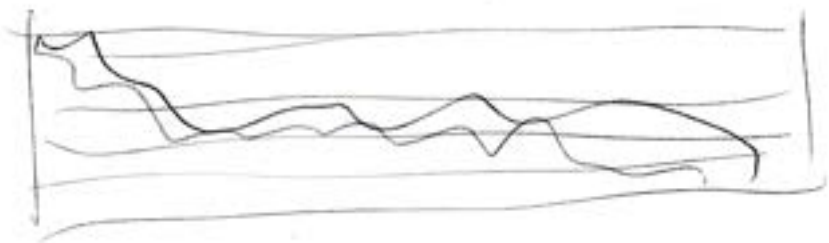


Refro. system.

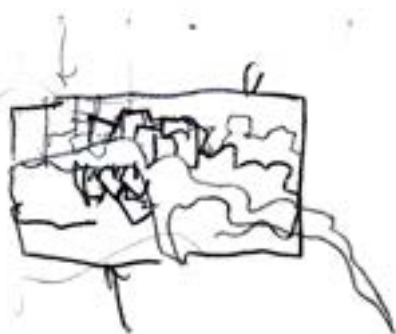


Identical elements
module. vs. context.

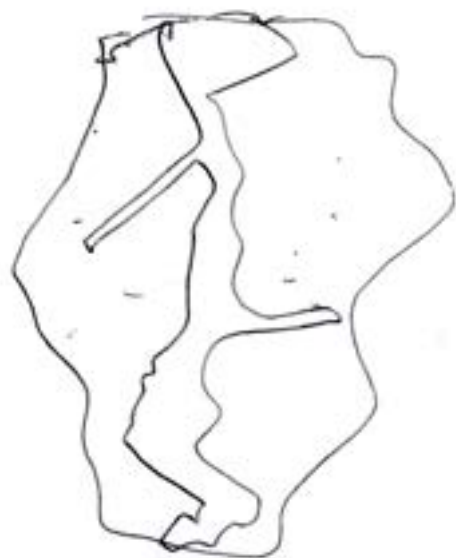


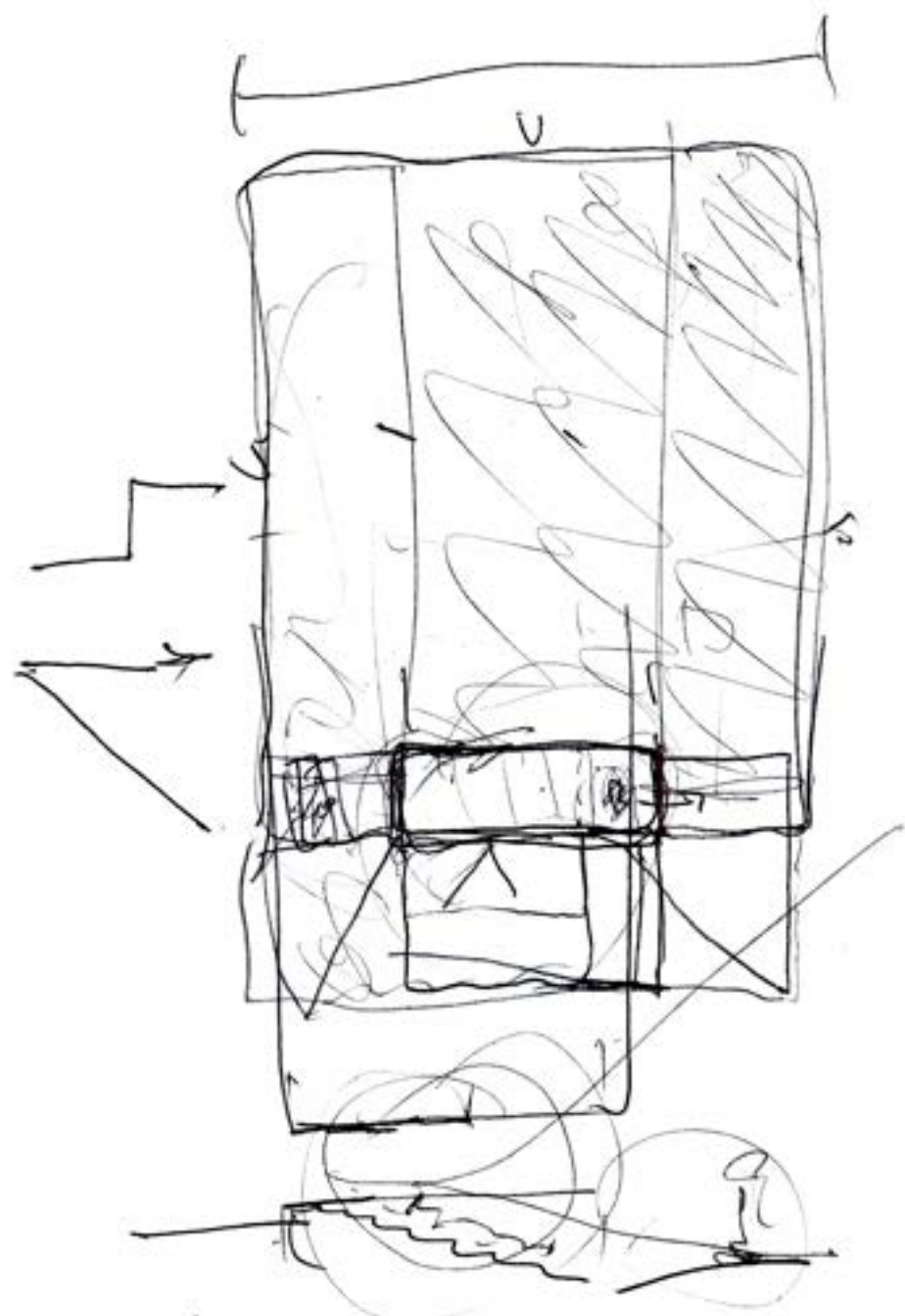


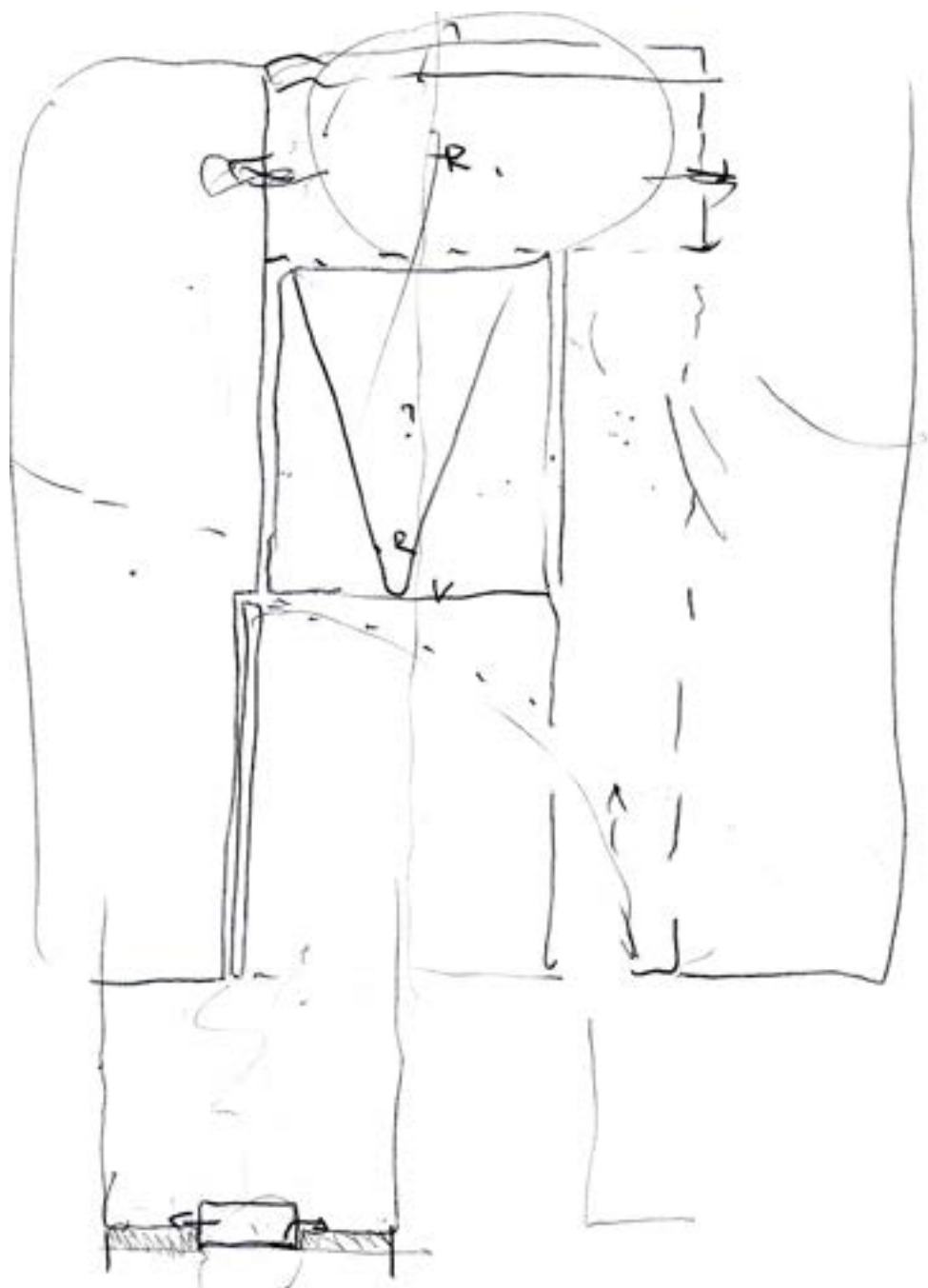
Security induced personality

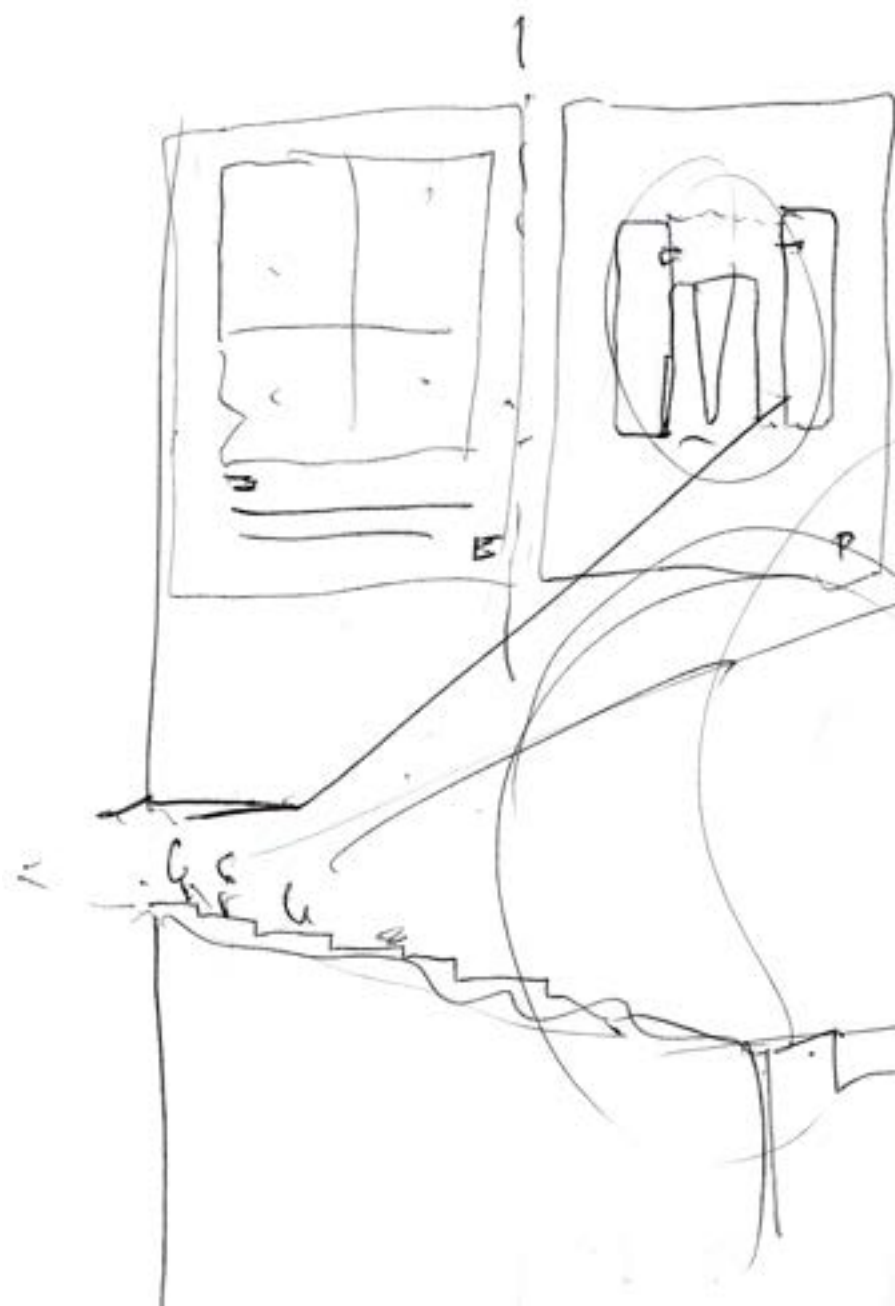


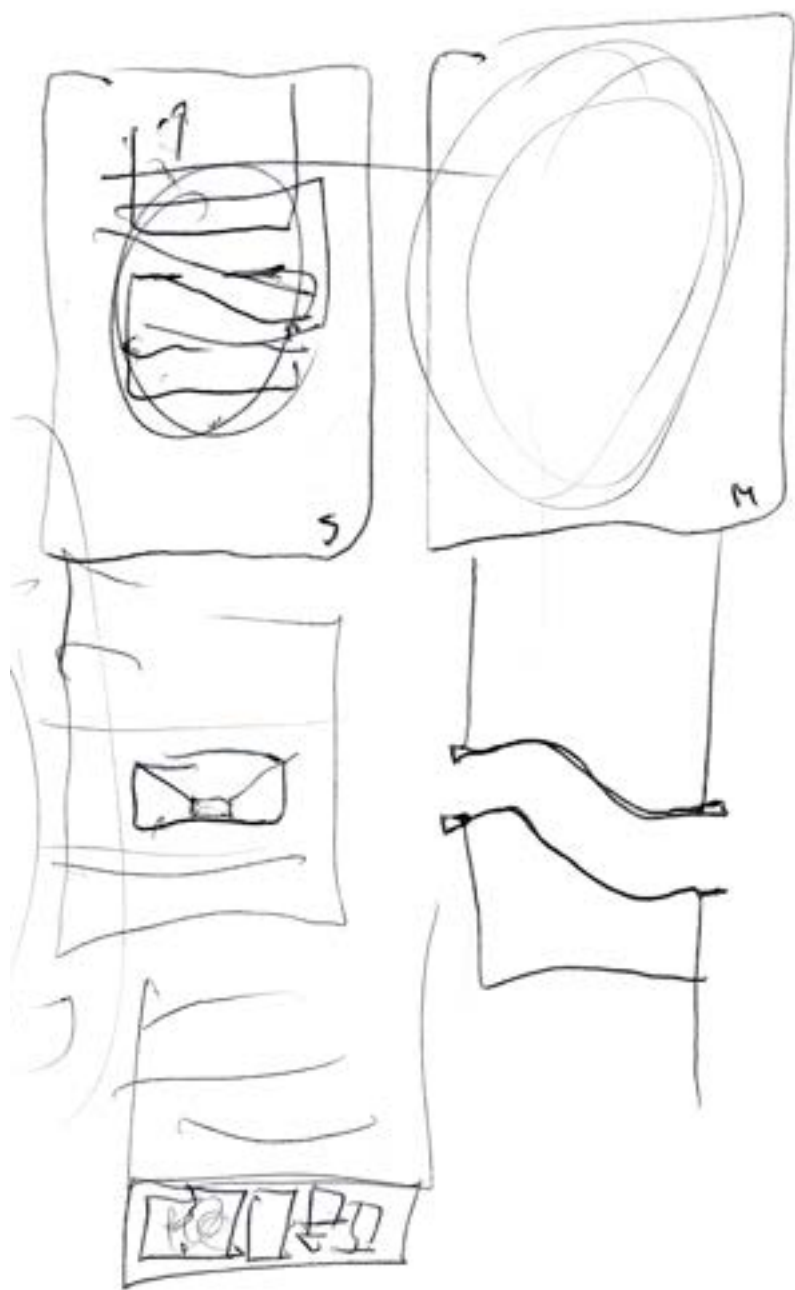


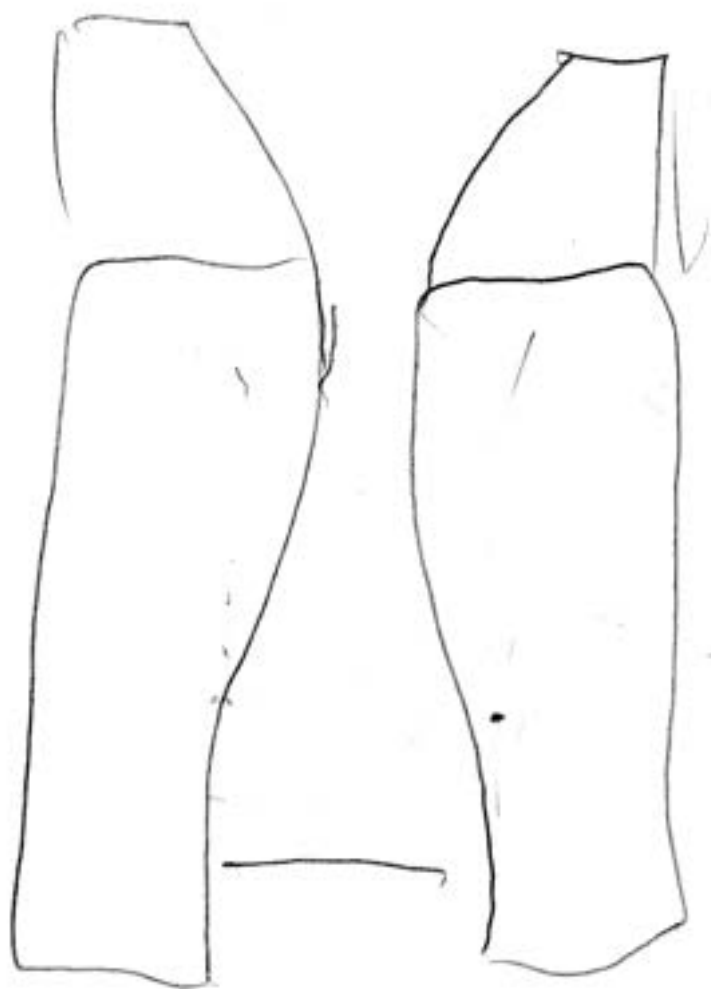


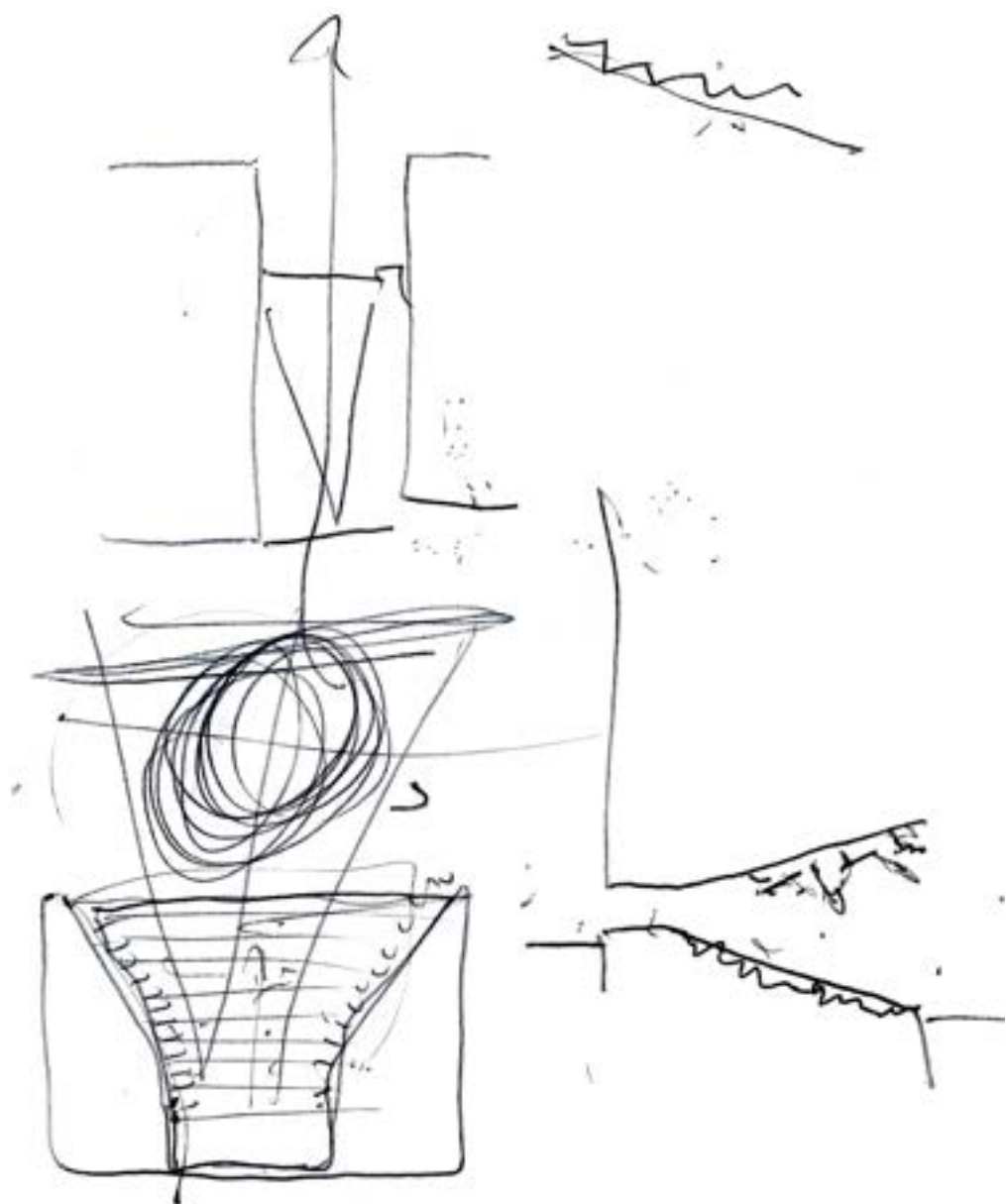




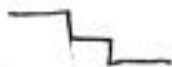
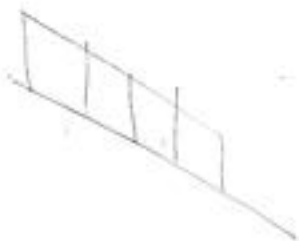
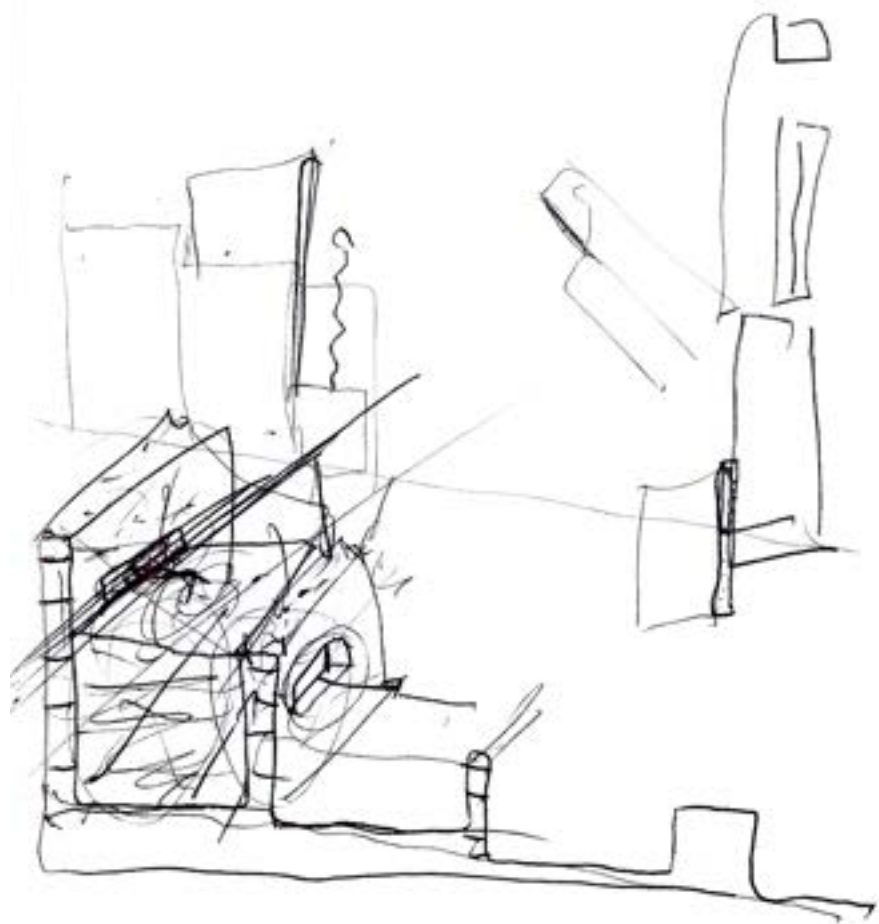


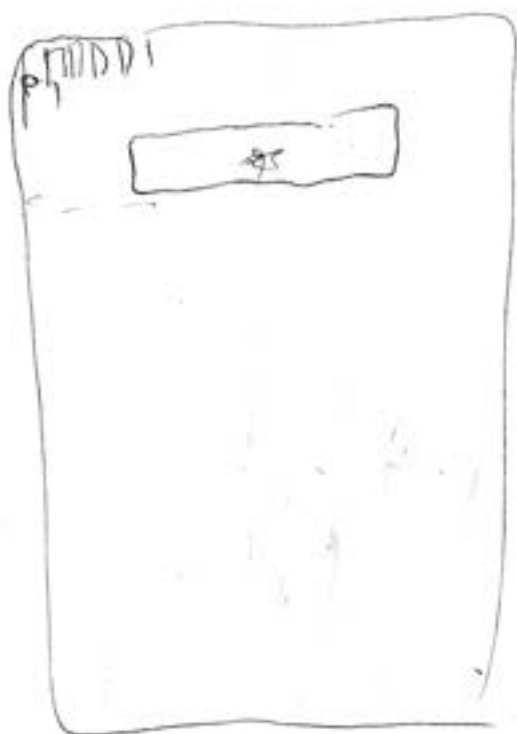
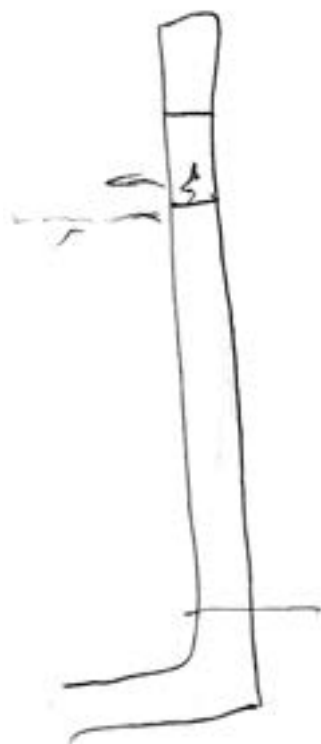


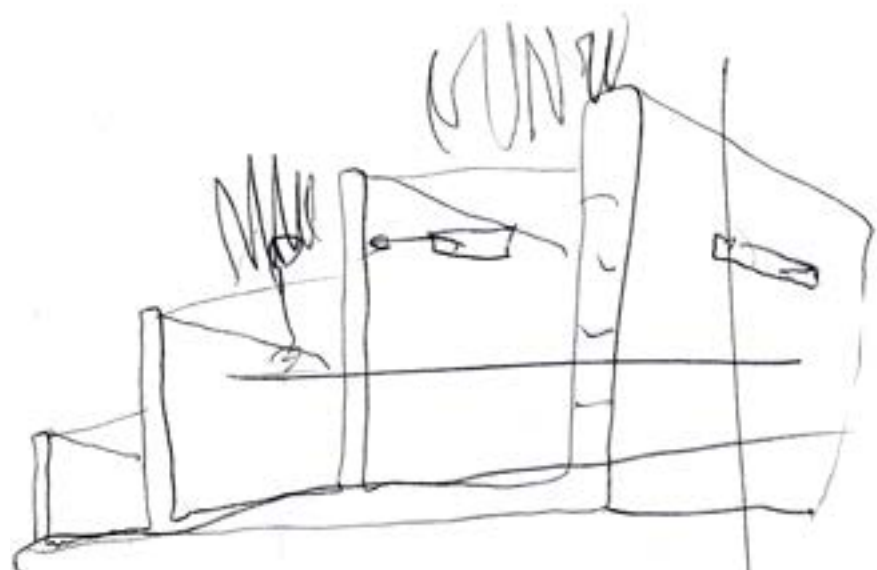












tela asfáltica

