

JUNE14

PORTO ACADEMY
FAUP

2018
20–27 JULY



June14 Meyer-Grohbrügge & Chermayeff

We are getting into the *body, architecture and program.*

The work is about the space that we physically occupy.

We want to make architecture, as opposed to art, which means that our project is about program, what we do. It is important that it is useful. It is about how people live. There is some kind of difference between programming a room and programing life. Blurring that is like blurring any kind of boundary. There is no space definition. A toaster works in big space and in small space. It fits differences in life because it is a character. It is something that you speak with. It speaks to you, you speak with it; together you understand yourselves.

We think that we are making '*bodies.*'

Sometimes these are bodies that can connect more than one person. (tables, beds and so on.)

These bodies somehow became families. Families of things that get in a dialogue with you and you them and them each other. Also, they make spaces and change the / a room. You are in dance with them. Not like a waltz. More that they are in the space with you so they are acknowledged regardless. (They acknowledge each other too.)

They can also speak to each in the world, we hope.





'Store of Trial Sewn Pieces', since 1969 — Franz Erhard Walther.





'Kitchen Set' — June 14 Meyer-Grohbrügge & Chermayeff.





'seat pink/red', 2011 — muller van severen.

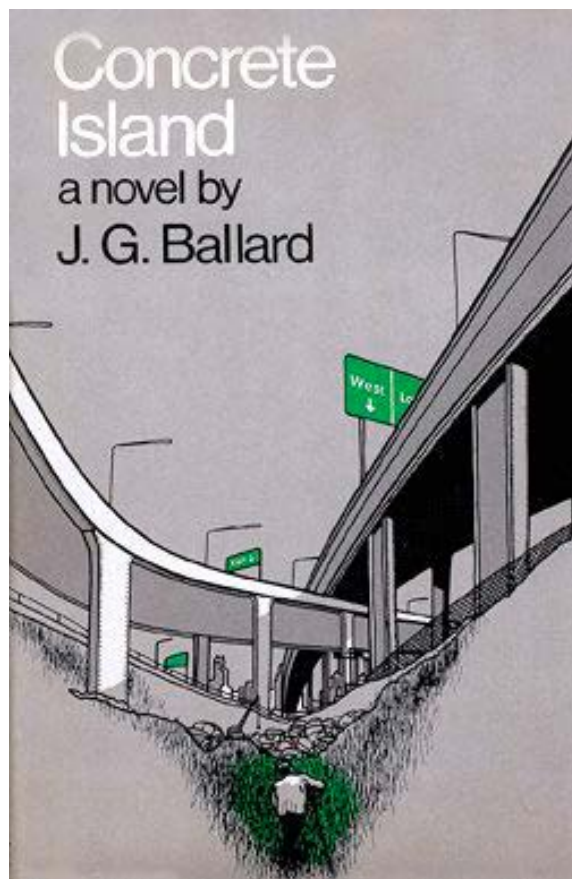




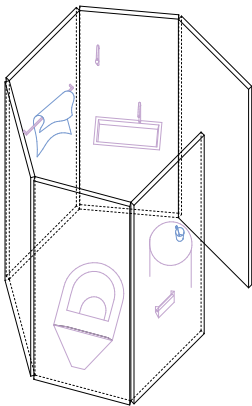
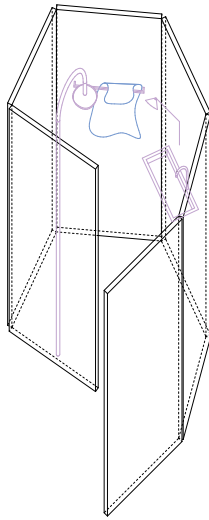
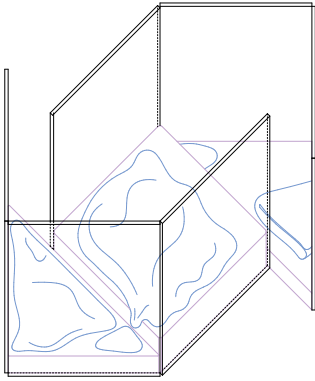
'Weekend House in Merchtem', 2009-2012 — Office KGDVS.

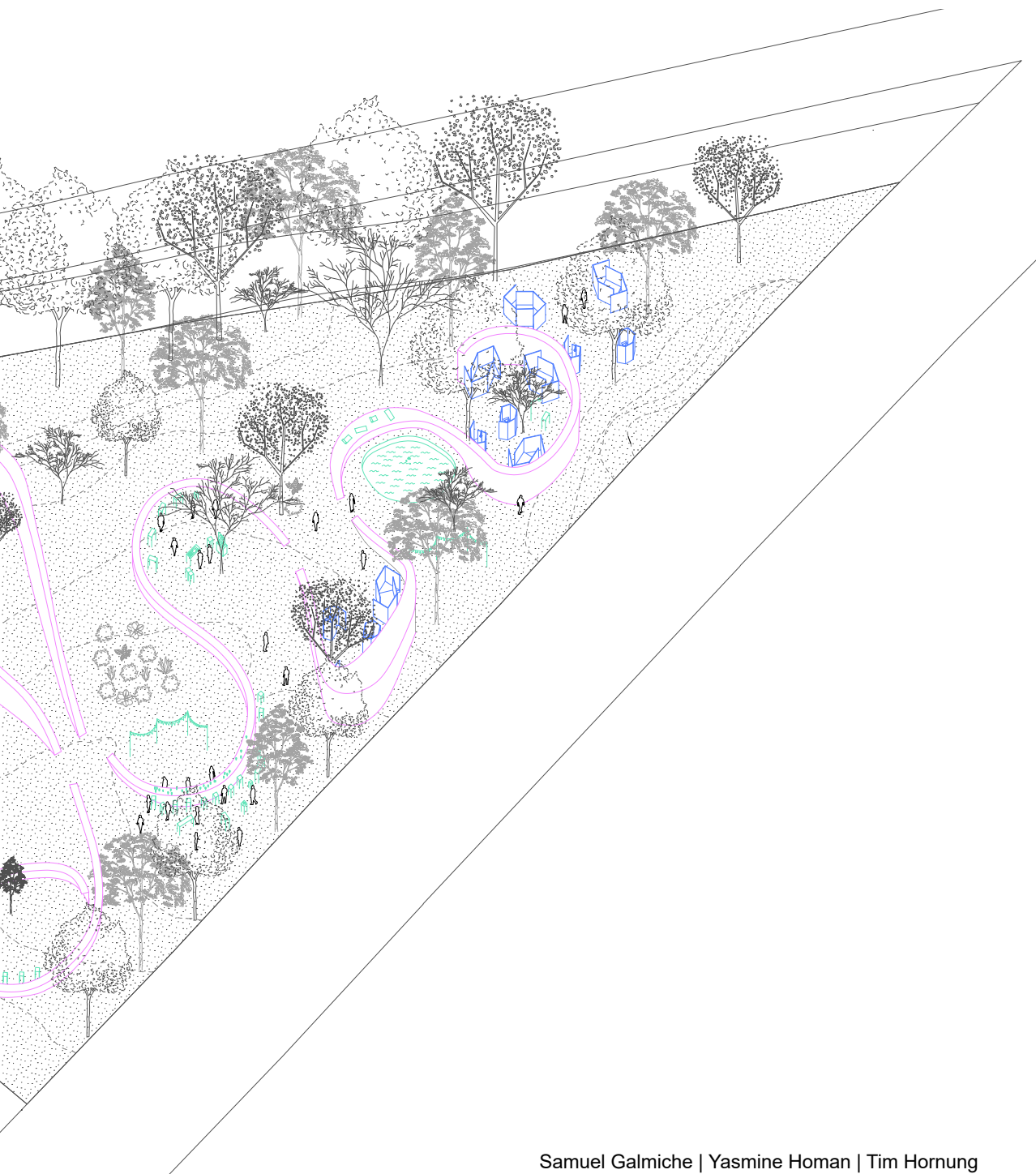
Concrete Island

a novel by
J. G. Ballard

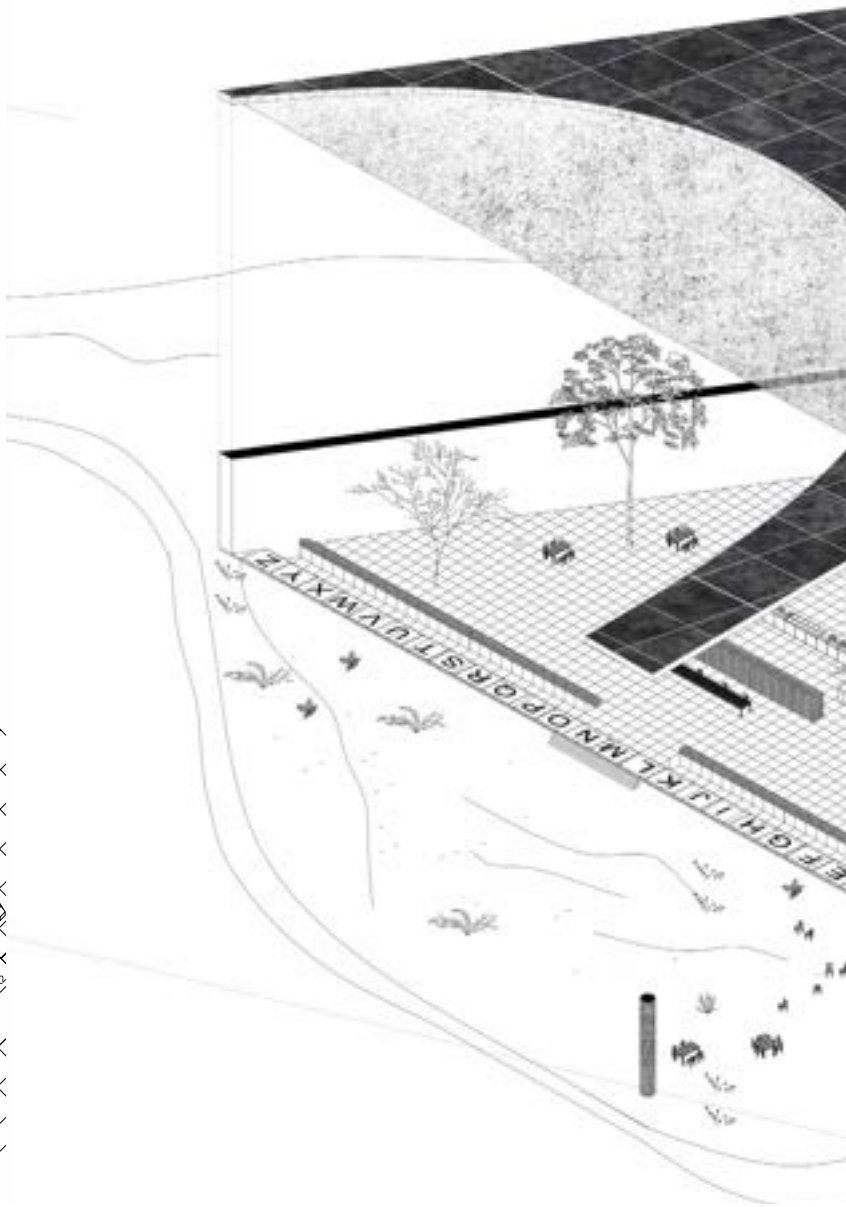
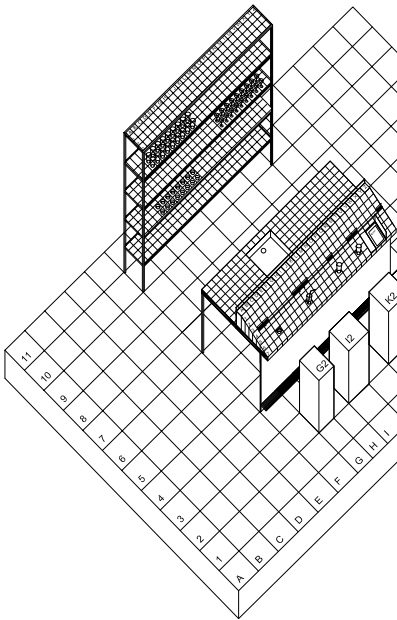


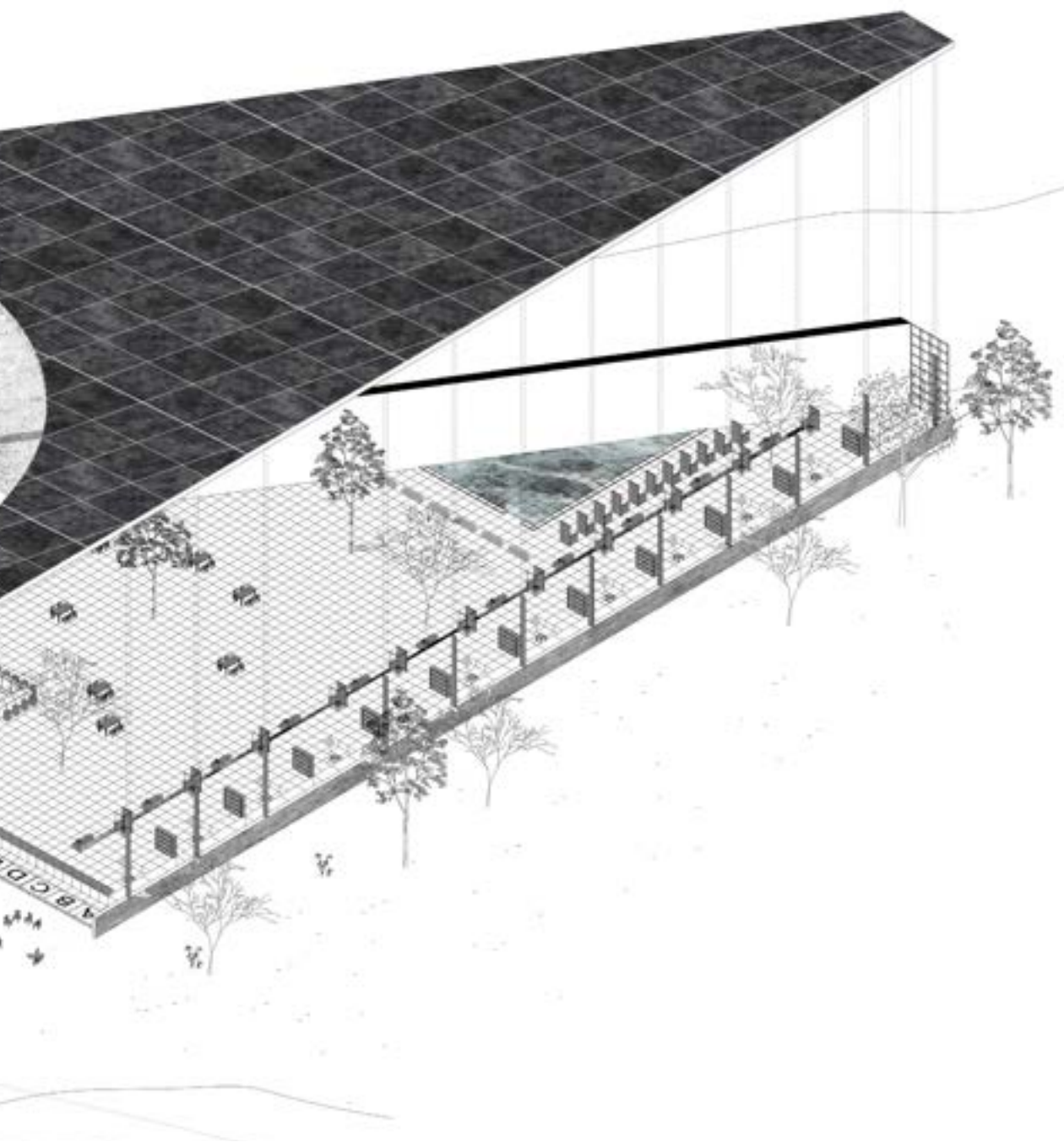




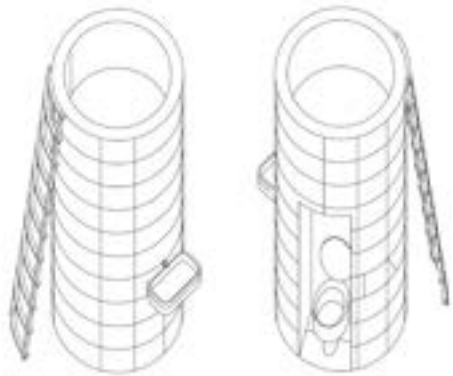
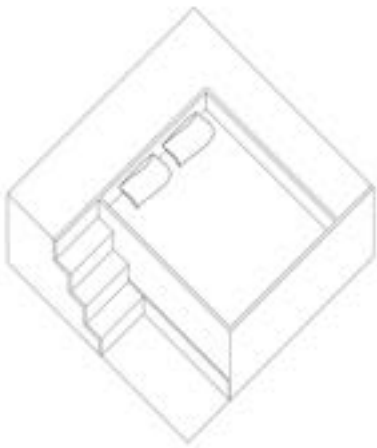
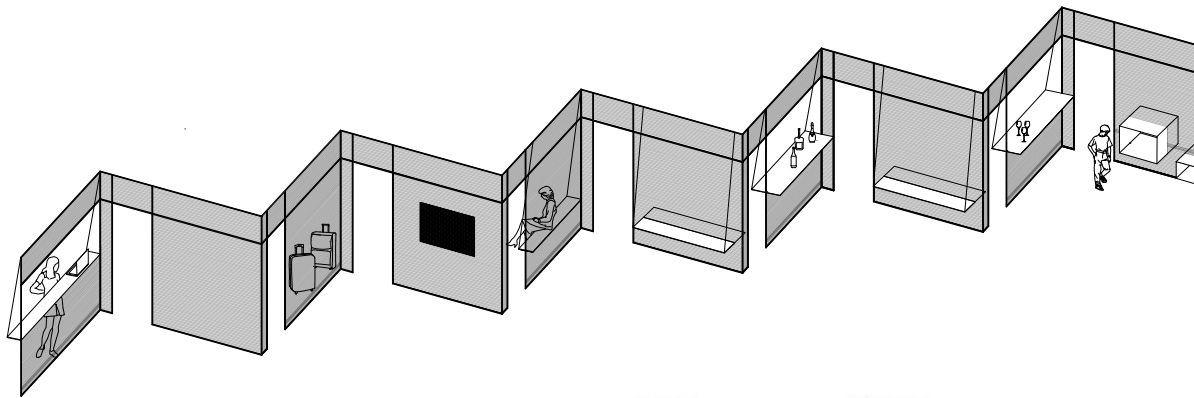


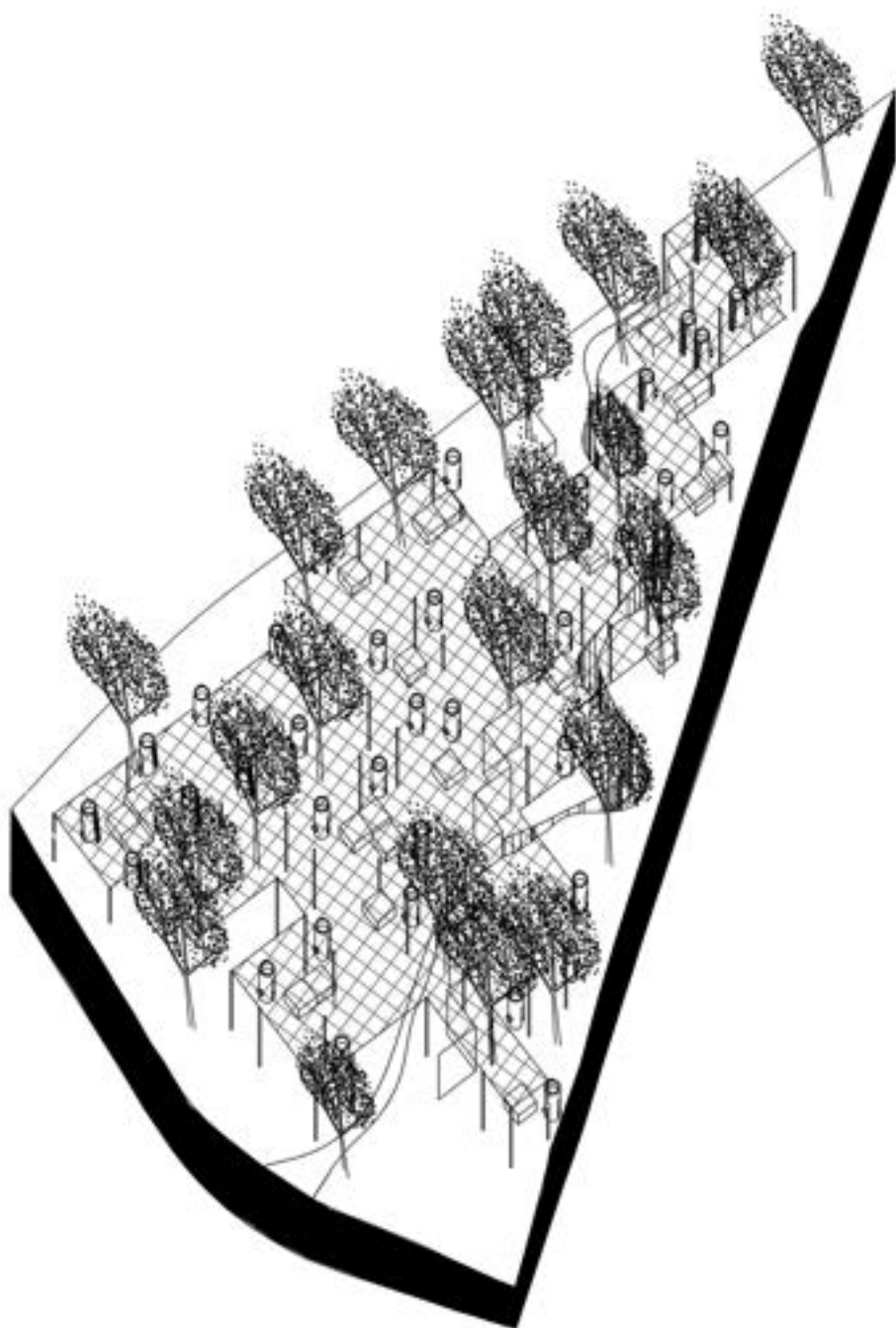
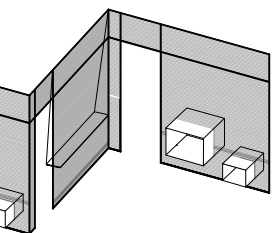
Samuel Galmiche | Yasmine Homan | Tim Hornung

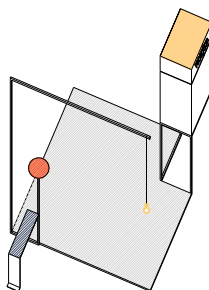
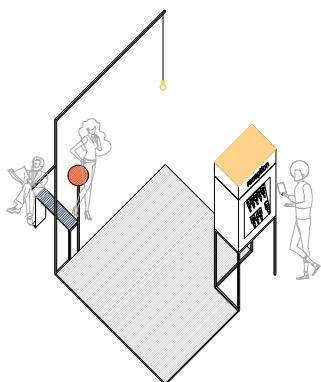
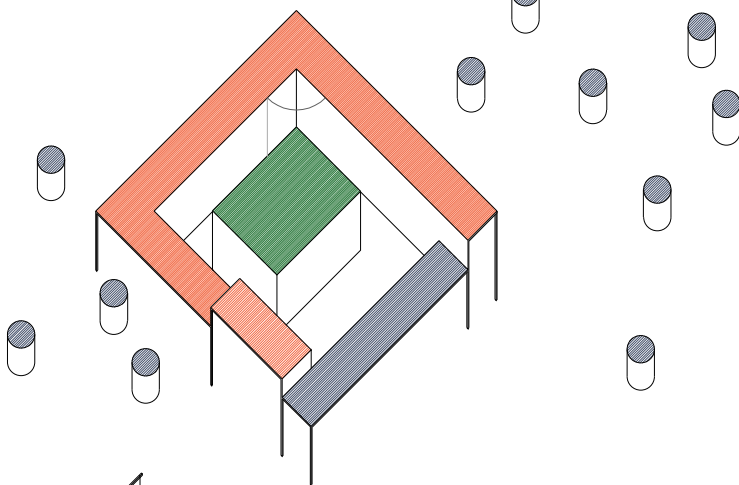
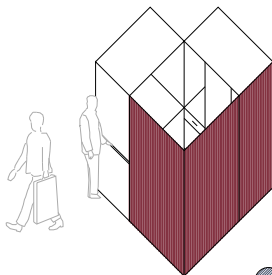
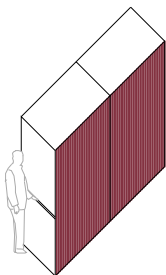
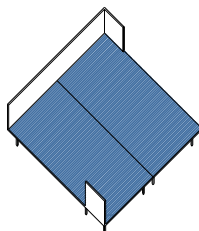
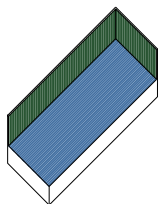
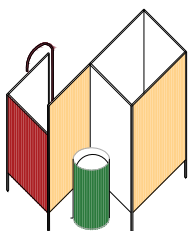


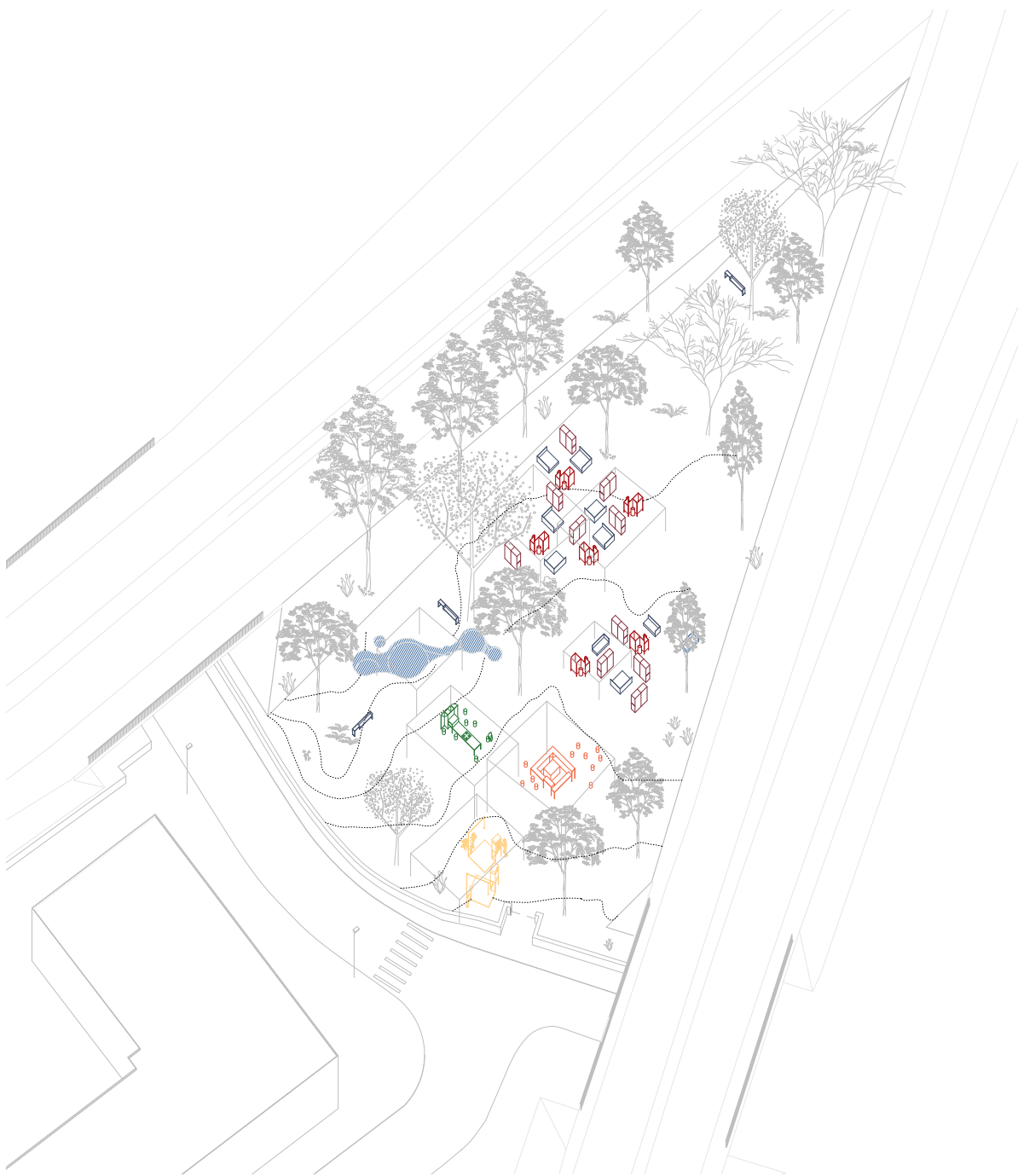


Shervin Sheikrezaei

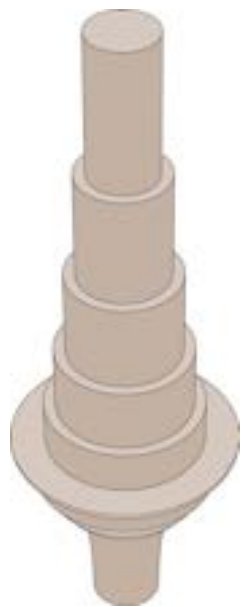
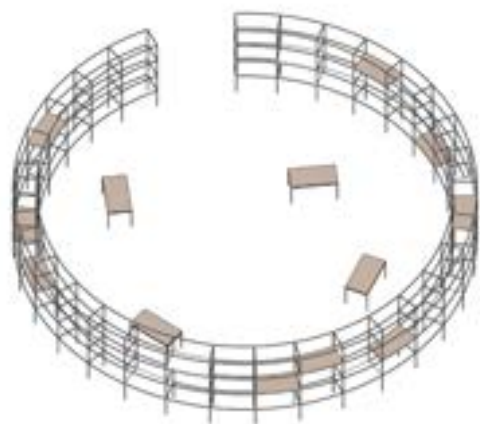
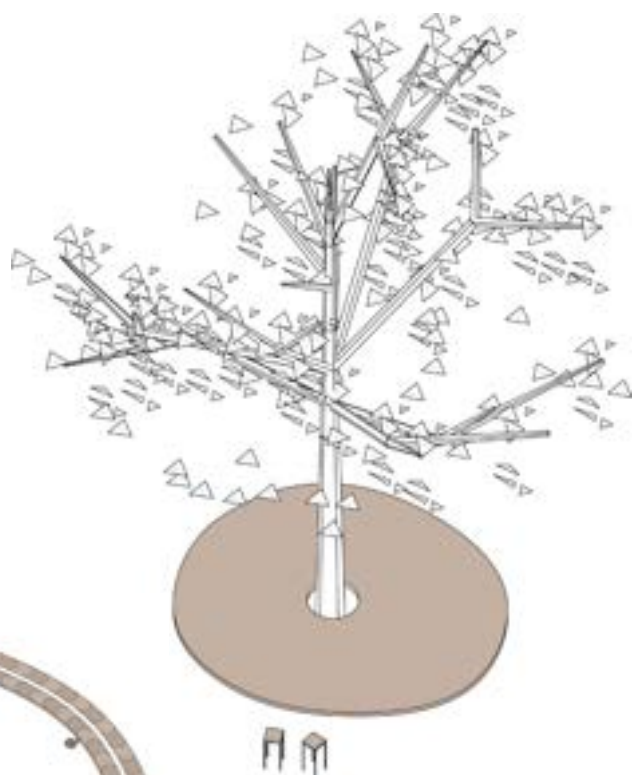
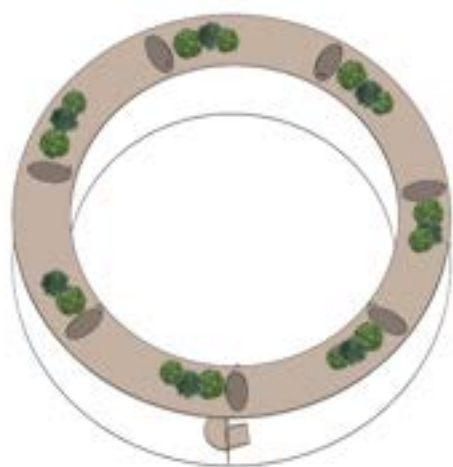


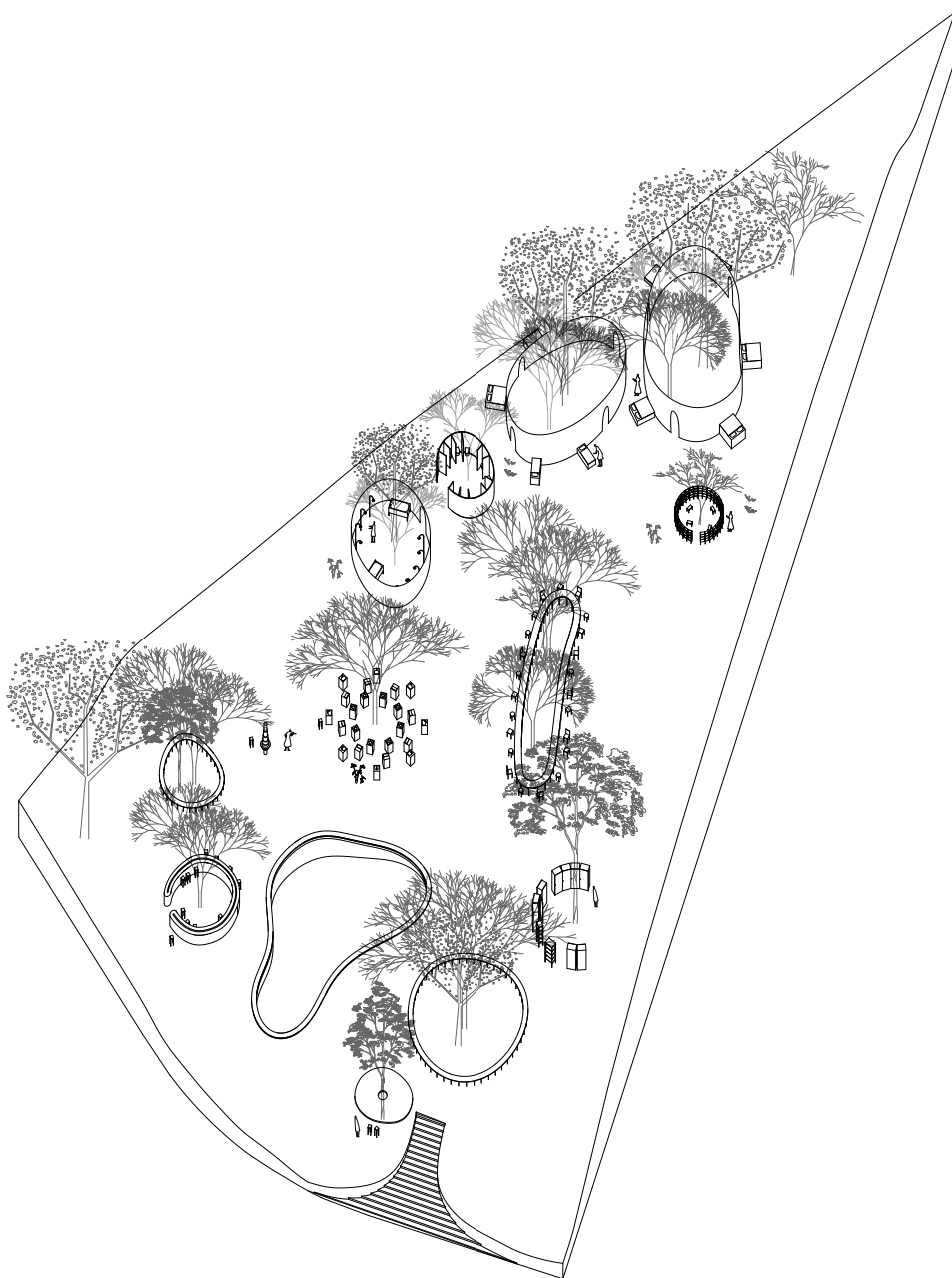






Maria Borja ! Mariana Ligeiro ! Pascal Feck





Debora Berardi | Maria Ines Duarte | Susanna Smailova

JUNE14

MEYER-GROHBRÜGGE & CHERMAYEFF

DEBORA BERARDI
HANSEUL JU
JOHANNA MEYER-GROHBRÜGGE
MARIA BORJA
MARIA INÊS DUARTE
MARIANA LIGEIRO
PASCAL FECK
RICARDO LEITÃO
SAM CHERMAYEFF
SAMUEL GALMICHE
SHERVIN SHEIKREZAEI
SOFIA IATROU
SUSANNA SMAILOVA
TIM HORNUNG
VERÓNICA PINTO
YASMINE HOMAN

Organization & Production



Co-Organization



Sponsor



Partners



Support

