

# RAAMWERK

PORTO ACADEMY  
FAUP

2019  
19–26 JULY



“Architecture is too important to leave exclusively to architects.

The architect must alert the client to the importance of this, not because of the so-called functional programme, but because of the will of the commissioner to leave traces for the future. A building is the expression of a mental image and the mediation during a passage to which it grants brilliance. Architecture is not functional, it is elementary.

A building is a possibility, is conducive, preferably taciturn, silent, is willing, liberates space, mediates. Building as intelligent ruins. Suitable for use, fit for purpose, as Charles Voysey expressed it.”

(fragment from: bOb Van Reeth, Good architecture, Oase 90)

# INDEX

05	Brief
06	Plans index
10	Model Sofie Emilie Bole/ Shuning Zhu
12	Model Shuning Zhu/ Klara Hallberg
14	Model Klara Hallberg/ Johannes Lassen Platz
16	Model Johannes Lassen Platz/ Mariana Pires Ricachinevsky
18	Model Mariana Pires Ricachinevsky/ Salome Schepers
20	Model Salome Schepers/ Laurids Bager
22	Model Laurids Bager/ Ethan Loo
24	Model Ethan Loo/ Sofie Emile Bole Ksaer
26	Model Harald Forsmark/ Antonia Pielmeier
28	Model Antonia Pielmeier/ Joana Ceja
30	Model Joana Ceja/ Riccardo Barelli
32	Model Riccardo Barelli/ Oskar Madro
34	Model Oskar Madro/ Sabine Fremiot
36	Model Sabine Fremiot/ Frederico Barbose
38	Model Frederico Barbose/ Bas Leemans
40	Model Bas Leemans/ Léo Berastegui
42	Model Léo Berastegui/ Harald Forsmark
44	Model Juliana Gori/ Pablo Mauleòn Toniolo
46	Model Pablo Mauleòn Toniolo/ Juliana Gorix

# UNAUTHORIZED SPACE

The aim of the studio is to experiment with space. Architecture without direct context or clear authorship. The studio is about this space that is evolving, about the debate and the process.

A pavilion is designed as the spatial analysis of an artwork.

The pavilion is designed from the inside, in which the exterior is only a by-product.

The pavilion is without direct context, the artwork is the context.

The pavilion is designed without construction details or materiality.

The pavilion is only space.

A cardboard model on scale 1/20 is the result of this phase.

At the end of phase 1, all models are collected and become common good.

The 2nd phase of the studio is building on the pavilion resulting from the 1st phase.

However, the program of the pavilion will no longer be the specific piece of art. We are projecting a banal program within the specific architecture of the pavilion, the house for a concierge.

Maybe, this approach is resulting in a banal complexity.

The students will not continue working on the pavilion they designed in the first phase. The students are assigned a model designed by another student.

The authorship is no longer relevant.

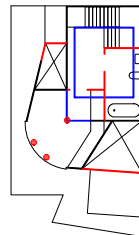
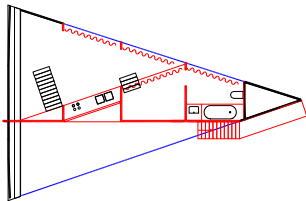
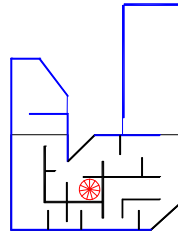
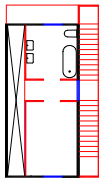
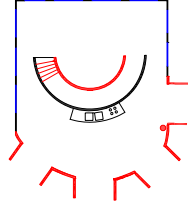
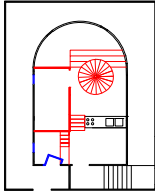
The model is treated as given object, an existing structure. The model is documented in plan, section, facade... A rational interpretation of the initial work of the other student.

The analysis of an analysis.

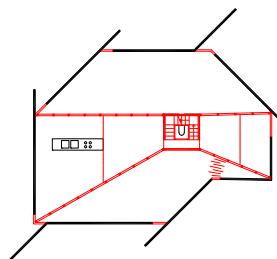
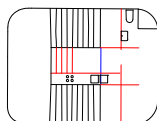
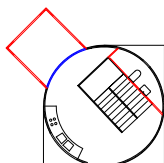
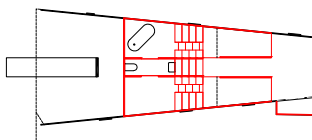
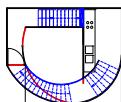
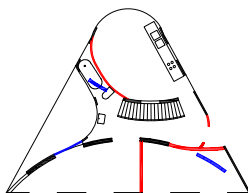
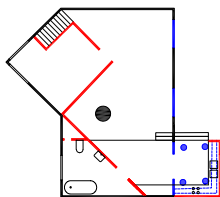
The intervention can vary from a minimal addition to a radical demolition. Students are free to decide if they want to discuss this intervention with the other student or if they prefer to ignore the authorship.

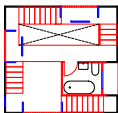
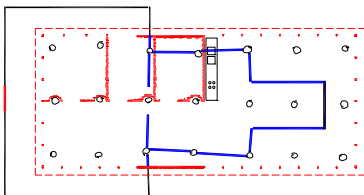
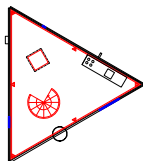
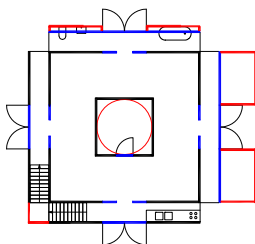
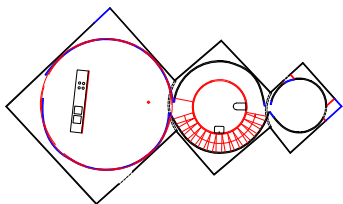
The interventions are affecting the initial model. All new structure in the model is made within the same brown cardboard as the 1st phase. There is no distinction between the 1st phase and the 2nd phase.

In the end, it is not clear which decision is linked to the specific program or either to the banal program.



RAAMWERK





RAAMWERK







RAAMWERK

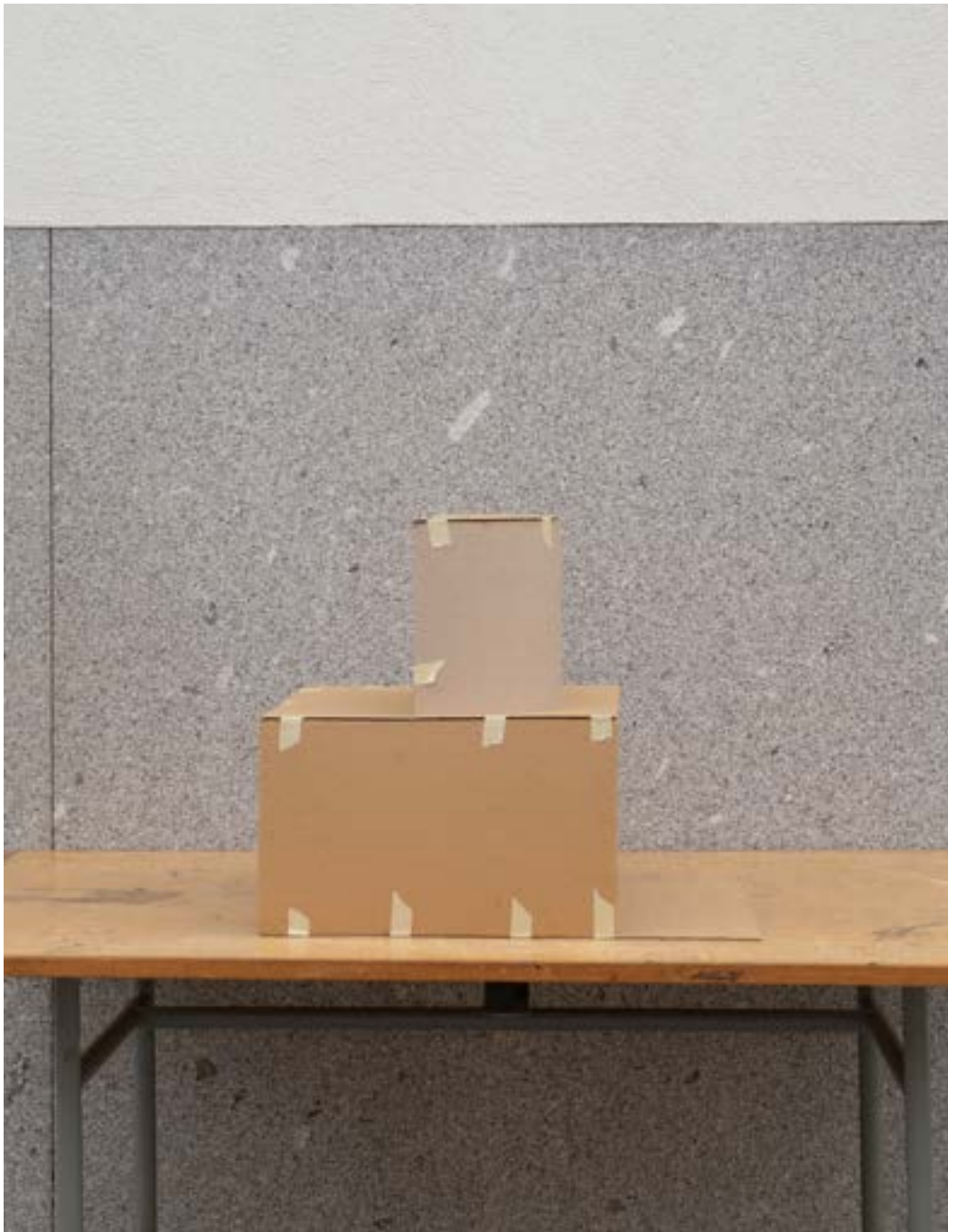




RAAMWERK

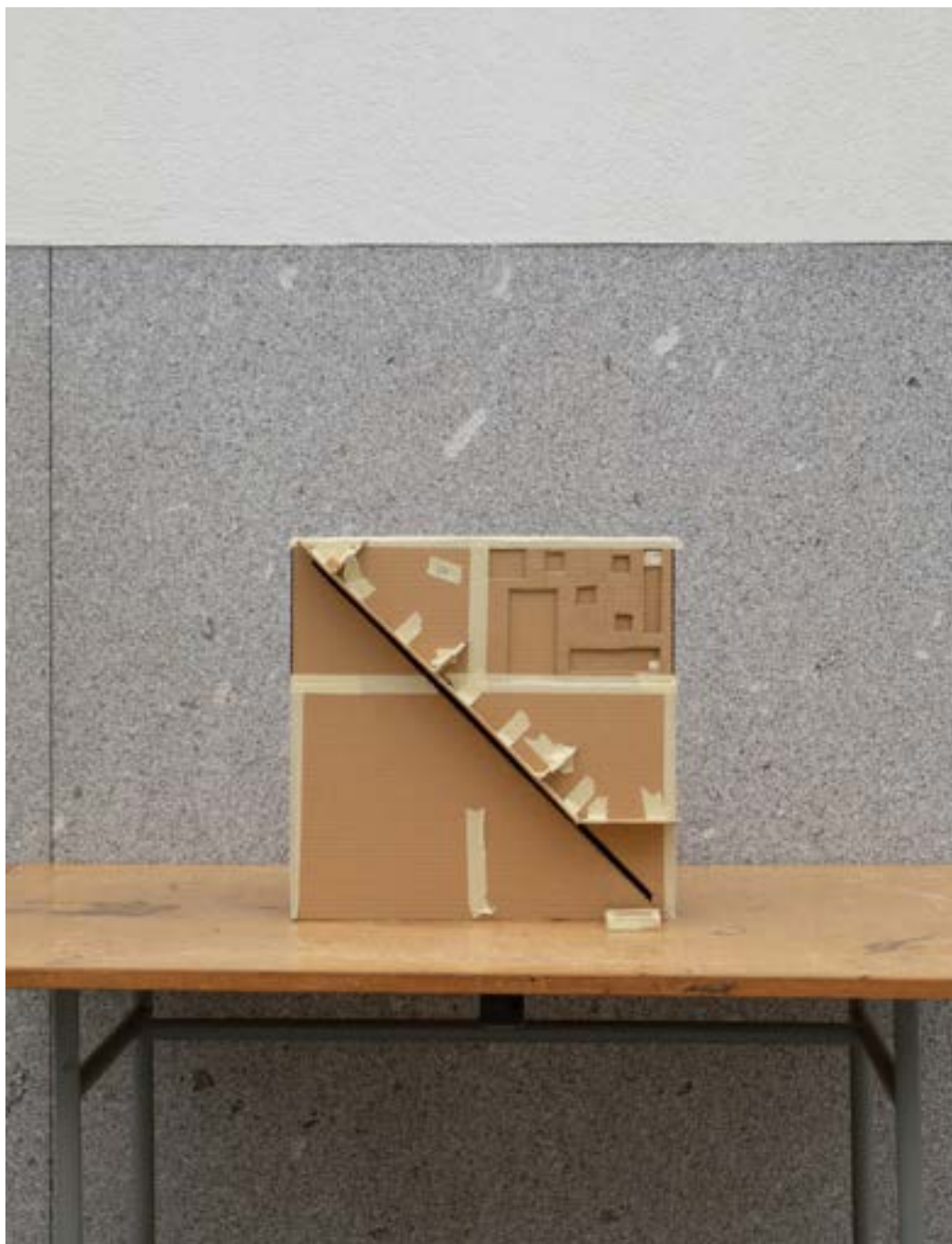






RAAMWERK





RAAMWERK







RAAMWERK





RAAMWERK







RAAMWERK

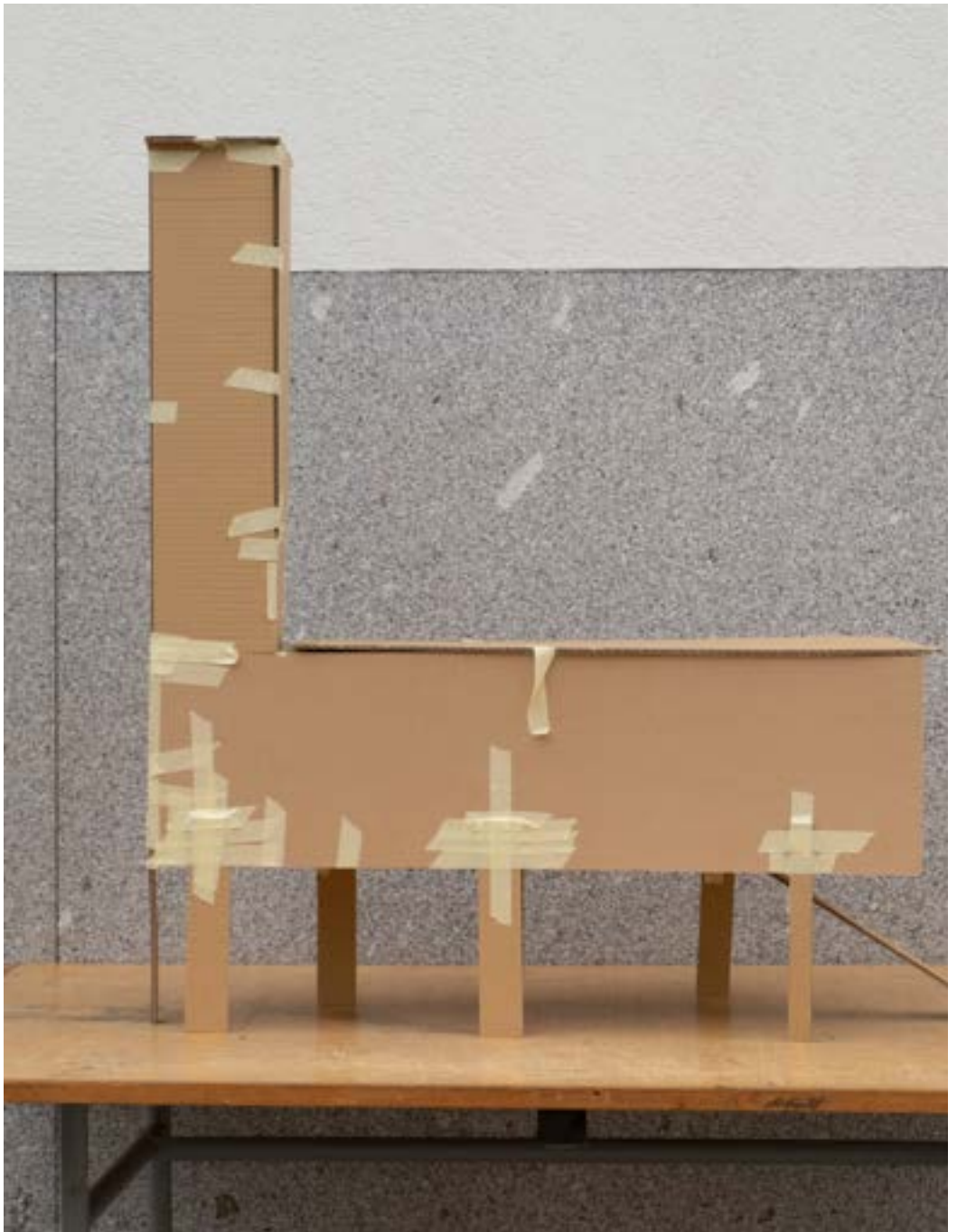




RAAMWERK

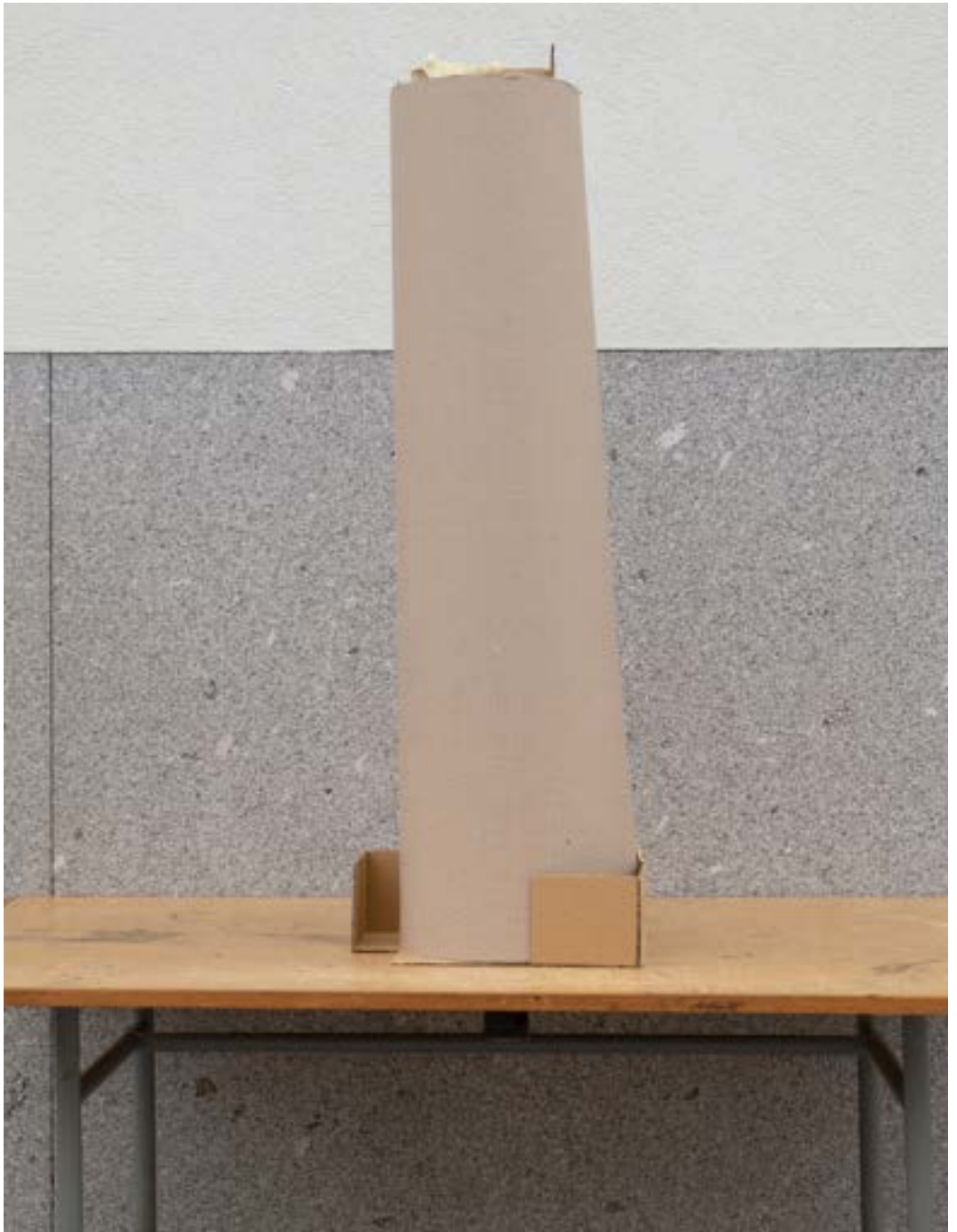






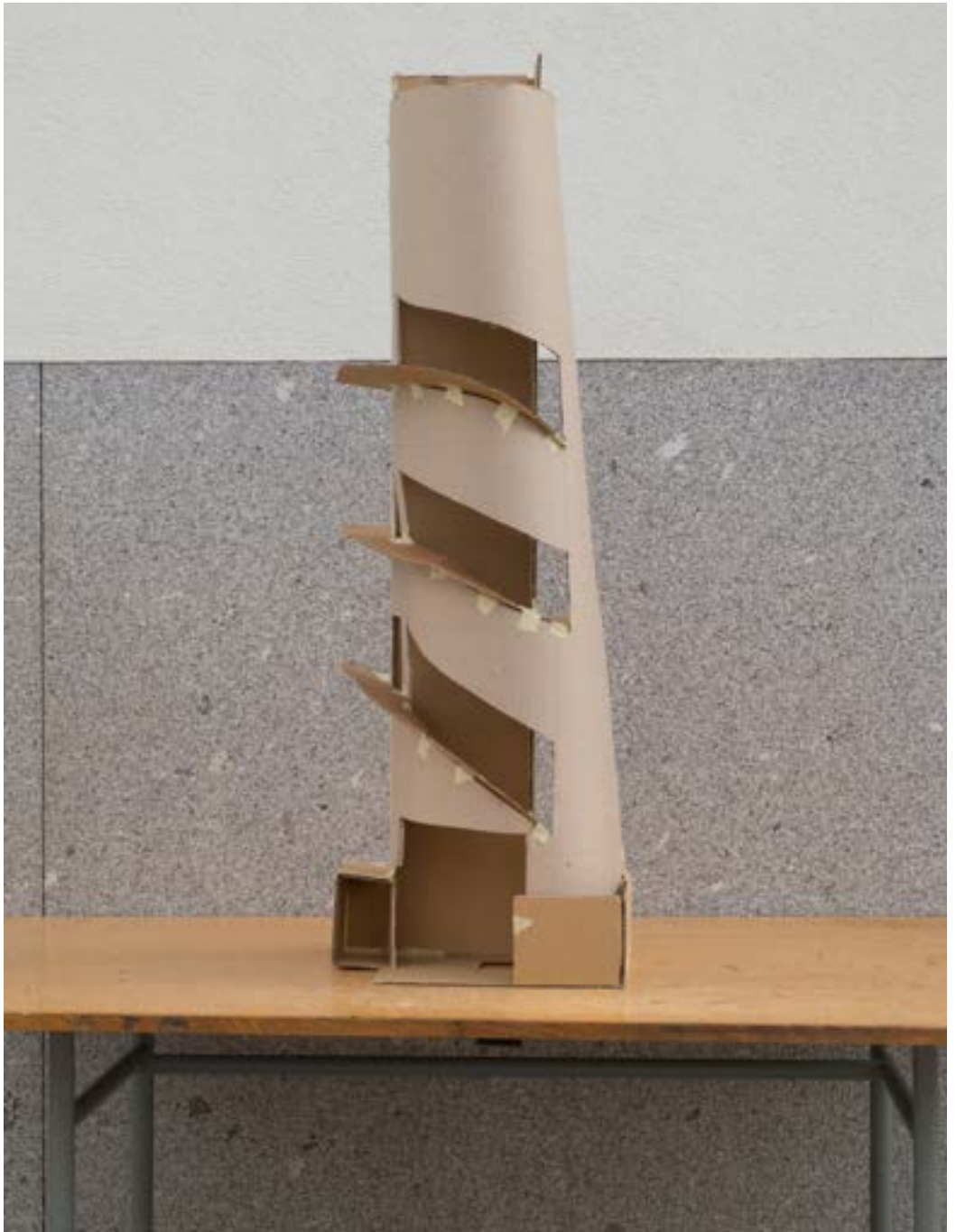
RAAMWERK





RAAMWERK







RAAMWERK





RAAMWERK







RAAMWERK





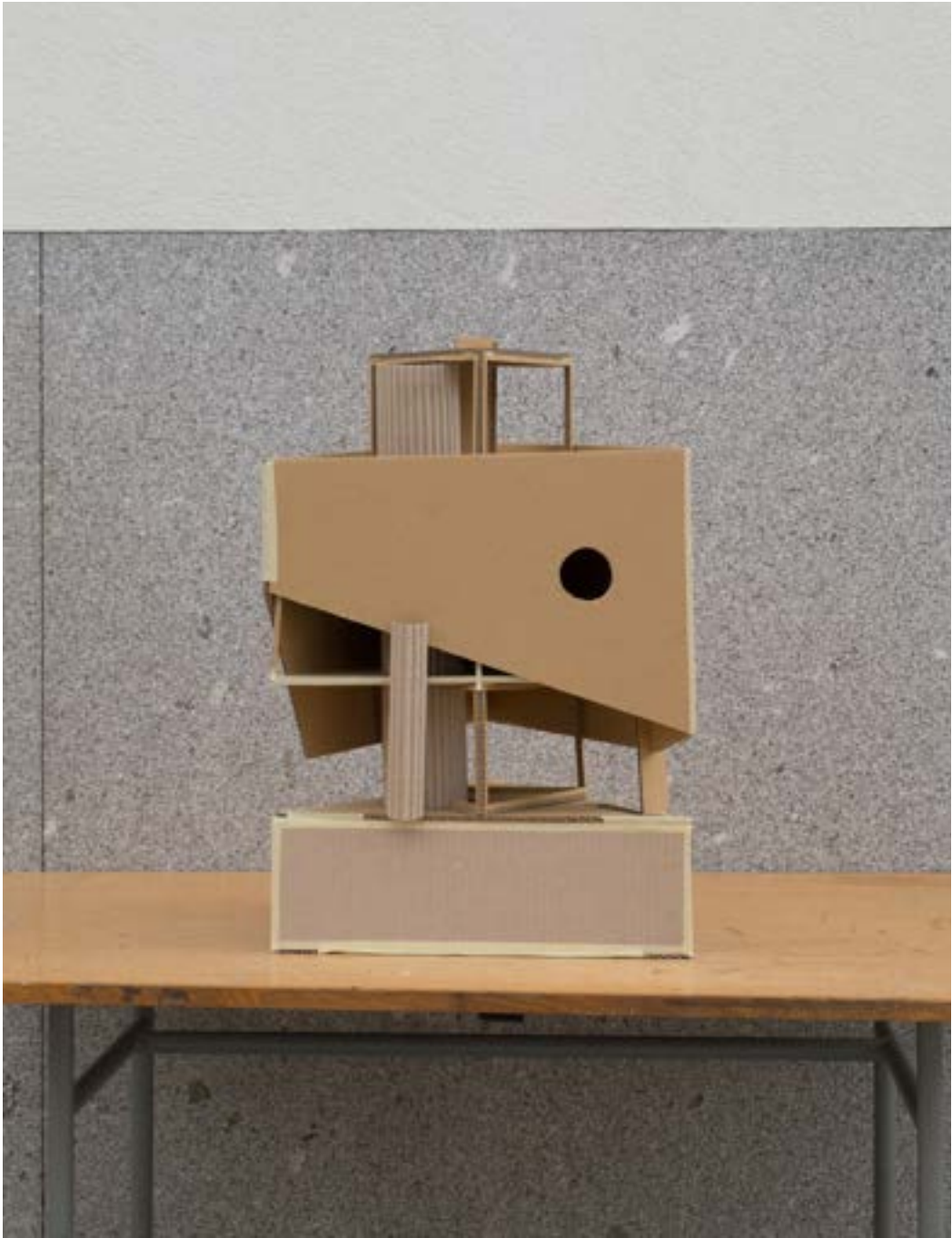
RAAMWERK







RAAMWERK





RAAMWERK







RAAMWERK





RAAMWERK







RAAMWERK











RAAMWERK

# RAAMWERK

ANTONIA PIELMEIER  
BAS LEEMANS  
ETHAN LOO  
FREDERICO BARBOSA  
FREEK DENDOOVEN  
GIJS DE COCK  
HARALD FORSMARK  
JOANA CEIA  
JOHANNES LASSEN PLATZ  
JULIANA KHOURY GORI  
KLARA HALLBERG  
LAURIDS BAGER  
LEO BERASTEGUI  
MARIANA PIRES RICACHINEVSKY  
NUNO REIS PEREIRA  
OSKAR MADRO  
PABLO MAULÉON TONIOLO  
RICCARDO BARELLI  
SABINE FREMIOT  
SALOME SCHEPERS  
SHUNING ZHU  
SOFIE EMILIE BOYE KJAER

Organization & Production



Co-Organization



Sponsor



Partners



Support

